












## Cobalt Point, Millharbour, Canary Wharf, E14

Asking price **£415,000** | Leasehold

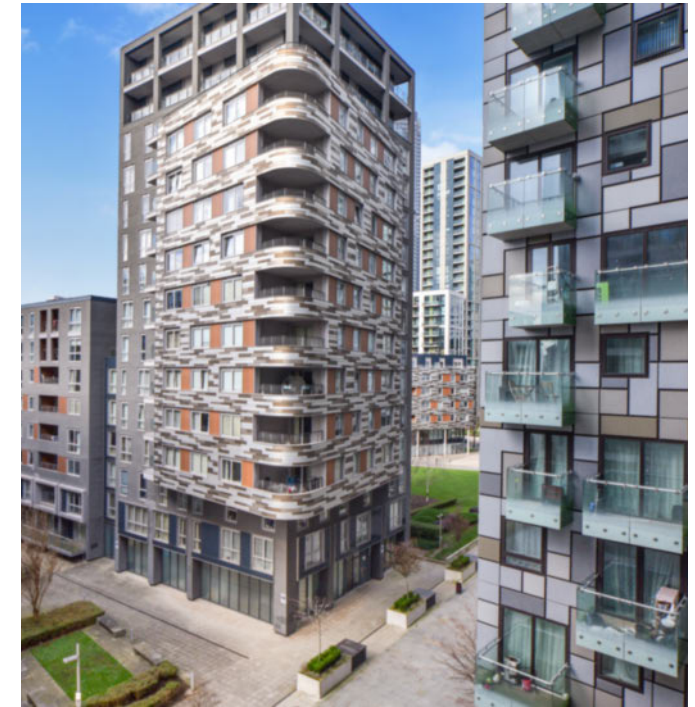


# Cobalt Point, Millharbour, Canary Wharf, E14

-  1 Bedroom
-  1 Bathroom
-  1 Reception
-  Balcony
-  Gym
-  24-Hour Concierge
-  Local Amenities
-  Parking
-  0.2 MI South Quay  
0.5 MI Canary Wharf

Spacious one bedroom apartment with a balcony and parking located in Cobalt Point, E14. Features include a living room with wood flooring, recessed spot lighting, a private balcony, an open plan kitchen, bedroom with integrated wardrobes and a family bathroom. Facilities include a gymnasium and a 24-hour concierge service. Situated close to Millwall Dock and the local shops and amenities of Millharbour and Canary Wharf.

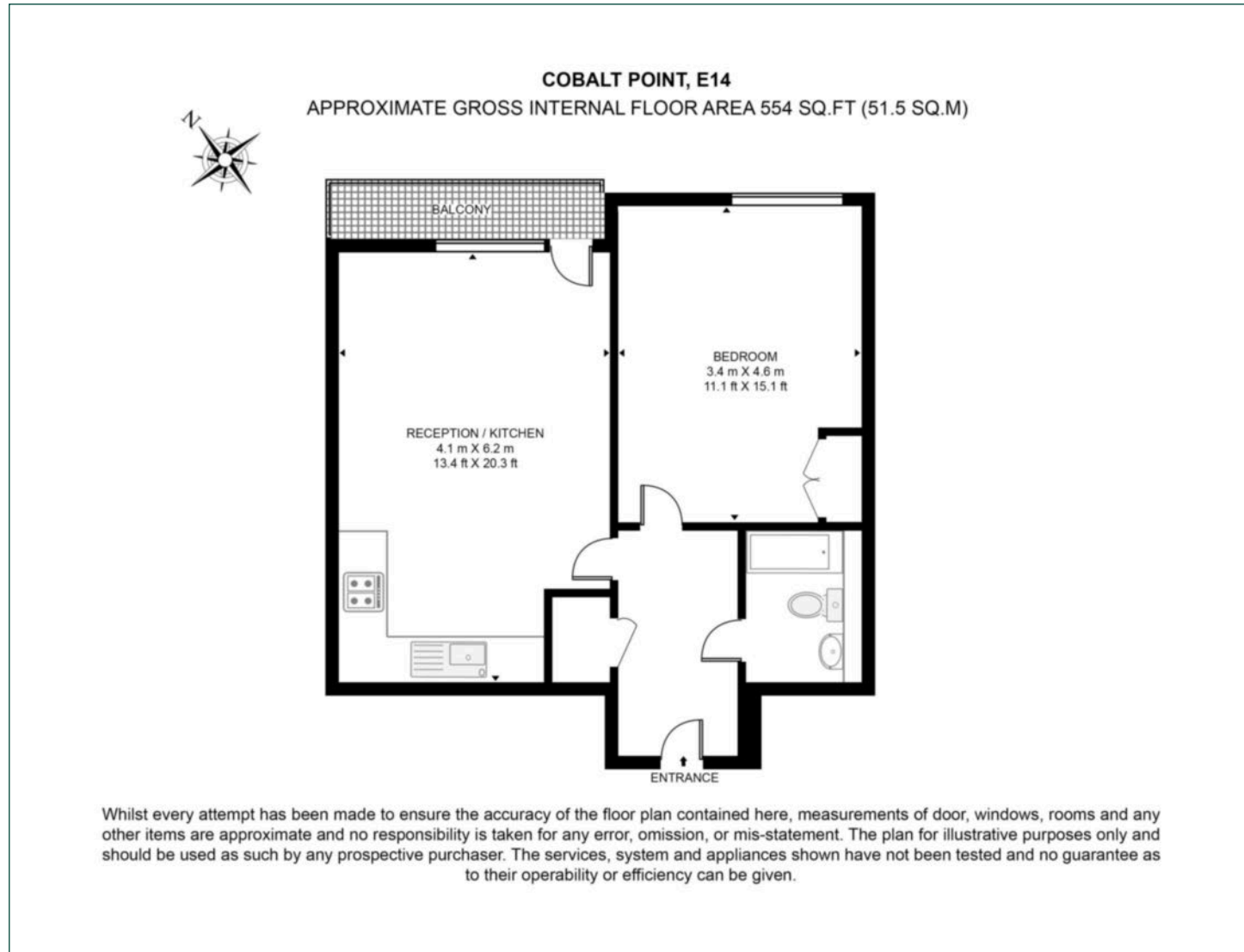
Only 0.2 miles from South Quay station and 0.5 miles from Canary Wharf underground station. Services currently include DLR, Jubilee and Elizabeth lines facilitating commutes to areas such as Bank, Tottenham Court Road and Heathrow Airport.



<b>Tenure:</b>	Leasehold (982 Years Remaining)	<b>Local Authority:</b>	Tower Hamlets
<b>Ground Rent:</b>	£350	<b>Council Tax Band:</b>	D
<b>Service Charge:</b>	£3,000	<b>EPC:</b>	B

# Floorplan

554 sq ft | 51.5 sq m



## Pan Peninsula

Pan Peninsula, 1 Millharbour, London, E14 9XP

## Sales

020 7536 7901 | [panp.sales@chaseevans.com](mailto:panp.sales@chaseevans.com)

## We're here to help.

IMPORTANT NOTICE - These particulars have been prepared in good faith and they are not intended to constitute part of an offer or contract. We have not performed a structural survey on this property and the services, appliances and specific fittings have not been tested. All photographs, measurements, floor plans and distances referred to are given as a guide and should not be relied upon.

[chaseevans.com](http://chaseevans.com)

 Chase Evans