



Undine Road, Isle of Dogs, E14

Asking price **£510,000** | Leasehold



Undine Road, Isle of Dogs, E14



2 Bedrooms



1 Bathroom



1 Reception



3 Balconies



Dock Views



Local Amenities



Nearby Parks



0.1 MI Mudchute

A lovely two bedroom split level maisonette with three balconies and parking set in a purpose built development. The property enjoys a house like feel with its own entrance on the 1st floor and accommodation arranged over the 2nd and 3rd floors.

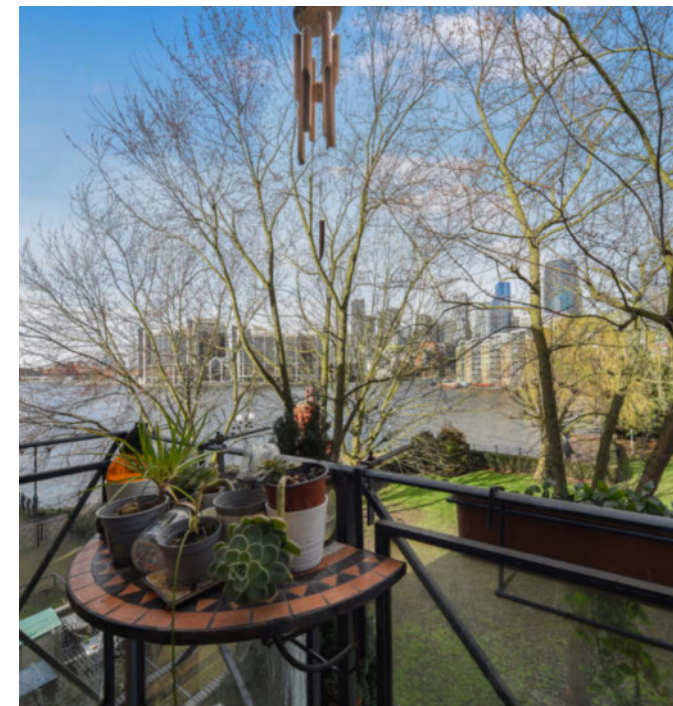
On the 2nd floor features include a living room with a balcony and views over the communal garden towards the dock, a separate kitchen and a balcony off the hall to rear of the building. On the 3rd floor (top) there are two bedrooms, both double in size and a family bathroom.

The property has the benefit of off street parking. Positioned by Millwall Outer dock and close to plenty of green spaces with Mudchute Park and farm and Millwall parks located close by. Asda supermarket and other close amenities are a short walk. Mudchute DLR station is 0.1 mile away affording excellent links into and out of London.

Tenure: Leasehold (959 years remaining) **Local Authority:** Tower Hamlets

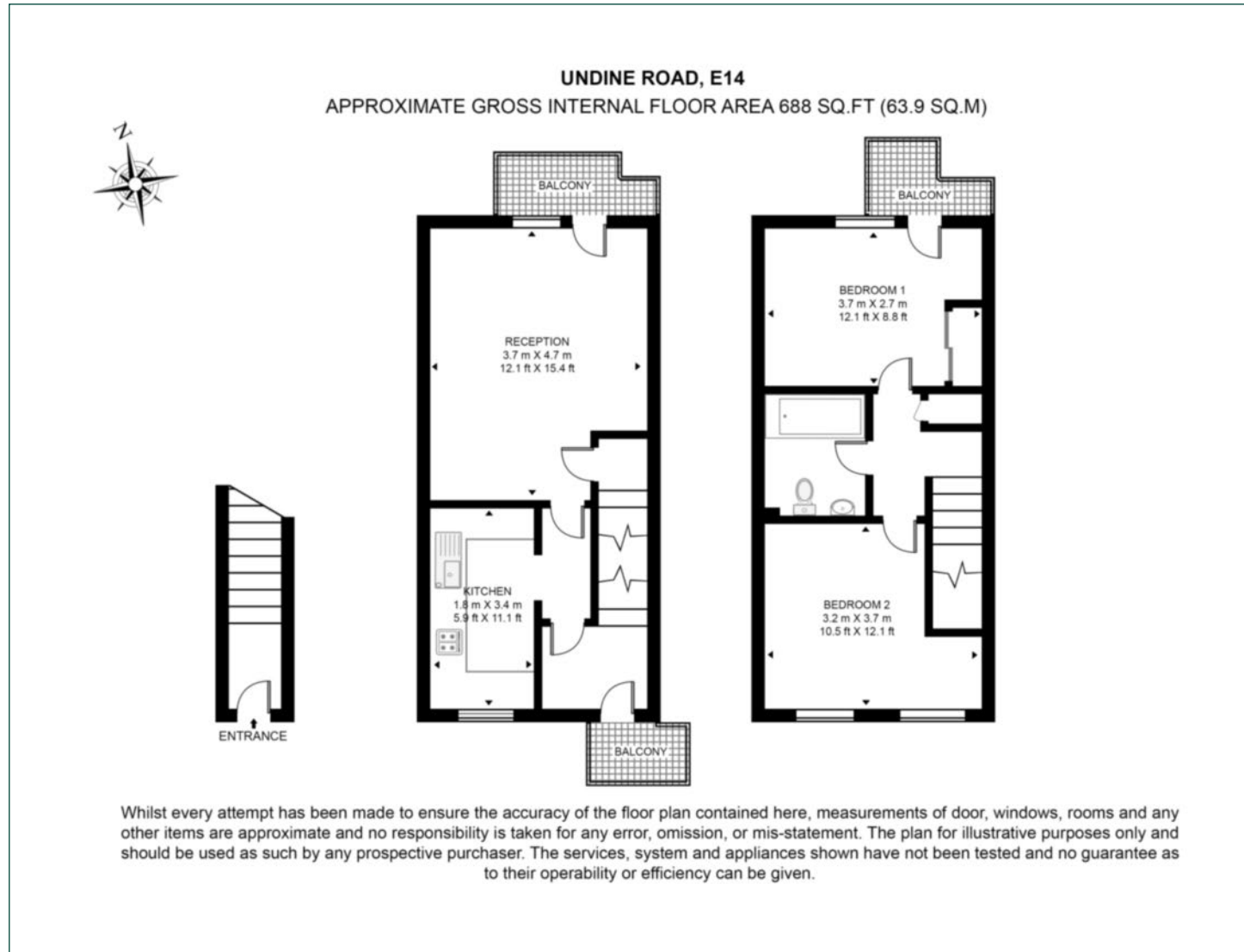
Ground Rent: £24 p.a. **Council Tax Band:** D

Service Charge: £700 p.a. **EPC:** C



Floorplan

688 sq ft | 63.9 sq m



Pan Peninsula

Pan Peninsula, 1 Millharbour, London, E14 9XP

Sales

020 7536 7901 | panp.sales@chaseevans.com

We're here to help.

IMPORTANT NOTICE - These particulars have been prepared in good faith and they are not intended to constitute part of an offer or contract. We have not performed a structural survey on this property and the services, appliances and specific fittings have not been tested. All photographs, measurements, floor plans and distances referred to are given as a guide and should not be relied upon.

chaseevans.com