



Cobalt Point, Millharbour, Canary Wharf, E14

Asking price **£385,000** | Leasehold



Cobalt Point, Millharbour, Canary Wharf, E14

-  1 Bedroom
-  1 Bathroom
-  1 Reception
-  Balcony
-  Parking
-  24-Hour Concierge
-  Gymnasium
-  Local Amenities of Canary Wharf
-  0.4 MI South Quay

A light one bedroom apartment with parking set on the 8th floor of this modern development, located close to Millwall Dock and the local shops and amenities of Millharbour.

The property comprises a bright open-plan kitchen/living area, a private balcony, a double bedroom and a bathroom with contemporary fittings. The property features wood flooring, floor-to-ceiling windows and recessed lighting.

Residents of Cobalt Point have the benefit of 24-hour concierge and a gym.

The development is located within walking distance of Canary Wharf's great selections of amenities and transport links for commutes across the Capital. South Quay DLR is located close by as well as Canary Wharf Underground Station with access to the Jubilee and Elizabeth lines.

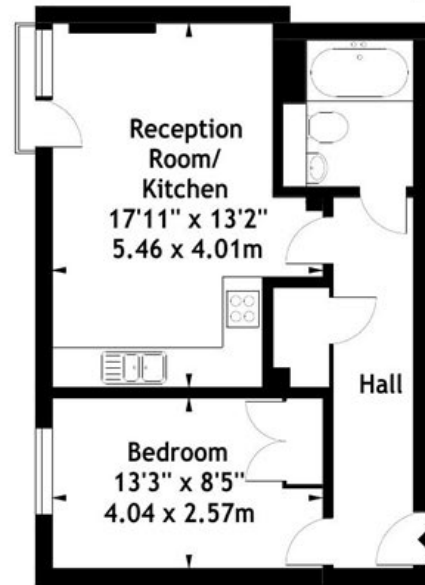


| | | | |
|------------------------|---------------------------------------|--------------------------|---------------|
| Tenure: | Leasehold (circa 982 years remaining) | Local Authority: | Tower Hamlets |
| Ground Rent: | £350 p.a. | Council Tax Band: | D |
| Service Charge: | £2,500 p.a. | EPC: | C |

Floorplan

468 sq ft | 43.48 sq m

Lanterns Court, E14
Approx. Gross Internal Area
468 Sq Ft - 43.48 Sq M



Eighth Floor

Measured in accordance with RICS guidelines. Every attempt is made to ensure accuracy, however all measurements are approximate. This floor plan is for illustrative purposes only and is not to scale.
© Datagraphy Ltd 2014
Photographs * Floorplans * Virtual Tours
Tel: 0845 643 4401 www.datagraphy.com

Pan Peninsula

Pan Peninsula, 1 Millharbour, London, E14 9XP

Sales

020 7536 7901 | panp.sales@chaseevans.com

We're here to help.

IMPORTANT NOTICE - These particulars have been prepared in good faith and they are not intended to constitute part of an offer or contract. We have not performed a structural survey on this property and the services, appliances and specific fittings have not been tested. All photographs, measurements, floor plans and distances referred to are given as a guide and should not be relied upon.

chaseevans.com