



Talisman Tower, Lincoln Plaza, Canary Wharf, E14

Price **£725 per week** | Furnished



Talisman Tower, Lincoln Plaza, Canary Wharf, E14



3 Bedrooms



2 Bathrooms



1 Reception



Prime Location



Local Amenities



24-Hour Concierge



0.2 MI South Quay

Modern three bedrooms, two bathrooms apartment situated in this modern development Lincoln Plaza, which is surrounded by the sustained growth of Canary Wharf. This apartment comprises ample living space, storage, an open plan stylish kitchen/living area, wooden flooring, floor to ceiling glazing, tiled bathroom with heated towel rack, bright bedrooms including built-in storage.

Facilities include 24-hour concierge, a four storey communal winter garden. Conveniently located for access to the South Quay DLR Station providing quick and easy links to Canary Wharf, Royal

Greenwich and London City Airport.



Local Authority:

Tower Hamlets

Council Tax Band:

G

EPC:

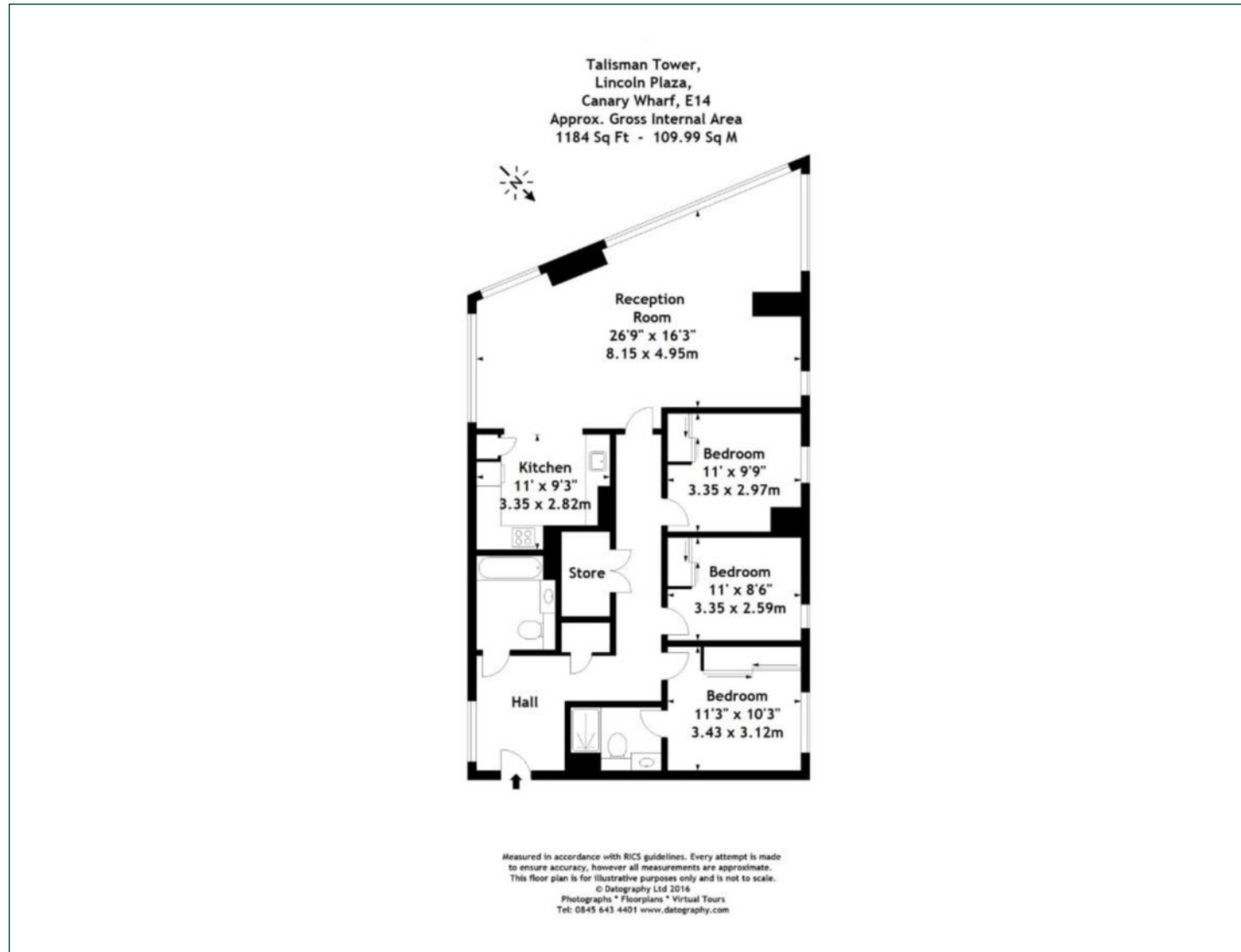
B

Security deposit:

equivalent to 5 weeks' rent

Floorplan

1,184 sq ft | 109.99 sq m



Pan Peninsula

Pan Peninsula, 1 Millharbour, London, E14 9XP

Lettings

020 7536 7900 | panp.lettings@chaseevans.com

We're here to help.

IMPORTANT NOTICE - These particulars have been prepared in good faith and they are not intended to constitute part of an offer or contract. We have not performed a structural survey on this property and the services, appliances and specific fittings have not been tested. All photographs, measurements, floor plans and distances referred to are given as a guide and should not be relied upon.

chaseevans.com