



Duckman Tower, Lincoln Plaza, Canary Wharf, E14

Asking price **£795,000** | Leasehold



Duckman Tower, Lincoln Plaza, Canary Wharf, E14



3 Bedrooms



2 Bathrooms



1 Reception



3 Balconies



Gymnasium



Local Amenities



24-Hour Concierge



0.2 MI South Quay

A spacious three bedroom, two bathroom apartment arranged over 998 sq ft set within a modern development located close to South Quay DLR and within easy reach of Canary Wharf. Features include a living room with two balconies, a semi open plan kitchen, master bedroom with an en-suite shower room and a balcony. The property is sold with parking.

Situated just 2 minutes walk from South Quay DLR station which makes commutes to Areas such as Bank achievable in just 14 minutes. Canary Wharf is walkable in just 10 minutes, providing Elizabeth

Line services which see's Tottenham Court Road and Heathrow Airport reached in 11 and 39 minutes respectively. Locally, there is a good selection of restaurants, bars and supermarkets.

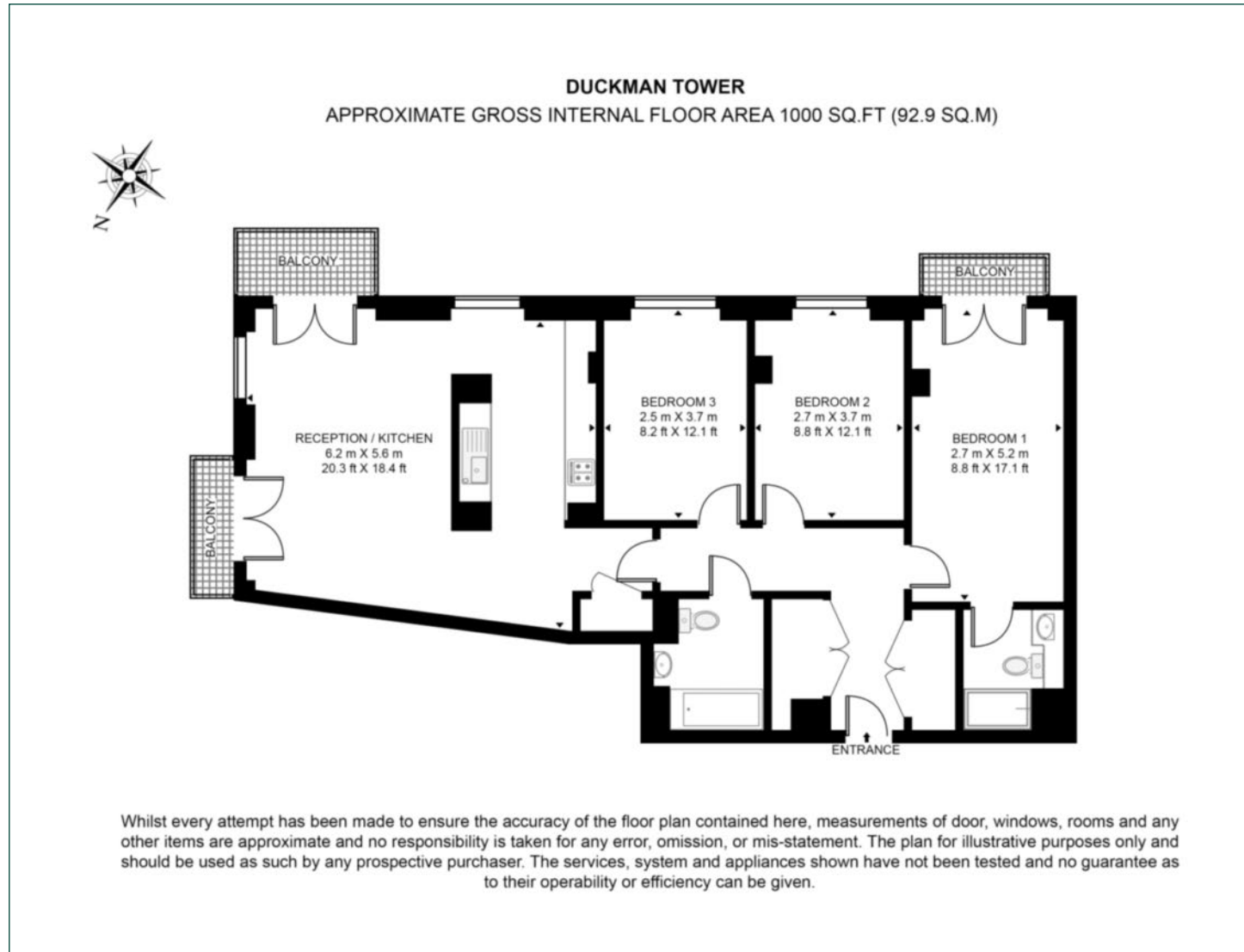
Tenure: Leasehold (999 years remaining) **Local Authority:** Tower Hamlets

Ground Rent: £400 p.a. **Council Tax Band:** G

Service Charge: £6,000 p.a. **EPC:** B

Floorplan

998 sq ft | 92.9 sq m



Pan Peninsula

Pan Peninsula, 1 Millharbour, London, E14 9XP

Sales

020 7536 7901 | panp.sales@chaseevans.co.uk

We're here to help.

IMPORTANT NOTICE - These particulars have been prepared in good faith and they are not intended to constitute part of an offer or contract. We have not performed a structural survey on this property and the services, appliances and specific fittings have not been tested. All photographs, measurements, floor plans and distances referred to are given as a guide and should not be relied upon.

chaseevans.com