












## East Tower, The Landmark, Canary Wharf, E14

Asking price **£490,000** | Leasehold



# East Tower, The Landmark, Canary Wharf, E14

-  1 Bedroom
-  1 Bathroom
-  1 Reception
-  Onsite Gym
-  Bicycle Storage
-  Local Amenities
-  Dock View
-  24-Hour Concierge
-  0.1 MI Heron Quays

A luxury one bedroom apartment with South Dock and Canary Wharf views in the Landmark Tower, Canary Wharf, E14. The apartment features open-plan living room/kitchen with integrated appliances, wood floors and large glazing, an ample bedroom with built-in wardrobes and a smart bathroom with contemporary fittings.

Residents benefit from 24-hour concierge, onsite gym and bicycle storage. Landmark East Tower is located adjacent to Heron Quays Station and a short walk from Canary Wharf, having easy access to restaurants, groceries, shops and cafés in the

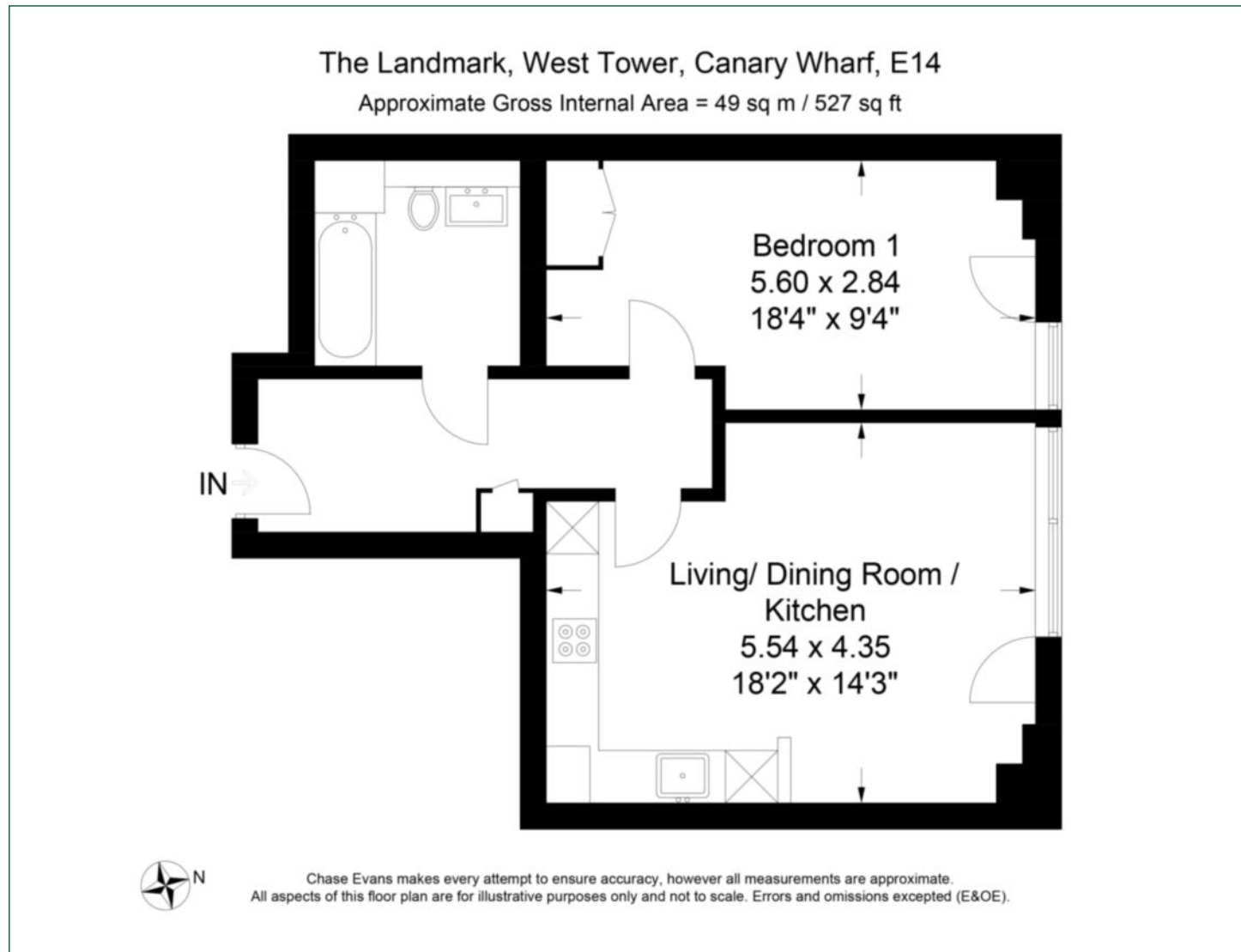
shopping centre and Canary Wharf station (0.5 miles), which is served by Jubilee and Elizabeth lines.



<b>Tenure:</b>	Leasehold (985 years from 2016)	<b>Local Authority:</b>	Tower Hamlets
<b>Ground Rent:</b>	£500 p.a.	<b>Council Tax Band:</b>	E
<b>Service Charge:</b>	Approx. £4,600 p.a.	<b>EPC:</b>	C

# Floorplan

527 sq ft | 49 sq m



## Pan Peninsula

Pan Peninsula, 1 Millharbour, London, E14 9XP

## Sales

020 7536 7901 | [panp.sales@chaseevans.com](mailto:panp.sales@chaseevans.com)

## We're here to help.

IMPORTANT NOTICE - These particulars have been prepared in good faith and they are not intended to constitute part of an offer or contract. We have not performed a structural survey on this property and the services, appliances and specific fittings have not been tested. All photographs, measurements, floor plans and distances referred to are given as a guide and should not be relied upon.

[chaseevans.com](http://chaseevans.com)

 Chase Evans