



Bevan Court, Tredegar Road, Bow, E3

Asking price **£425,000** | Leasehold



Bevan Court, Tredegar Road, Bow, E3



2 Bedrooms



1 Bathroom



1 Reception



Balcony



Parking



Close to 3 Large Parks



Close to Amenities & Roman Rd Market



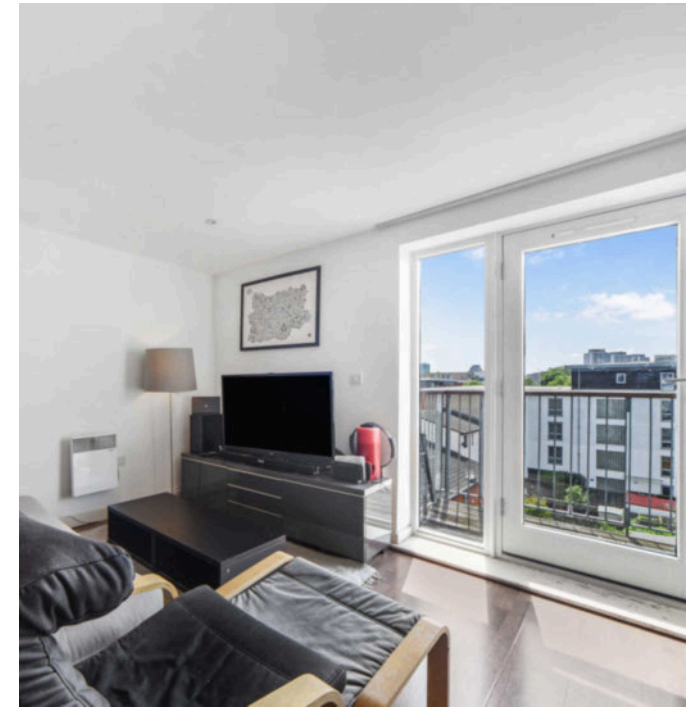
0.4 MI Bow Church

A well presented two double bedroom apartment with parking set within the purpose built development Bevan Court located in the heart of Bow. The property includes an open-plan living room/kitchen with wood flooring and large glazing that opens out onto a private balcony. There are two double bedrooms, also with wood flooring, and a family bathroom with contemporary fittings.

There are a range of amenities closeby to be enjoyed including cafes, shops and restaurants as well as the the Roman Road Market famed for it's street food, fashion and homewares.

The property is also placed between three large parks - Victoria Park, Queen Elizabeth Park and Mile End Park, some of the most visited parks in London, providing green spaces, gardens, sporting facilities, cafes, eateries and many events throughout the year.

The development is near a plethora of transport links including Bow Church DLR Station, Bow Road Underground Station (District and Hammersmith & City lines) and Mile End Underground Station (Central, District and Hammersmith & City lines).



Tenure: Leasehold (111 years remaining)

Local Authority: Tower Hamlets

Ground Rent: £450 p.a.

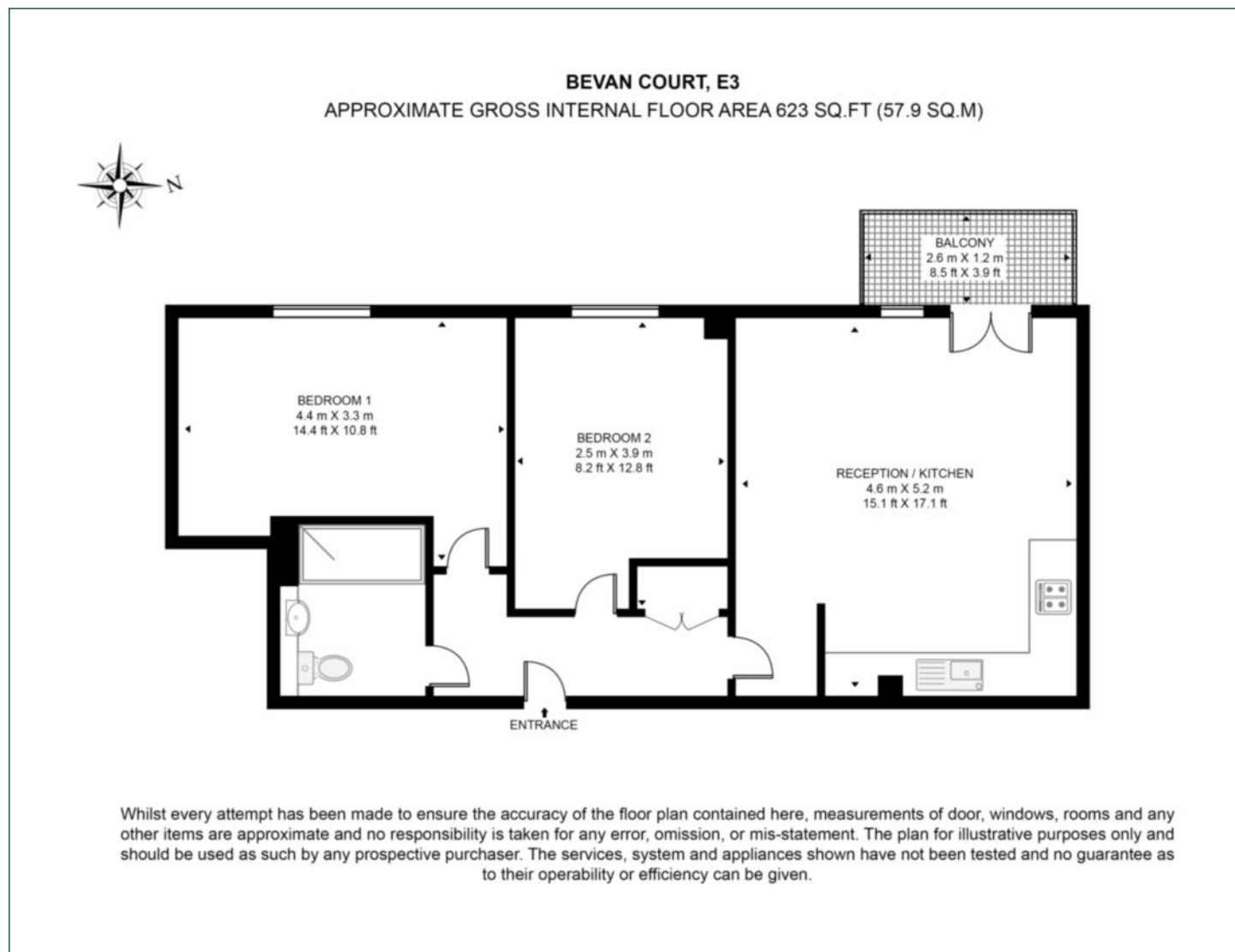
Council Tax Band: D

Service Charge: £2,600 p.a.

EPC: B

Floorplan

623 sq ft | 57.9 sq m



Pan Peninsula

Pan Peninsula, 1 Millharbour, London, E14 9XP

Sales

020 7536 7901 | panp.sales@chaseevans.com

We're here to help.

IMPORTANT NOTICE - These particulars have been prepared in good faith and they are not intended to constitute part of an offer or contract. We have not performed a structural survey on this property and the services, appliances and specific fittings have not been tested. All photographs, measurements, floor plans and distances referred to are given as a guide and should not be relied upon.

chaseevans.com