



## West Tower, Pan Peninsula, Canary Wharf, E14

Asking price **£315,000** | Leasehold



# West Tower, Pan Peninsula, Canary Wharf, E14



Studio



1 Bathroom



1 Reception



Balcony



Gymnasium



Prime Location



Local Amenities



24-Hour Concierge



0.2 MI South Quay

A well presented studio apartment with a rare white finish (most are black) set within Pan Peninsula with features including a private balcony, a well-equipped stylish kitchen, separate sleeping area with integrated pull down bed, extensive glazing and a shower room with marble fittings.

Residents have access to on-site facilities include 24-hour concierge service, extensive leisure complex with 16-meter Ozone pool and split-level gym, plus exclusive use of a designer cinema. The development is located within walking distance of Canary Wharf, providing access to several transport

links and amenities including the Canary Wharf Shopping Centre.

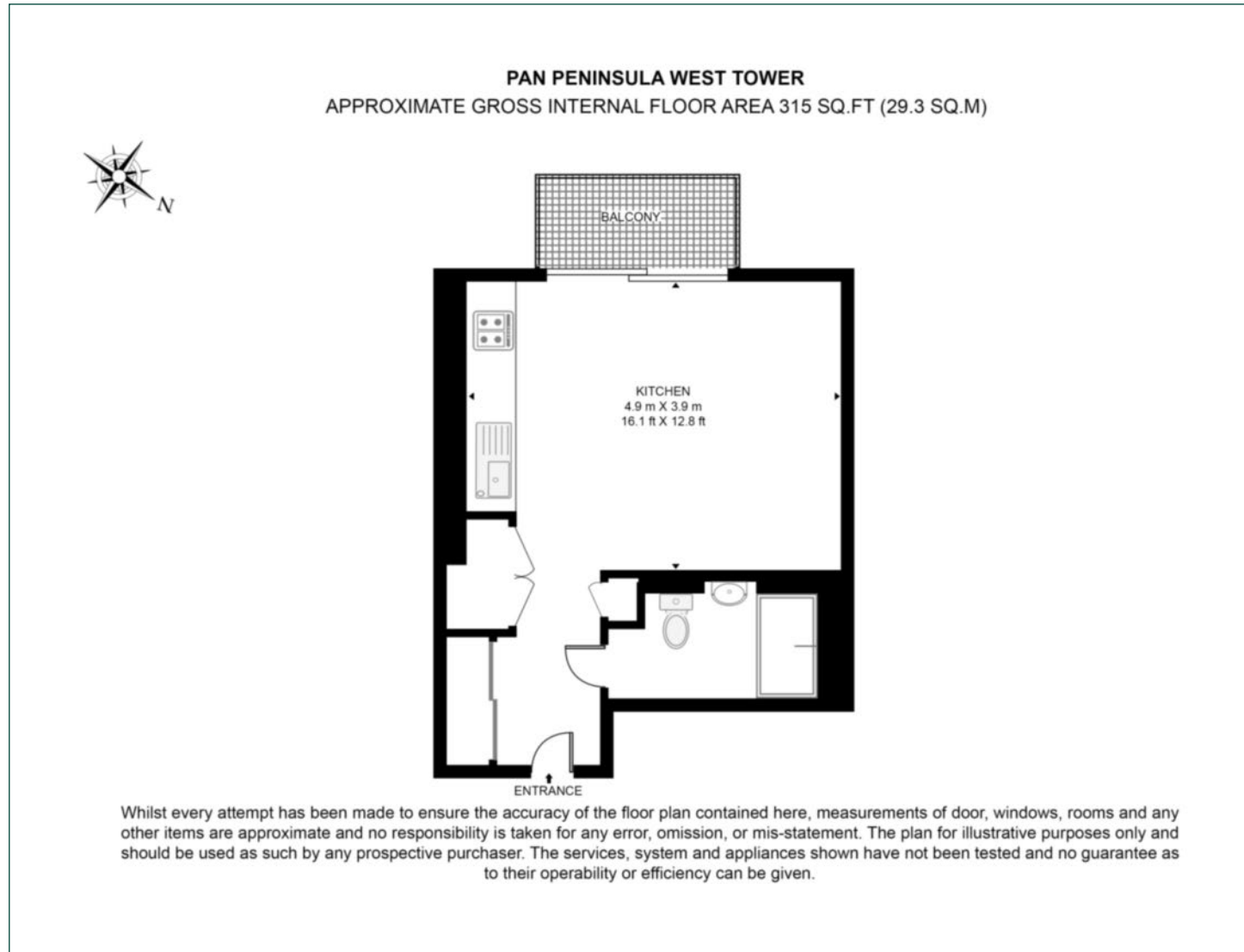
**Tenure:** Leasehold (999 years from new) **Local Authority:** Tower Hamlets

**Ground Rent:** £400 p.a. **Council Tax Band:** E

**Service Charge:** £4,066 p.a. **EPC:** B

# Floorplan

315 sq ft | 29.3 sq m



## Canary Wharf

Horizon Building, 15 Hertsmere Road, London, E14 4AW

## Sales

020 7515 1001 | [canarywharf.sales@chaseevans.co.uk](mailto:canarywharf.sales@chaseevans.co.uk)

## We're here to help.

IMPORTANT NOTICE - These particulars have been prepared in good faith and they are not intended to constitute part of an offer or contract. We have not performed a structural survey on this property and the services, appliances and specific fittings have not been tested. All photographs, measurements, floor plans and distances referred to are given as a guide and should not be relied upon.

[chaseevans.com](http://chaseevans.com)