



External Side View

GARDENS LODGE,
BLENHEIM PALACE GROUNDS

Particulars

Asking Rent: £4,000 per calendar month

Available from: End of August 2024

Location: The property is situated within the Grounds of Blenheim Palace, tucked away adjacent to the Walled Gardens and within walking distance of Woodstock Town.

There are good bus connections to Oxford and Witney and beyond, with Hanborough Train Station a 5 minute car journey, for easy access to Birmingham and London.

Please note all images below are of CGIs of the intended finish.



Kitchen

Gardens Lodge, is currently undergoing a full redecoration which will include:

- New Kitchen
- New Utility Space
- New Bathroom
- New Carpets
- Complete internal and external redecoration

We will also be reviewing the Energy Performance Certificate.

The Property

Downstairs the property offers a Utility Room, WC, Kitchen / Breakfast Room, Living Room with feature fireplace and separate dining room. This property is unique and offers lots of Character including a beautiful stain glass window in the entrance hallway. The Kitchen / Breakfast room is fully fitted with units, a pantry cupboard, built in Double Oven, Hob and Extractor, fridge freezer and a built in Dishwasher.



Kitchen

Upstairs you have Three Double Bedrooms with built in wardrobe to both the Master Bedroom and Bedroom Two.

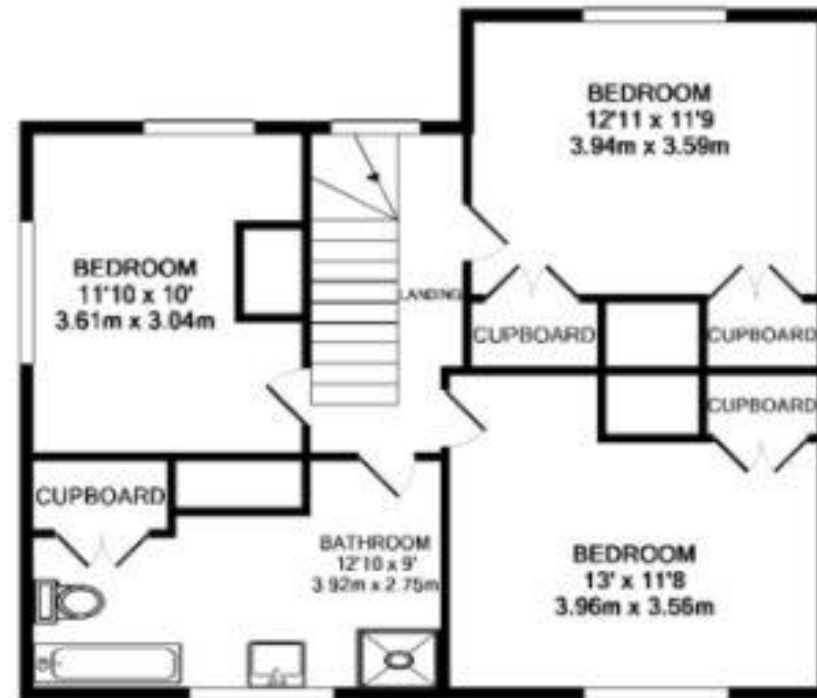
The Master bathroom is fitted with a Three Piece Suite which includes a separate Bath and Shower Cubicle.



Utility

Externally there is parking for multiple vehicles, a wraparound Garden with patio and a garage.

Floorplan



1ST FLOOR