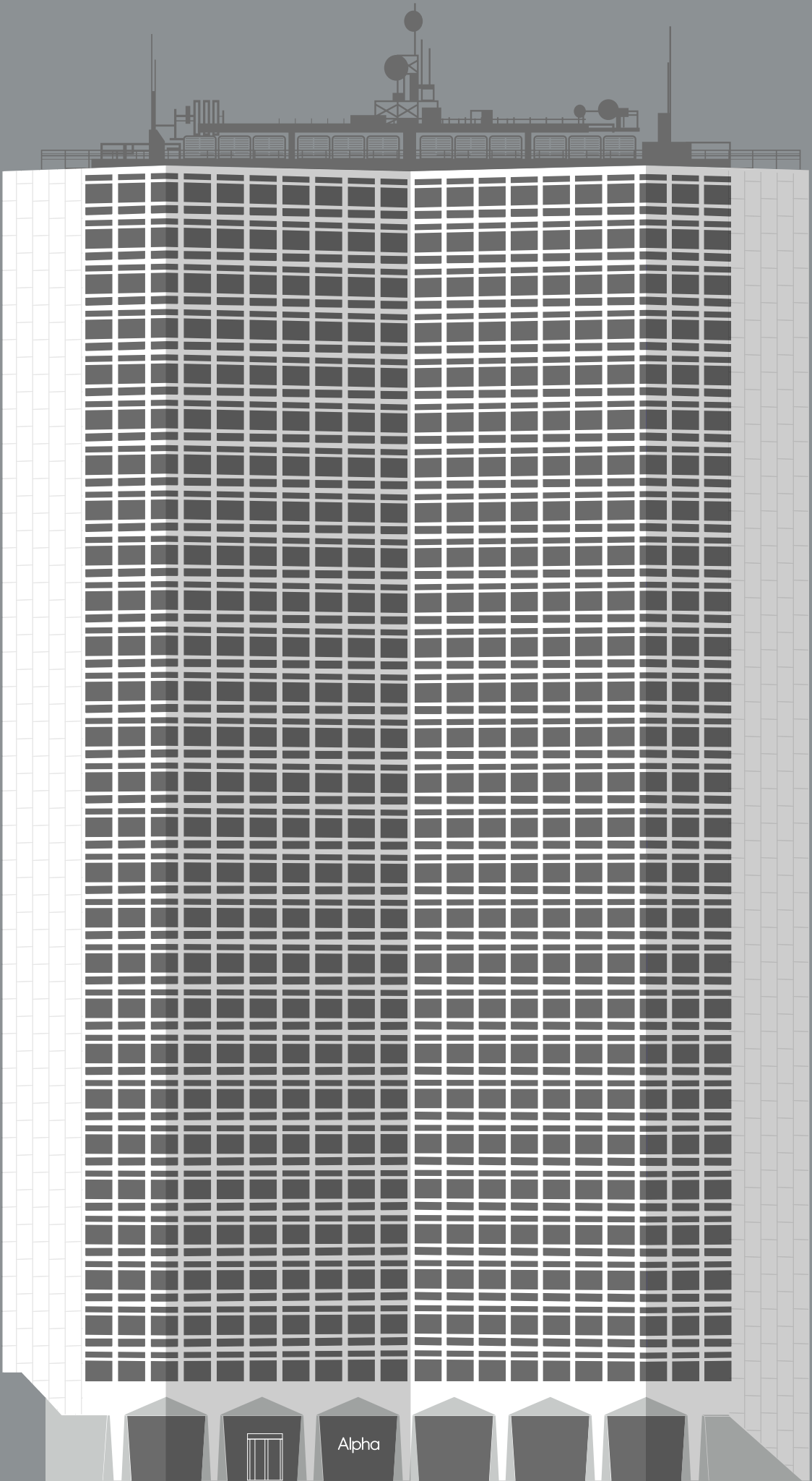


# Alpha



Alpha

# An inspiring place for businesses to develop and evolve.

Ideally situated in the heart of Birmingham's vibrant city centre, designed with flexibility in mind, Alpha offers open plan floorplates of 7,000 sq ft, as well as smaller fully furnished studios and co-working.



Following a major refurbishment the modernist tower has been renewed to create light spacious office space and contemporary facilities.

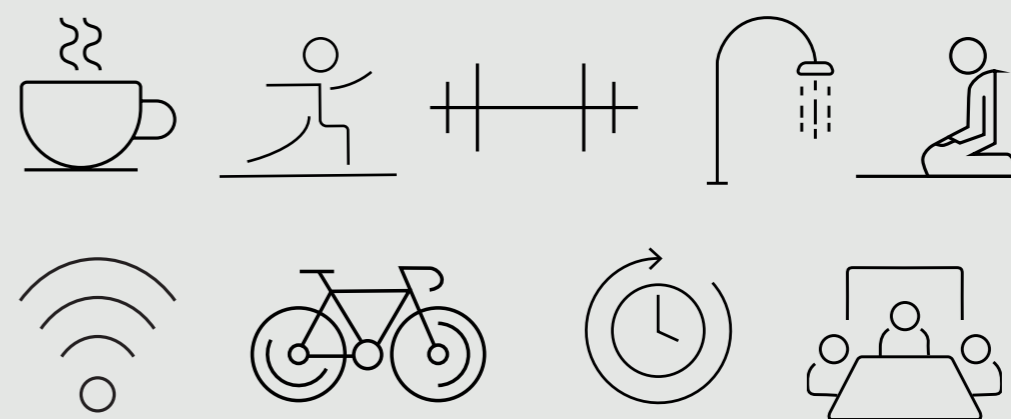
Alpha



# Everything you need is right here.

For that Work/Life balance

At Alpha there's state-of-the-art technology throughout so whether you're working from your studio, a meeting room or one of the many comfy breakout spaces we're here to help get you through the day.



### What's included?

- Refurbished reception
- Collaborative breakout spaces
- Onsite café
- New wellness studio with gym and spin classes
- Contemplation rooms
- Upgraded showers, changing and locker facilities
- Refurbished secure cycle storage with space for 200 bicycles
- Five high-speed destination lifts
- Goods lift
- 196 car parking spaces
- 24/7 Access
- Variety of Grade A specified and fully fitted Grade B office suites

Best views in Birmingham.





## Alpha Wellness & Café

Keeping the body and mind well & nourished

Our newly installed Alpha Wellness studio allows you to exercise in comfort. Work out in the gym with access to new exercise facilities and all the latest fitness equipment or drop into a yoga or spin class.

Upgraded changing rooms come with everything you need – showers, storage, hair dryers and straighteners. There's also a contemplation room. With plenty of bike storage and parking and 24/7 access, whether you're an early bird or a night owl we've got you covered.

### Artisan, Local & Independent

The Alpha Café serves up artisan coffee and ingredients from local independent suppliers focused on quality. With daily baked bread, single origin freshly roasted coffee, hand-made sandwiches, salads, flavourful soups and delicious cakes and bakes are on offer daily.



## Flexible workspace redefined.

At Alpha we understand the importance for tenants to find space that reflects the requirements for their business, not just for today but also in the future.

This is why we have made it easy for you to choose from a range of space solutions to work around your needs, so you can concentrate on what's important to you, your business.



### Alpha Works

Hot desk, co-working and private offices ideal for entrepreneurs and SMEs.

Perfect for the modern mobile individual, just bring your ideas, your laptop and get to work.

Find out more on the Alpha Works website.

### Fitted Space

Fully-furnished, self-contained, Let Ready suites available for immediate occupation.

- 24/7 access and your own front door
- High-speed broadband and WiFi
- High-spec workstations and kitchenette
- A fully furnished meeting room
- A dedicated parking space
- All-inclusive monthly rent



### Cat A

Open-plan part floors from 3,310 sq ft to whole floorplates of 7,100 sq ft.

1. Grade A specification
2. Raised access floors
3. LED panel lighting
4. Four-pipe coil fan air conditioning

Fully furnished space  
ready for you to get to work  
straight away.

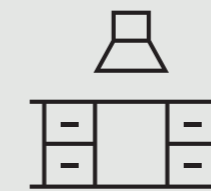






## Fully furnished space ready to go.

Fully furnished self-contained fitted space inclusive of kitchen facilities, a dedicated meeting room and super-fast broadband, all available with flexible leases.



### What's included?

- 24/7 access and your own front door
- Access to Alpha Works amenities
- High-speed broadband & WIFI
- High spec workstations
- Ergonomic chairs
- Kitchen with integrated dishwasher and fridge
- A furnished meeting room
- Beautiful breakout space
- A dedicated parking space
- All-inclusive monthly rent

Our Business Community

ARUP

Corstorphine & Wright

HOLLIS

PROBRAND



## Cat A space from 3,310 – 7,130 sq ft, designed for maximum flexibility.

Generous Cat A floorplates which can be easily divided into suites providing optimum flexibility to accommodate a variety of tenant requirements.

Each high specification floor can accommodate a diverse range of office layouts to suit today's evolving working practices, giving piece of mind with both versatility and quality.

Natural light from all elevations also promotes a productive working environment, whilst large windows perfectly frame panoramic views across the city landscape.

### Grade A specification:

1. Raised access floors
2. Metal suspended ceilings
3. LED panel lighting
4. Four-pipe fan coil air conditioning



“I can’t imagine any place where we could have grown so quickly, in such a short time, without any downtime”

RAV KUMAR, DIRECTOR  
Corstorphine & Wright



# Introducing Life by CEG

Our holistic property management approach allows us to get to know our tenants in more detail, creating a positive experience for all businesses, individual tenants and visitors.

## In-house at every step

Unlike other landlords, we have the internal expertise and choose to manage every detail of our buildings. This includes front of house, facilities management, and all health and safety aspects. In our experience, this works better for our customers.

We want to remove all the barriers to creating a healthier and more sustainable day.healthy journey with your neighbours.



## Café Partnership

We partner with local café operators to provide our tenants with affordable healthy meals, coffees and treats.

CEG look to subsidise meal deals in conjunction with the community app, ensuring we support our tenants daily.



## Our Community App

Our Life by CEG app joins the dots between work and life. Helping you, your team, and local businesses connect.

The app allows you to unlock the potential of your building, connect with people, report an issue, book meeting rooms and gym classes and discover local deals and discount codes.



Alpha

## Creating a healthier day

Reducing our tenant's daily carbon footprint is integral to our wellness and sustainability strategy.

We provide enhanced bike storage and shower facilities to help encourage cycling to work, lunchtime gym sessions or after-work yoga.








Join our vibrant  
Business Community



# At the heart of one of the most vibrant parts of the city.

Alpha's enviable location takes advantage of easy access to the city's extensive road network with tenants benefiting from onsite basement parking.

Surrounded by a wide range of fantastic amenities, Alpha couldn't be better placed to access a range of stylish bars, coffee shops, restaurants and hotels, as well as Michelin-starred establishments providing exceptional cuisine.

-  02 min New Street Station
-  72 min London
-  10min Birmingham Int Airport
-  25 min Wolverhampton
-  to M5, M6, M40 M42





# Alpha

## Get in touch

To arrange a viewing please contact one of our agents:

**Ben Thacker**

0121 200 4561

07917 218 244

[ben.thacker@savills.com](mailto:ben.thacker@savills.com)

**Theo Holmes**

0121 627 5510

07967 802 656

[theo.holmes@cbre.com](mailto:theo.holmes@cbre.com)



[www.alphabirmingham.co.uk](http://www.alphabirmingham.co.uk)

Suffolk St Queensway, Birmingham B1 1TT