

INNOVATION
BIRMINGHAM

MORE THAN WORKSPACE

[Find out more](#)

bruntwood
SciTech

ABOUT BRUNTWOOD SCITECH

Bruntwood SciTech is the UK's leading property provider dedicated to the growth of the science and technology sector, creating a network of thriving innovation districts.

Innovation Birmingham is part of the Bruntwood SciTech network of innovation districts. A vibrant community of over 500 of the UK's most innovative and disruptive science and technology businesses.

Our sector-specialist clusters across Manchester, Leeds, Liverpool and Birmingham provide you with the support your business needs to form, scale or grow. This means connecting you to opportunities to access finance, talent and markets through our unrivalled public, private, academic and clinical partner network and fostering collaboration and connections with companies based across the SciTech network.

The results* of being based in the Bruntwood SciTech network speak for themselves:

2/3

of businesses benefit from being located in the Bruntwood SciTech network

Over

60%

of businesses say that their Bruntwood SciTech location has the infrastructure needed to help them grow their business

Over

60%

of businesses say their Bruntwood SciTech location gives them access to the skills their business needs

40%

of businesses in the Bruntwood SciTech network have grown employment in the last 12 months

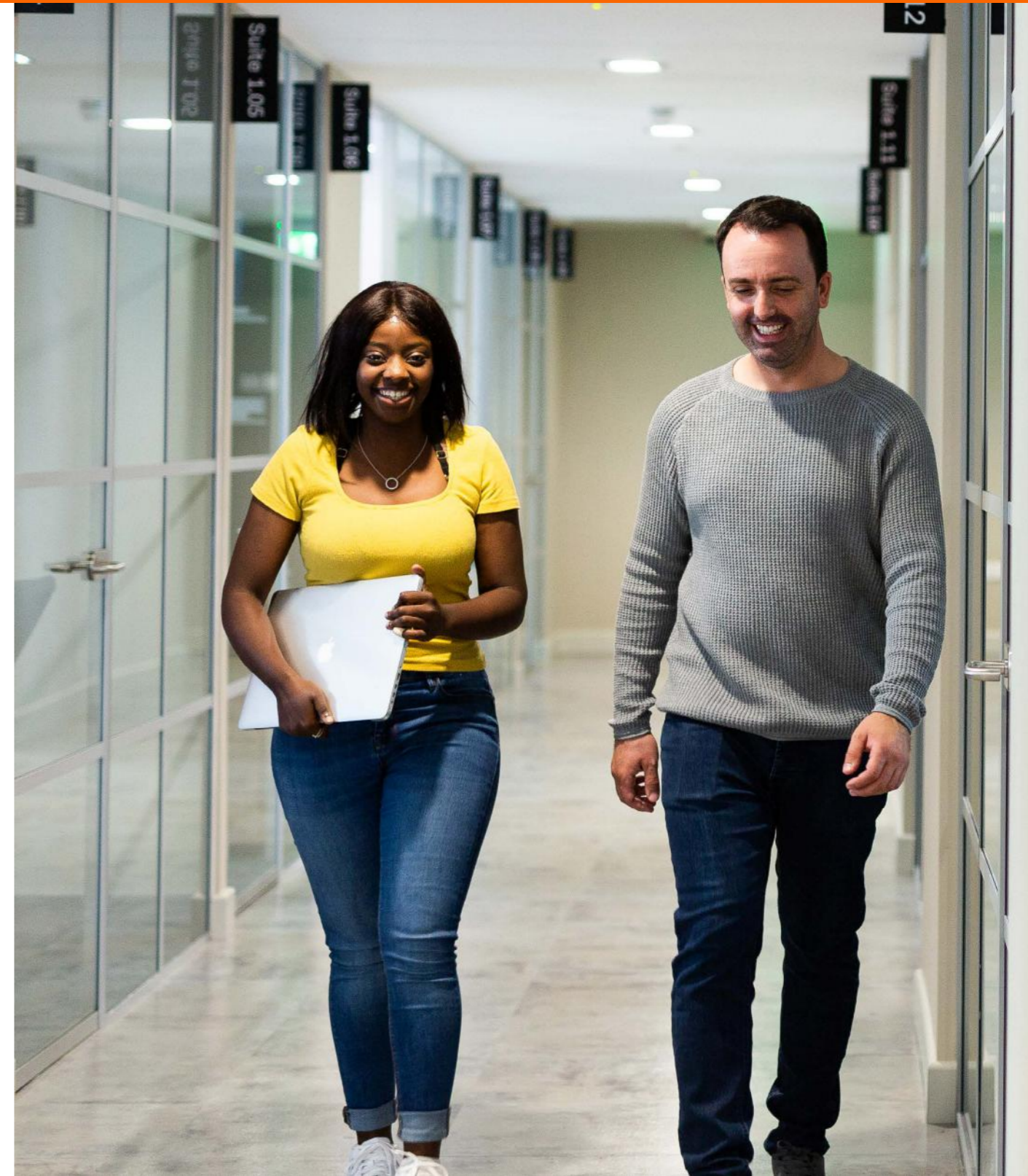
1/4

of businesses in the Bruntwood SciTech network have raised investment in last 12 months

9/10

of businesses based in the Bruntwood SciTech network are confident of their future prospects, 44% very confident

*An independent survey with over 400 Bruntwood SciTech customers in February 2020



WHY INNOVATION BIRMINGHAM?



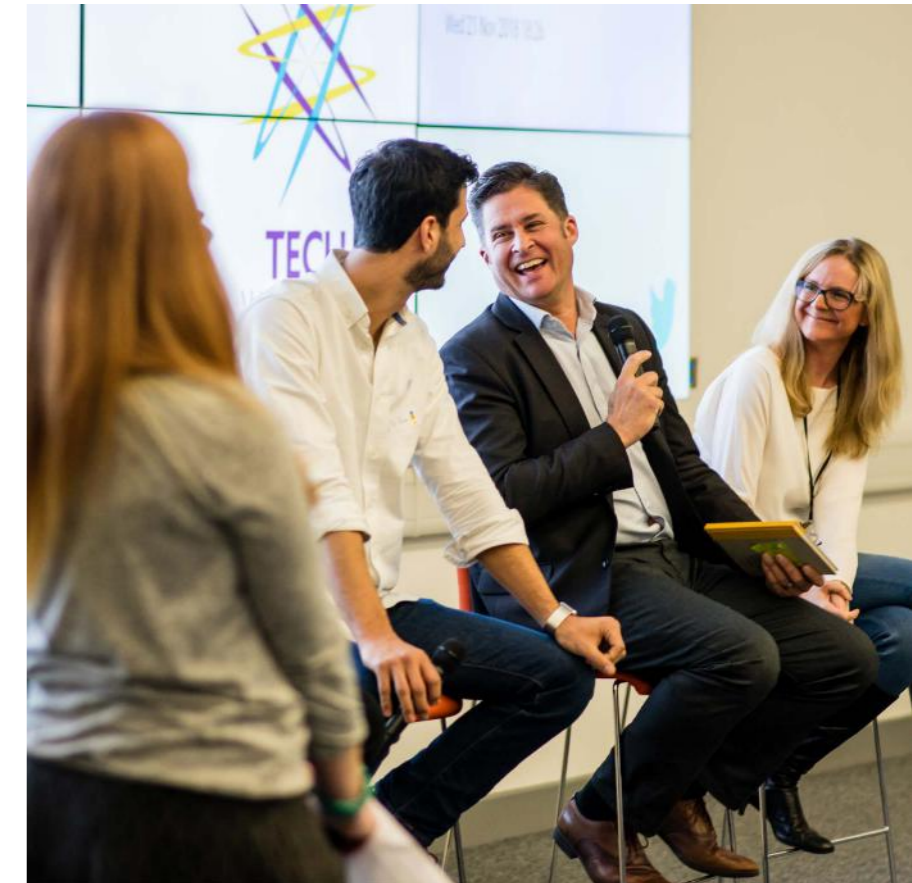
A CAMPUS FOR INNOVATION

Located in the heart of Birmingham's Knowledge Quarter, Innovation Birmingham is a unique campus where digital tech businesses can thrive.



STRATEGIC PARTNERSHIPS

Enabling strategic customer partnerships, providing access to skills, talent and research through an unrivalled partner network with universities and other key Birmingham stakeholders. Our extensive partner network also provides access to investment, helping businesses to raise essential growth capital. Companies based at Innovation Birmingham raised £2.25m in 2020.



FLEXIBLE COMMUNAL SPACES

Access to communal spaces across the campus such as conference facilities, meeting rooms, lounges and community areas mean that customers can get maximum efficiency from their space by having the flexibility to use these spaces.



ESTABLISHED EVENTS PROGRAMME

Dedicated events and community programme connecting customers with like-minded companies and potential partners.



AN INNOVATION DISTRICT IN THE HEART OF THE KNOWLEDGE QUARTER

CONNECTED HUB



Direct connections to all major rail networks



1hr 25mins to London



20 mins by car to Birmingham Airport



Innovation Birmingham

ASTON UNIVERSITY

BIRMINGHAM CHILDREN'S HOSPITAL

ROYAL BIRMINGHAM CONSERVATOIRE

CURZON EDUCATIONAL CENTRE

BIRMINGHAM CITY UNIVERSITY

BIRMINGHAM SNOW HILL

CITY CENTRE

BIRMINGHAM MOOR ST

BIRMINGHAM NEW ST

ASTON EXPRESSWAY

OFFICE SPACE AT INNOVATION BIRMINGHAM

Whether you're looking for hotdesking, coworking or conventional office space for your whole company, Innovation Birmingham offers a wide range of flexible solutions to help you grow your business and get the most out of your team.



FLEXIBLE SPACE

Office space at Innovation Birmingham offers maximum flexibility and is available from as little as £145 per month. Access to dedicated business support, community events, meeting rooms, event space, car parking, cycle storage and showers is included.

HOTDESKING:

Access shared desks in a coworking space for digital & tech startups and small businesses. Providing everything you need to get started straight away. From £145 pcm.

COWORKING:

Access dedicated desks with guaranteed workstations in a coworking space for digital & tech startups and small businesses. From £195 pcm.

LEASED OFFICES:

Flexible leased office space is available from 500-7,000 sq ft for tech and digital businesses. Choose whether to fit your own space or let us handle it for you with a fully furnished suite. From £24 per sq ft.

SERVICED OFFICES:

Newly refurbished serviced office space suitable for 2-12 people with business lounge and modern kitchen. From £250 per desk per month.



Flexible contracts



Regular cleaning of communal areas



Regular programme of social, wellbeing and business events



25% meeting room discount



Access to shared kitchen areas



24 hour access



Office furniture



High quality tea and coffee



On-site reception team



5G also available in many of our spaces



Mail handling



ADDITIONAL SERVICES AND AMENITIES AT INNOVATION BIRMINGHAM



CAR PARKING:

Conveniently located outside city's Clean Air Zone

Direct access to Innovation Birmingham car park

Flexi parking day rate

Secure car parking facilities



INTERNET SERVICES:

Bandwidth	Serviced
100Mb Contended*	Included in Desk Rate
2Mb Dedicated	£100
5Mb Dedicated	£200
10Mb Dedicated	£300
20Mb Dedicated	£400
50Mb Dedicated	£500
100Mb Dedicated	£700

Prices listed are pcm and subject to VAT
*Fair usage policy applies to all contended customers



POSTAL SERVICES:

Stamps / franking - 15% handling charge





Access to funding and finance



Access to talent



Access to our partner network



Access to research and development



Campus auditorium and events facility



On site cafe



Access to Campus showers and locker room facilities



Breakout areas and outside space



Meeting rooms

ENTERPRISE WHARF

Due to complete in late 2022, Birmingham's first smart-enabled building, Enterprise Wharf offers 120,000 sq ft of contemporary, flexible workspace designed with digital and tech businesses in mind.

With a large, welcoming, open plan ground floor reception offering a range of amenities and a roof garden with stunning views across the city, Enterprise Wharf is the perfect hub for larger digital and tech businesses wishing to benefit from based within a vibrant tech hub.



[View flythrough](#)



Birmingham's first smart enabled building



Canalside location



Neutral host



Roof terrace



5G enabled throughout



120,000 sqft



Fast broadband connections



Secure car parking and bike storage

ENTERPRISE WHARF

BUILDING STACKER & TECHNICAL SPECIFICATION

Innovative M&E Systems to achieve low carbon emissions

Fully Air Conditioned

5.5M High Ground Floor (Reception And Ground Floor Suites)

3.35M Floor to ceiling height with an exposed concrete soffit and steel beams

Energy efficient led lighting

Showers, changing and kit drying facilities

Secure cycle storage

8th floor suite with private terrace

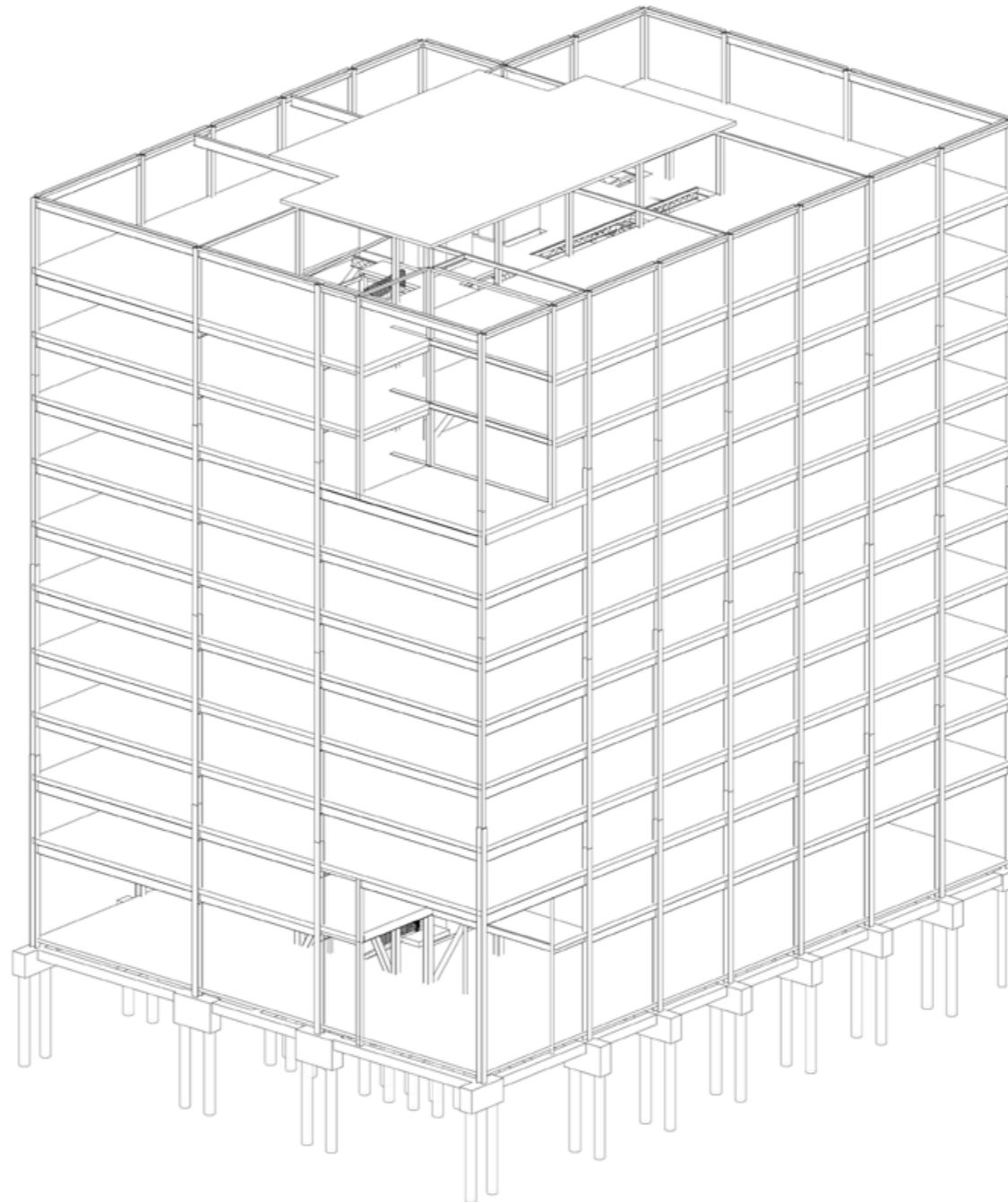
Full access 150mm raised access floor

Floor to ceiling glazing on all elevations

12,690 Sq ft upper floorplates

Extensive new landscaping and canal redevelopment

Integrated Smart Building Technology



SQ M	SQ FT	FLOOR
1103 m ²	11873 ft ²	9
1103 m ²	11873 ft ²	8
1179 m ²	12691 ft ²	7
1179 m ²	12691 ft ²	6
1179 m ²	12691 ft ²	5
1179 m ²	12691 ft ²	4
1179 m ²	12691 ft ²	3
1179 m ²	12691 ft ²	2
1106 m ²	11905 ft ²	1
651 m ²	7007 ft ²	G
11037 m²	118802 ft²	TOTAL



SUPPORT FOR YOUR BUSINESS, EVENTS & COMMUNITY

Innovation Birmingham offers everything you need to help your business grow - tailored business support, a vibrant events programme and a collaborative community.

Book a 1-1 with our innovation team for tailored advice to; support the development of your commercial strategy, connect you with mentors and investment opportunities, access peer group coaching or connect into our unrivalled public, private, academic and clinical network to help you access new partners and markets. Our team will also signpost you to plenty of webinars, training workshops and networking sessions.

Our vibrant events programme connects you to over 500 science and tech businesses from across the Bruntwood SciTech network, to experts in tax, PR, marketing and recruitment and also includes a series of sector-specialist seminars; ideal for networking and identifying new opportunities for collaboration.

Our calendar of social and wellbeing events has been specifically designed to support you to help your business thrive, including sector specific meet ups, running clubs and socials. All great ways to make new connections and recharge body and mind.

You'll also have full access to conference and events facilities, communal business lounges, private soundproof workstations and meeting rooms.



COMMERCIAL TRACTION

We are currently engaged in commercial discussions with the below Companies about deals to integrate our services:

 GYMSHARK LIFTING CLUB UK'S LARGEST FITNESS BRAND PILOT SITE UNDERWAY OCTOBER INSTALL	 ASTON UNIVERSITY GYM 30 X SPIN BIKES DEAL SECURED OCTOBER INSTALL	 LEADING EQUIPMENT SUPPLIER IP INTEGRATION DISCUSSIONS SCOPE FOR TECH INTEGRATION PARTNERED DISTRIBUTION	 HIGH-END GYM CHAIN COMMERCIAL TALKS UNDERWAY PENDING PILOT TEST
---	--	--	---

ADDITIONAL TRACTION:
 UK'S 2ND LARGEST GYM CHAIN - EARLY STAGE COMMERCIAL TALKS IN PROGRESS

JOIN A COMMUNITY OF INNOVATORS





**WHO'S
ALREADY HERE**

ENERGYGYM
HUMAN POWER

"The support that we're getting from Innovation Birmingham is fantastic. The place is full of excitement. It's full of diversity, of other businesses doing very exciting technical things. There's loads of lively events going on, and the access to finance and business support we've tapped into as well as the access to universities around the local area has been great."

Will Flint
CEO, Energygym

hello.scitech@bruntwood.co.uk
0800 731 0300

 @BW_SciTech
 bruntwood-scitech

bruntwood
SciTech