



BIRMINGHAM HEALTH INNOVATION CAMPUS



Birmingham Health
Innovation Campus

A partnership between



UNIVERSITY OF
BIRMINGHAM

bruntwood
SciTech

A TEN YEAR VISION FOR THE REGION



BIRMINGHAM HEALTH

INNOVATION CAMPUS



New life science campus for the West Midlands, delivered in partnership with University of Birmingham



Delivering 657,000 sq ft. of state of the art lab, office and incubation space by 2031



£210m, 10-year masterplan currently being developed



Part of a fully connected healthcare system



Phase 1 includes a 133,000 sq ft. purpose-built, six-storey building designed for precision health, medtech and digital health businesses



Lab and office space purpose-built for companies working in medtech, precision medicine, diagnostics and digital healthcare



50% pre-let to the University's Precision Health Technologies Accelerator (PHTA) due to complete in 2023



A designated Life Science Opportunity and High Potential Opportunity for data driven healthcare

133,000

sq ft. of new build office and laboratory space
with associated public realm and 233 car spaces

LONG
TERM

partnership with University of Birmingham,
closely aligned to Birmingham Health Partners

SUMMER
2024

practical completion date





BHIC MASTERPLAN - FUTURE PHASES



NO.2 BHIC

Floor	Size (NIA, sq ft)
Sixth	14,424
Fifth	14,424
Fourth	14,424
Third	14,424
Second	14,424
First	14,424
Ground	14,424
Lower Ground	7,642
Total	108,610

 10 acre site to deliver 657,000 sq ft as part of a ten year masterplan

 Long term partnership with University of Birmingham, closely aligned to Birmingham Health Partners

 Development in 6 phases (Phase 1 in Summer 2024; Total site completion 2031)



**BIRMINGHAM HEALTH
INNOVATION CAMPUS**

KEY LOCATIONS

1. Birmingham Health Innovation Campus
2. The Barberry - National Centre for Mental Health
3. Centre for Translational Inflammation Research
4. NIHR/Wellcome Trust Birmingham Clinical Research Facility
5. Centre for Clinical Haematology
6. NIHR Liver Biomedical Research Unit
7. Advanced Therapies Facility and Human Biomaterials Resource Centre
8. Institute of Transitional Medicine
9. NIHR Surgical Reconstruction and Microbiology Research Centre
10. NIHR Trauma Management Healthcare Technology Co-operation
11. Centre for Rare Diseases
12. NIHR Experimental Cancer Medicine Centre
13. NIHR Biomedical Research Centre in Inflammatory Diseases
14. CRUK Clinical Trials Unit
15. University of Birmingham Medical School
16. Birmingham University Imaging Centre
17. NHS Blood and Transplant Services
18. Biohub Birmingham (Research Park)
19. Birmingham Clinical Trials Unit
20. University of Birmingham Schools of Chemical & Mechanical Engineering Buildings
21. Centre for Computational Biology
22. Birmingham Dental Hospital and School of Dentistry
23. Centre for Human Brain Health
24. Health Services Management Centre
25. Henry Welcome Nuclear Magnetic Resonance Facility

A UNIQUE OPPORTUNITY TO PAVE THE WAY

RANKED 6TH

in the UK for research power in Clinical Sciences:
Research Excellence Framework 2021



Excellence in Medical & Health Research

- Inflammation & Ageing
- Dentistry
- Cancer & Genomics
- Clinical Sciences
- Microbiology & Infection
- Applied & Global Health
- Cardiovascular Science
- Maternal, Metabolism & Systems
- Immunology & Immunotherapy
- Mental Health & Wellbeing



Connected with outstanding NHS partners

UHBFT is the UK's

LARGEST

largest NHS Trust



Flagship QEHB
"super-hospital"

Treating more than
2.2m patients per year

Employing over **20,000** staff

Over **2,700** bed
across its sites

turnover of **£1.6bn** per year

Birmingham Women's and Children's Hospital is the

FIRST

of its kind in the UK

Birmingham Women's and Children's NHS
NHS Foundation Trust

Uniting specialist care for thousands of women,
children and families in the West Midlands,
chaired by Sir Bruce Keogh.



A unified vision for "research that matters" locally, regionally and internationally.

LEVERAGING TRANSLATIONAL INFRASTRUCTURE TO DELIVER SOLUTIONS, FASTER



£24m co-investment BEIS and BHP

Provides platform for interactions between industry, researchers, clinicians, biostatisticians and trial design experts



Only UK national centre supporting the development and delivery of novel therapeutics and medical devices, through advanced regulatory standards and tools
Partners with MHRA, HRA, FDA, EMA



Largest Genomics Medicine Centre and Lab Hub in UK

Systems rolled out across 17 regional NHS Trusts
West Midlands & Wessex GLH population of 11m



One of 6 national Substantive Sites running 2 of 7 National Hubs

With Leicester, Nottingham, Warwick
Only Site with NHS core partner (UHB)
Focus on secondary healthcare data



Largest NIHR Clinical Research Facility

Adult and paediatric experimental medicine facilities
Recruited over 120,000 patients to more than 400 studies



Running > 50% all UK ATMP trials (7% globally)

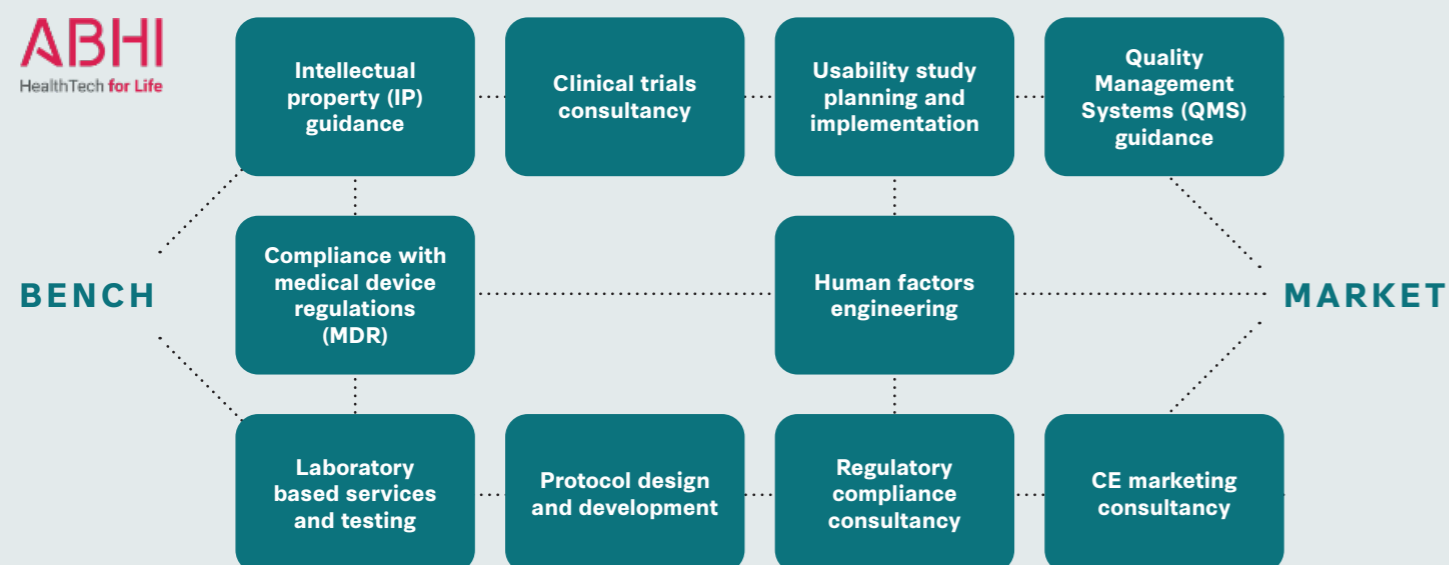
De-risking pathways for new ATMPs
Deliver efficiencies in manufacture logistics and speed to clinic/trials



Lead a national partnership working for rapid understanding of COVID-19 disease pathogenesis



National centre for testing and evaluating medical devices



PRECISION HEALTH TECHNOLOGIES ACCELERATOR

Occupying 65,000 sq ft of the first phase, No.1 BHIC is proud to welcome Precision Health Technologies Accelerator to the Campus. Delivering accelerated, data-enabled precision medicine and healthcare innovation to the patient through two commercialisation and translational hubs.

Healthcare Technologies Innovation Hub

Supporting rapid translation of healthcare tech

Providing regulatory support & technology evaluation

Incubation space for new and scaling businesses

Entrepreneurship and masters training

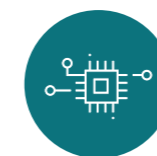
Birmingham Precision Medicine Centre

Rapid translation of new diagnostics from research to service delivery

Novel biomarker development

New "Fit for Filing" industry clinical trials hub

Developing Healthcare Data platform



Integrated Healthcare Data Platform

Understand the patient



Birmingham Precision Medicine Centre

Understanding the disease



MedTech Innovation Hub

Developing and validating the technology



**PRECISION HEALTH TECHNOLOGIES ACCELERATOR
- ANCHOR TENANTS**

Clinical Immunology Service



Professor Alex Richter

Director

CIS

The CIS team offers a unique set of skills with biomedical scientists, clinical scientists and researchers coming together to provide NHS diagnostic testing & innovation in diagnostic development.



Industry Trials Hub



Pam Kearns

Director

Cancer Research UK Clinical Trials Unit (CRCTU)
and Institute of Cancer and Genomics Sciences



Lead for PHTA Industry
Trials Hub



Offering innovative trial design,
management, delivery and data
curation of clinical trials



'Fit for Filing' capability to
support pharma, reducing costs
and accelerate path to patient

CIS will be an anchor tenant at PHTA, occupying custom built lab space providing accredited lab services and research opportunities to support the diagnosis of:



Autoimmune and neuro-
immunological disease



Primary and secondary
immunodeficiency



Blood cancers



Infections and allergy



WHY BIRMINGHAM? WHY NOW?

Birmingham is home to global businesses, major R&D facilities, innovative entrepreneurs, renowned universities and one of the youngest populations in Europe. A great place to live, work and play.

Currently, International companies investing in the UK can benefit from a fully-funded package of commercial workspace, market entry and business acceleration support, delivered by Bruntwood SciTech and available at our Innovation Birmingham campus.



Regional economy worth **£105bn**



The most employable graduates in the UK (beating those from Oxford, Cambridge, London and everywhere else)



Less than two hours by train from London, Manchester, Oxford, Nottingham, Liverpool, Leeds and Bristol



90% of the UK's population reachable with a **four hour drive**



An **international airport**



One of the **most diverse regions** in Europe with people from **190 different countries** living here



400 OFSTED 'Outstanding' schools



22 higher education establishments, 63% of which carry the UK's Teaching Excellence 'gold' ranking



8,000 acres of green space and **571 parks**, making it the UK's fourth greenest city



A hub for professional services, and home to the big 4

**DIVERSE, STABLE
POPULATION**

of almost 6m

17,320 PEOPLE

employed in life sciences
industry across the region

14,935 GRADUATES

in life sciences

**11,000 STEM
APPRENTICESHIPS**

started in 2019-20

550 COMPANIES

currently involved in the life science sector



**£94b REGIONAL
ECONOMY**

in life sciences

**LARGEST MEDICAL
DEVICES CLUSTER**

employed in life sciences
industry across the region

80 HOSPITALS

and specialist care facilities

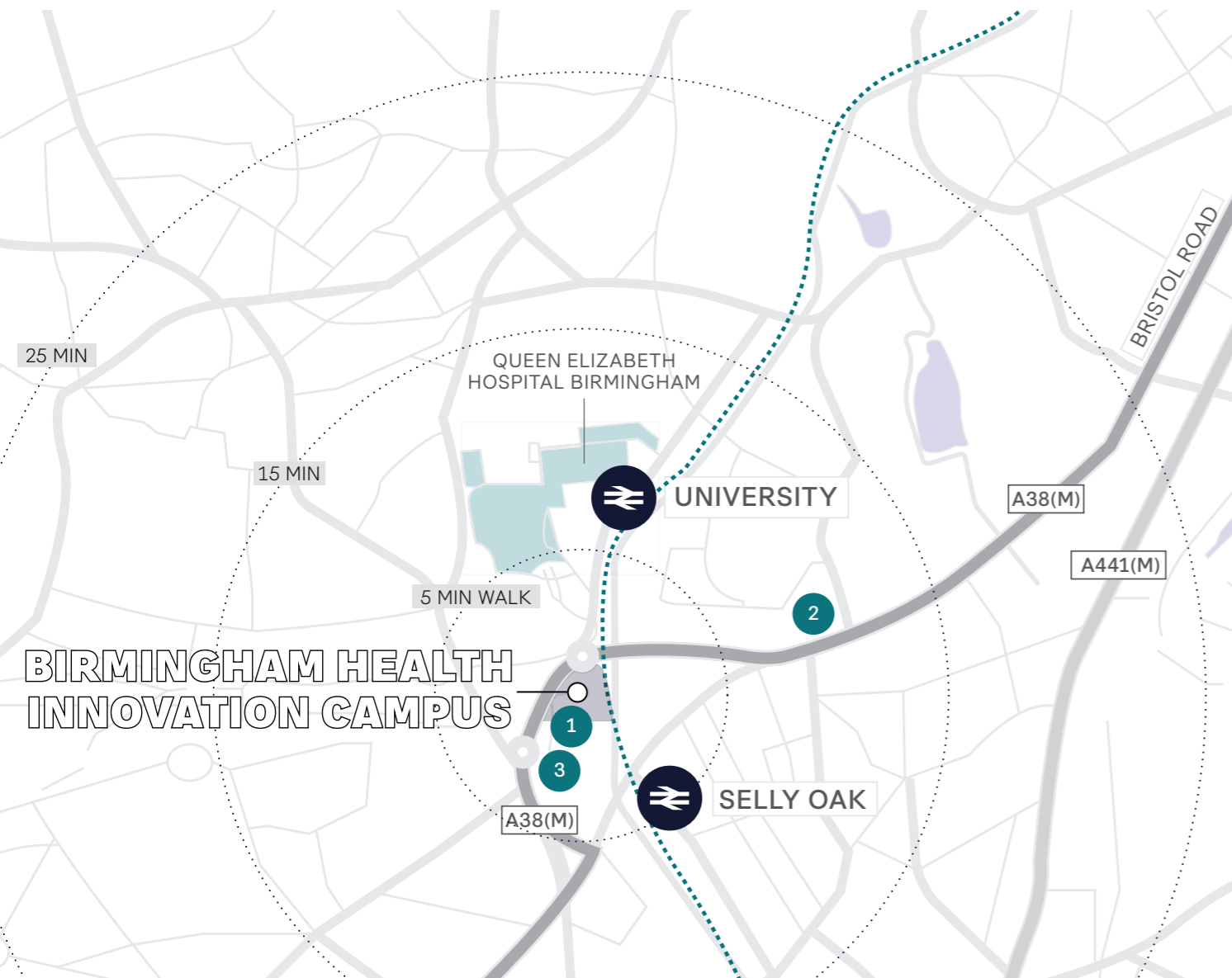
**£6.49b REGIONAL
TURNOVER**

STEM apprenticeships started in 2019-20

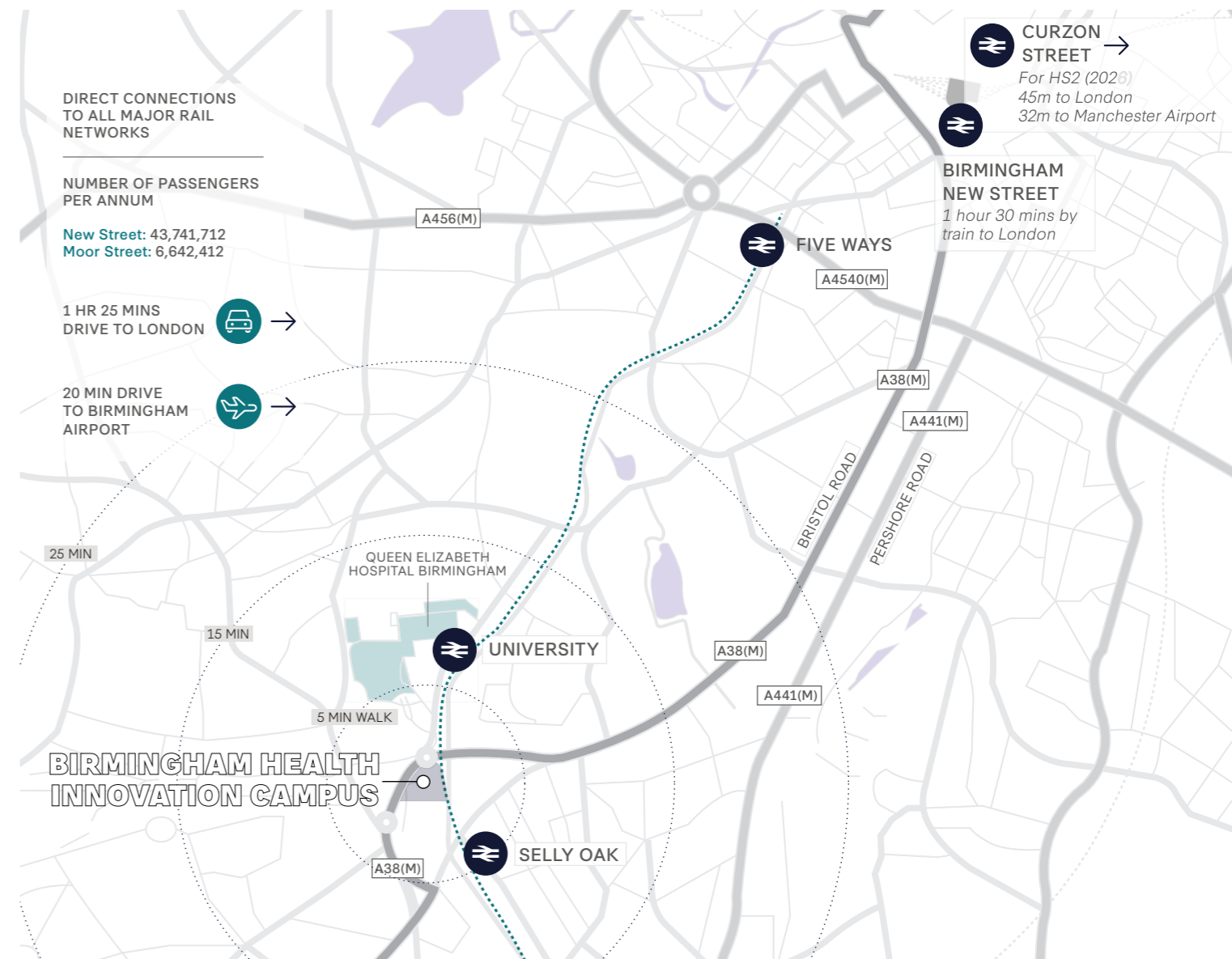
**40% INCREASE
SINCE 2005**

currently involved in the life science sector

SURROUNDING AMENITIES



GETTING HERE



KEY LOCATIONS

1 Selly Oak Shopping Park

2 UoB Sport & Fitness

Bus routes include:

11A, 20, 41, 46, 55, 61, 63, 76, 882, X21

Sainsbury's

GREGGS



3 The Gym Group

M&S
FOODHALL

Carluccio's



COŠTA

Nando's

Four trains per hour from Birmingham New Street to Selly Oak (10 mins journey)

THE LIFESTYLE

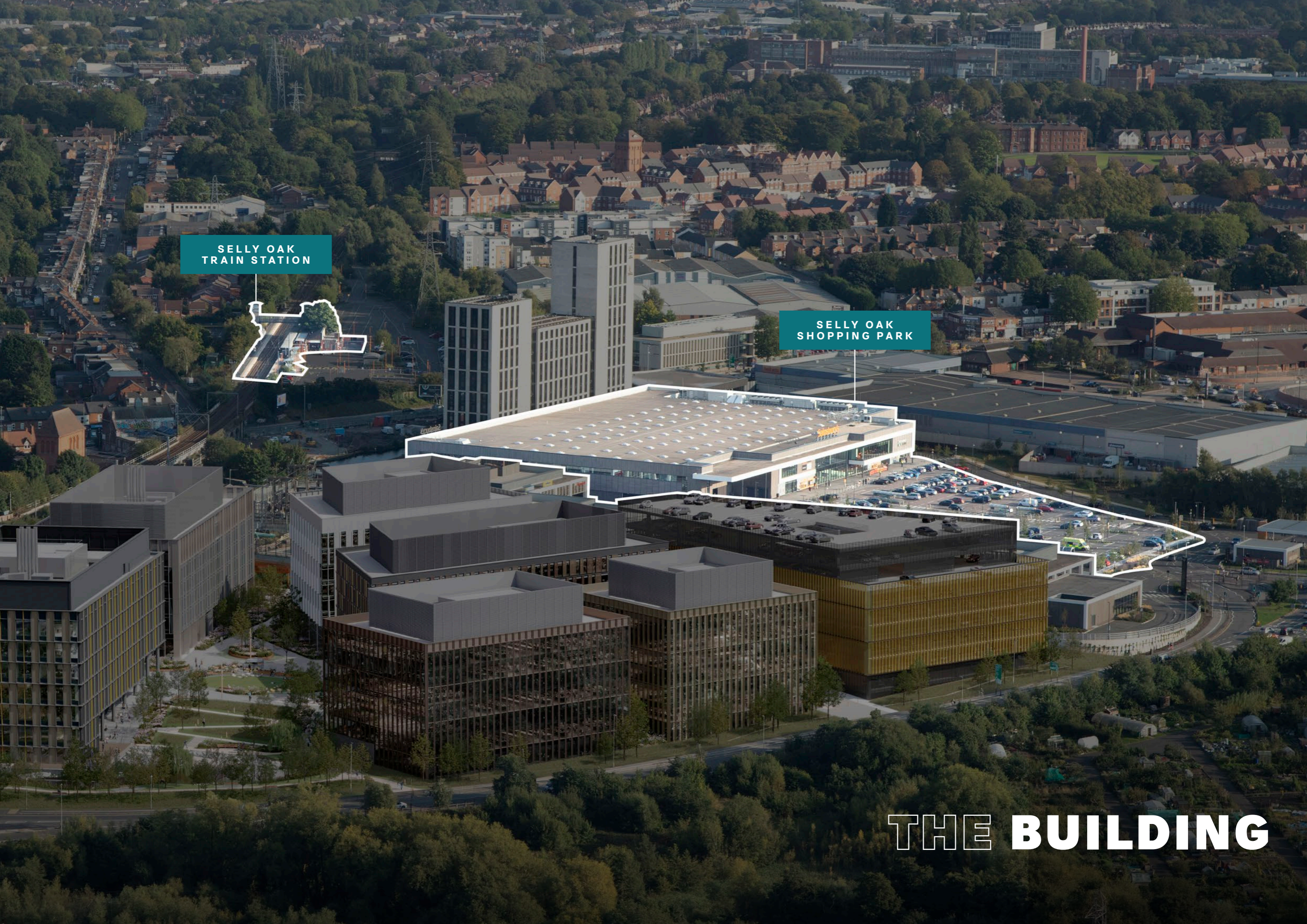
Discover excellent schools, wide open spaces and a vibrant community on the doorstep.



SELLY OAK
TRAIN STATION



SELLY OAK
SHOPPING PARK



THE BUILDING

SPECIFICATION

 EPC 'A' Rating	 Lab infrastructure available	 Campus meeting rooms	 Floor to ceiling windows
 On campus parking	 Secure cycle storage	 Showers and changing facilities	 3.4m floor to ceiling height upper floor offices with an exposed pre-cast concrete soffit and services
 Energy efficient lighting	 Event space	 24 hour fob access	 7.5m double height reception area
 Extensive external landscaping	 Dedicated loading access areas	 Campus café	 Office suites from 2,507 sq ft. (233 m ²) to 22,119 sq ft. (2,055 m ²) floorplates. 60,396 sq ft. total building

NO.1 BIRMINGHAM HEALTH INNOVATION CAMPUS



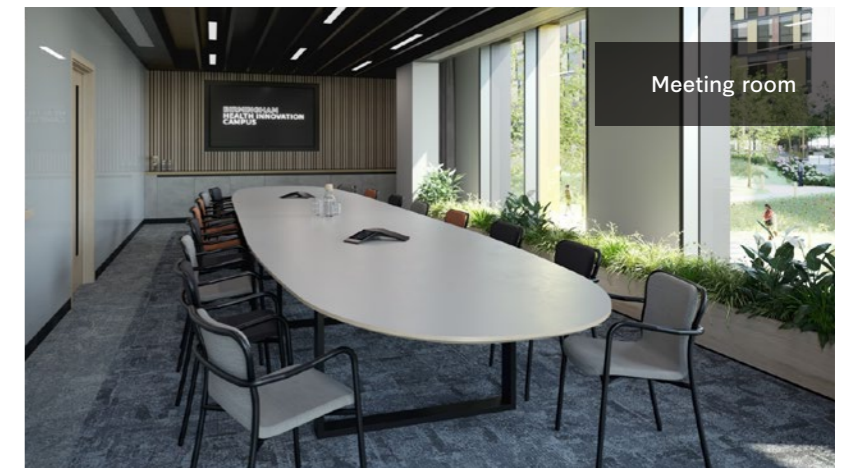
FLOORPLANS	TOTAL SQ FT
Three / Four / Five	Occupied by the University of Birmingham's Precision Health Technologies Accelerator
Two	22,119
One	21,129
Ground	9,439
Lower Ground	7,706
Total Area	60,396



Breakout meeting space



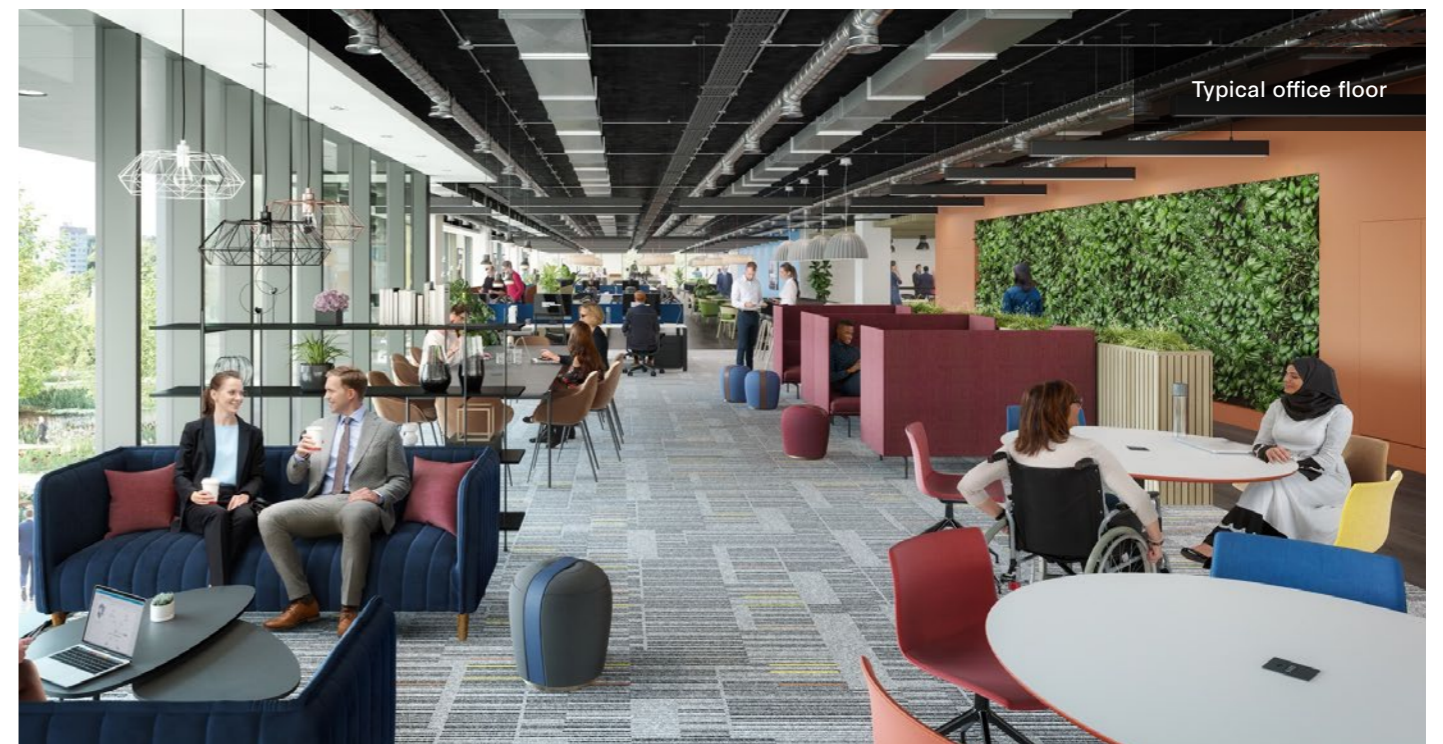
Lab space



Meeting room

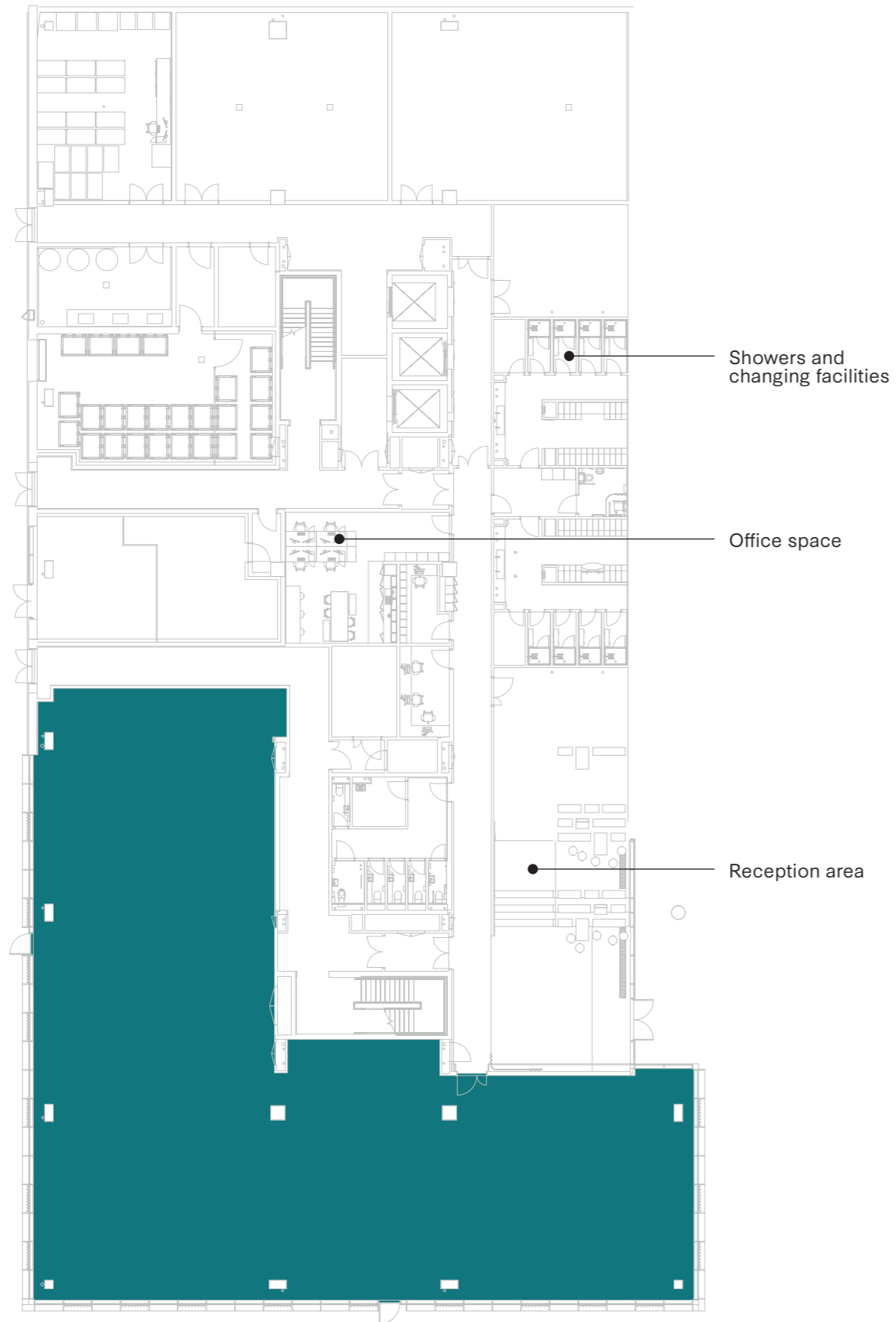


Cafe

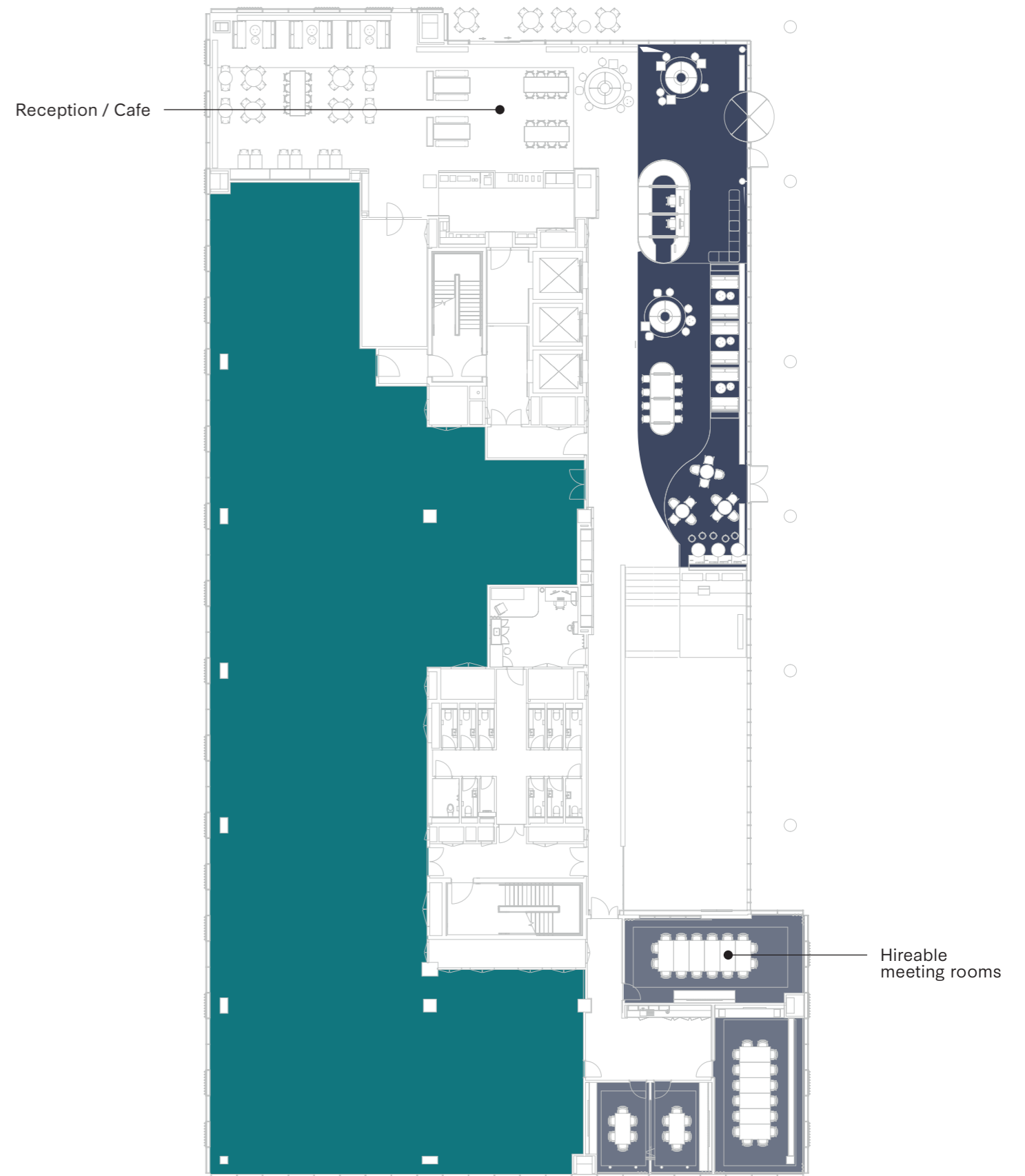


Typical office floor

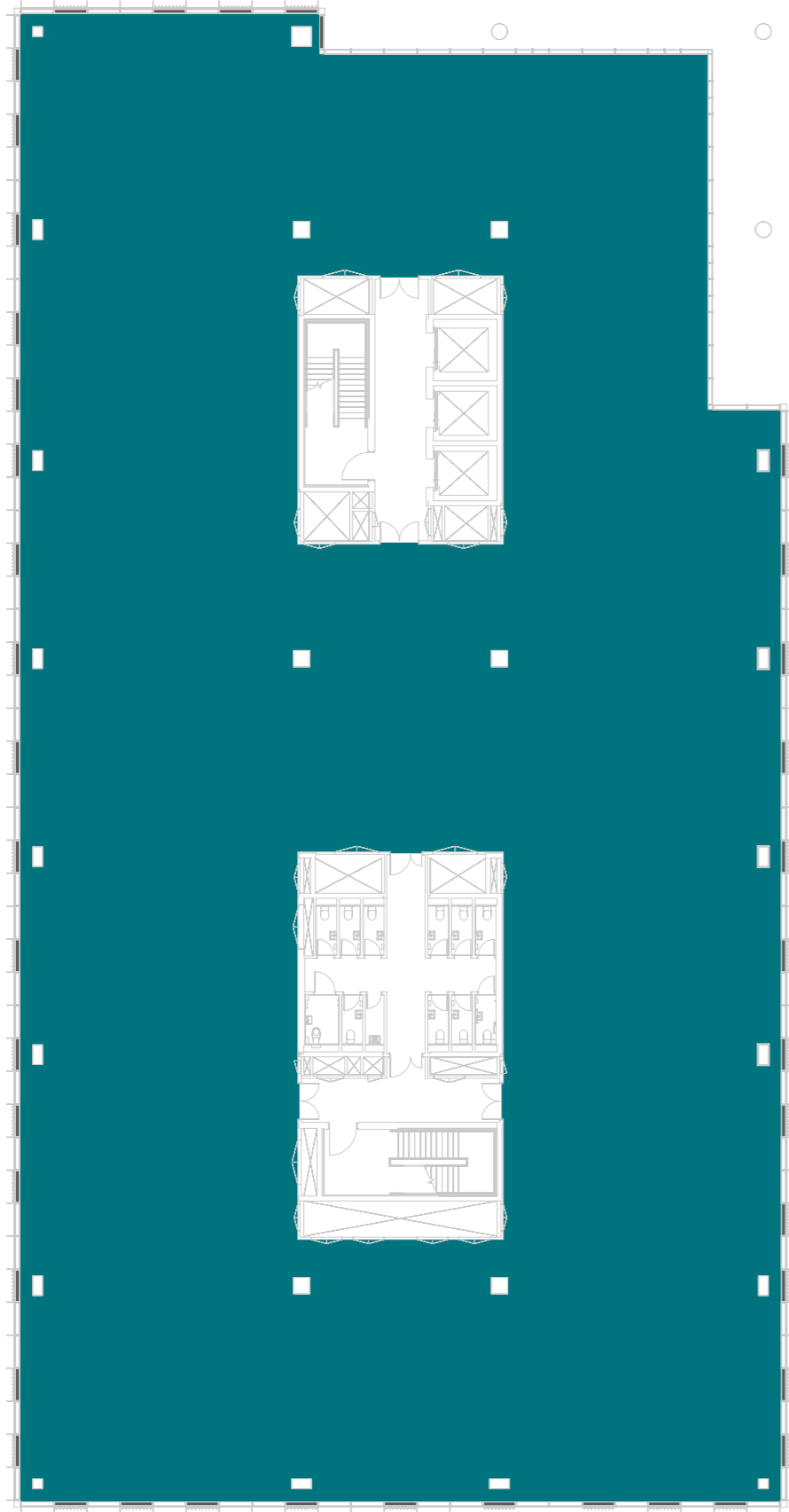
LOWER GROUND FLOOR



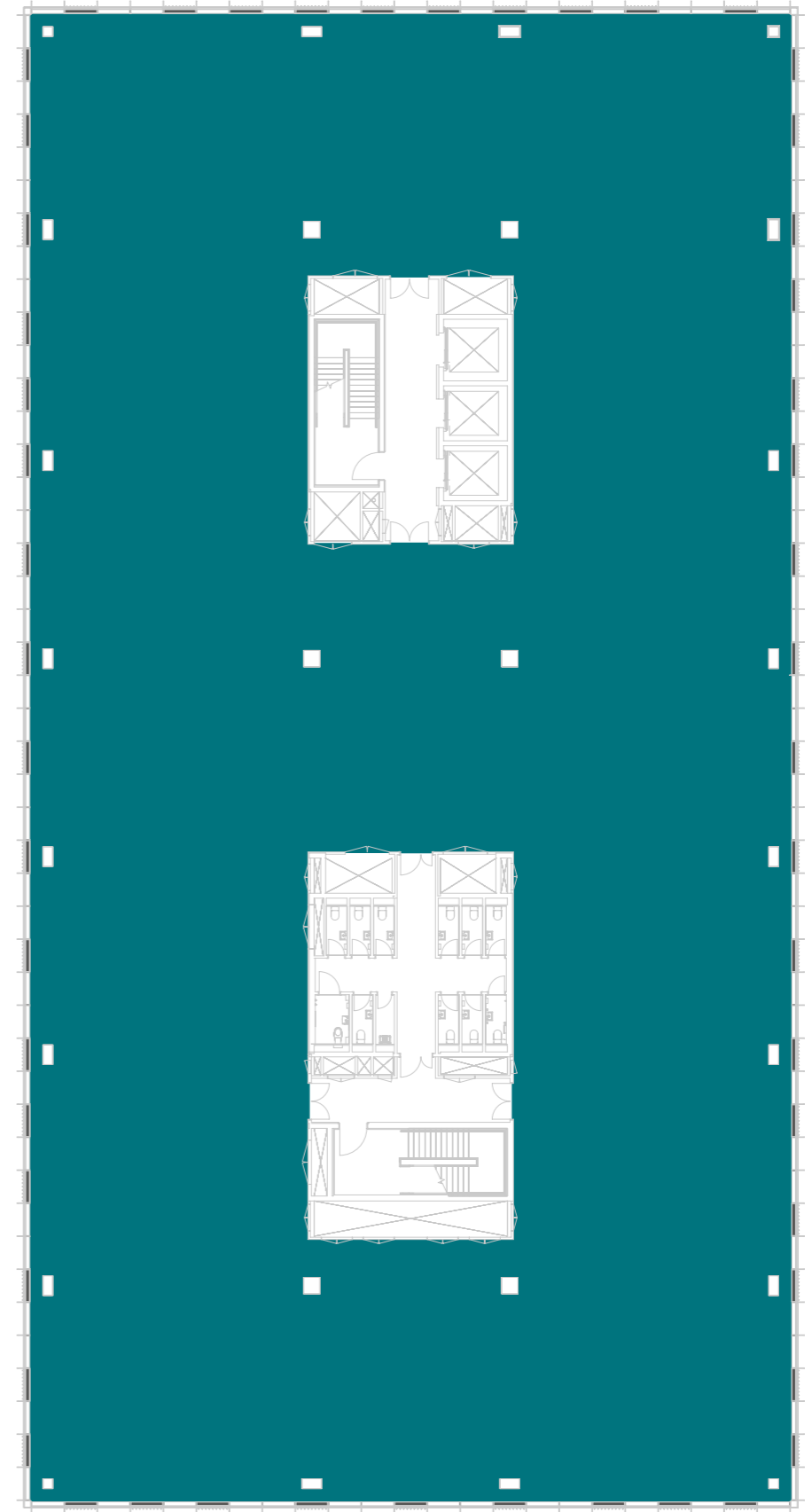
GROUND FLOOR



FIRST FLOOR



SECOND FLOOR



WHO IS BRUNTWOOD SCITECH?



AN UNRIVALLED NETWORK



FORMING AND SCALING BUSINESSES

ONCOLOGY DEVELOPMENT PROGRAMME



ACCELERATOR PROGRAMME

30+
partnerships with
Universities and
NHS Trusts

MULTIPLE
campus locations
across the UK

500
companies across
the UK campus
network



Specialist monitoring



Access to finance



Access to talent



Thriving ecosystem



Access to over 100 public,
private and academic partnerships



OUR CUSTOMERS



COLLABORATION WITH INDUSTRY

Our links to industry leading partners assist with method development, data interpretation and training, and also allows us to deliver exciting innovations.



STRATEGIC SERVICE PROVIDERS



Showcasing the latest in cell and protein analysis technologies, with onsite support from Cytiva, the Cytiva Technology Lab is continually updated to provide researchers with a powerful suite of high-end research tools.



Delivered in partnership with Waters Corporation and fully supported by an experienced team, analytical and preparative scale LCMS instrumentation are available for walk-up sample submission or session based bookings.

INNOVATION SERVICES

ONCOLOGY DEVELOPMENT PROGRAMME

A unique collaboration of global pharmaceutical and healthcare companies, research institutions and public bodies to identify and progress exciting oncology innovations that will improve the diagnostics and treatment of cancer.



Jamie Bottomley
07788 975465



Ben Thacker
07917 218244



Theo Holmes
07967 802656

Michelle Mills
07733 314585

Birmingham Health Innovation Campus,
Aston Webb Boulevard,
Selly Oak,
Birmingham,
B29 6SJ

bruntwood.co.uk/scitech

bruntwood
SciTech