



APEX HOUSE

CALTHORPE ROAD, EDGBASTON,  
BIRMINGHAM B15 1TR

**GRADE A OFFICE  
SPACE TO LET**

UP TO 35,000 SQ FT (3,250 SQ M)  
SUITES FROM 5,500 SQ FT (511 SQ M)



## THE BUILDING

Apex House is a modern office building on the edge of Birmingham city centre offering flexible space across several floors.

It occupies a prominent corner site at Five Ways island, one of the city's main arterial routes, and is at the heart of the thriving Edgbaston Village district

Located between Harborne Road and Calthorpe Road, the building offers between 5,500 and 35,000 sq ft of high-quality, flexible Grade A office accommodation within the Calthorpe Estate.

It also features a wide array of occupier benefits and will include an impressive and newly refurbished feature reception and accessible facilities.

For the active commuter, the building includes secure cycle storage and on-site shower and changing facilities which will be completed in Q2 2023..

A cycle hire and scooter hire station is also located close by, and the building also provides secure basement car parking for those who prefer to drive, and is conveniently located outside of the city's Clean Air Zone (CAZ).





## SPACE

Apex House extends to 58,000 sq ft across its basement, ground and four upper floors. It offers flexible Grade A office space to let from 5,500 sq ft up to 35,000 sq ft.

Available as part floors or whole floorplates, the space can be configured to occupier requirements.

It features full carpeting, suspended ceilings, four-pipe heating and cooling, air conditioning and LED lighting as standard throughout.

The bright and airy workspaces create an excellent environment that encourages productivity and helps meet the health and wellbeing needs of staff.

Apex House can provide fully fitted, plug and play accommodation for occupiers who may not wish to undertake their own fit out.



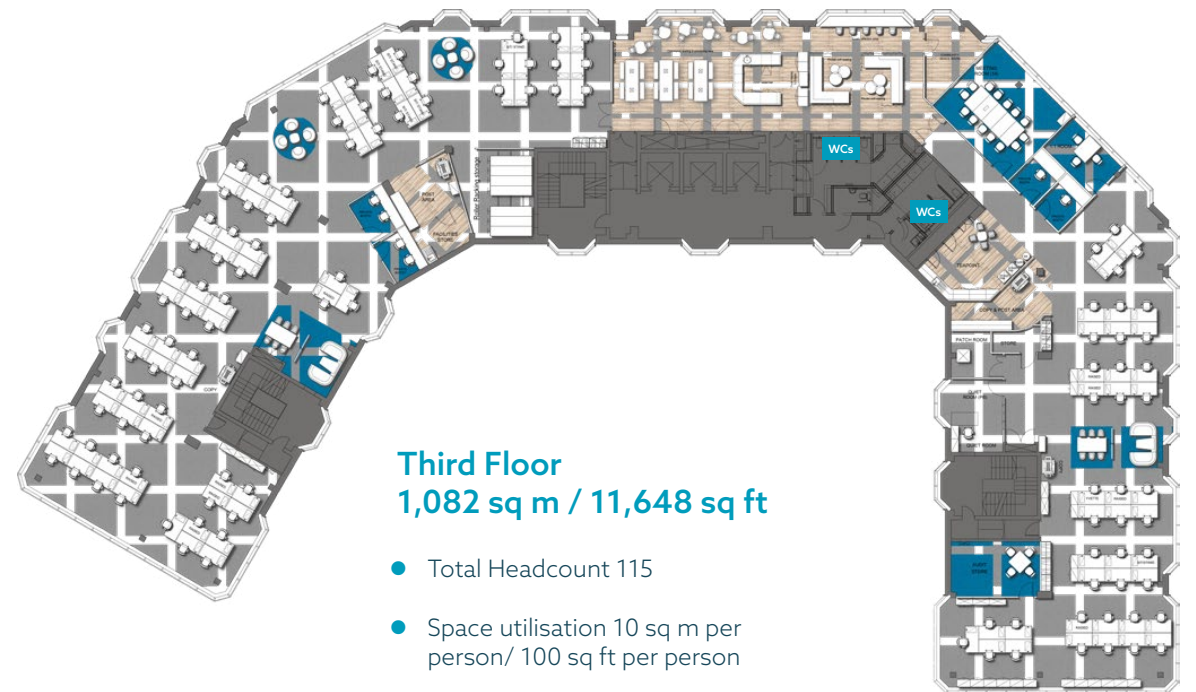
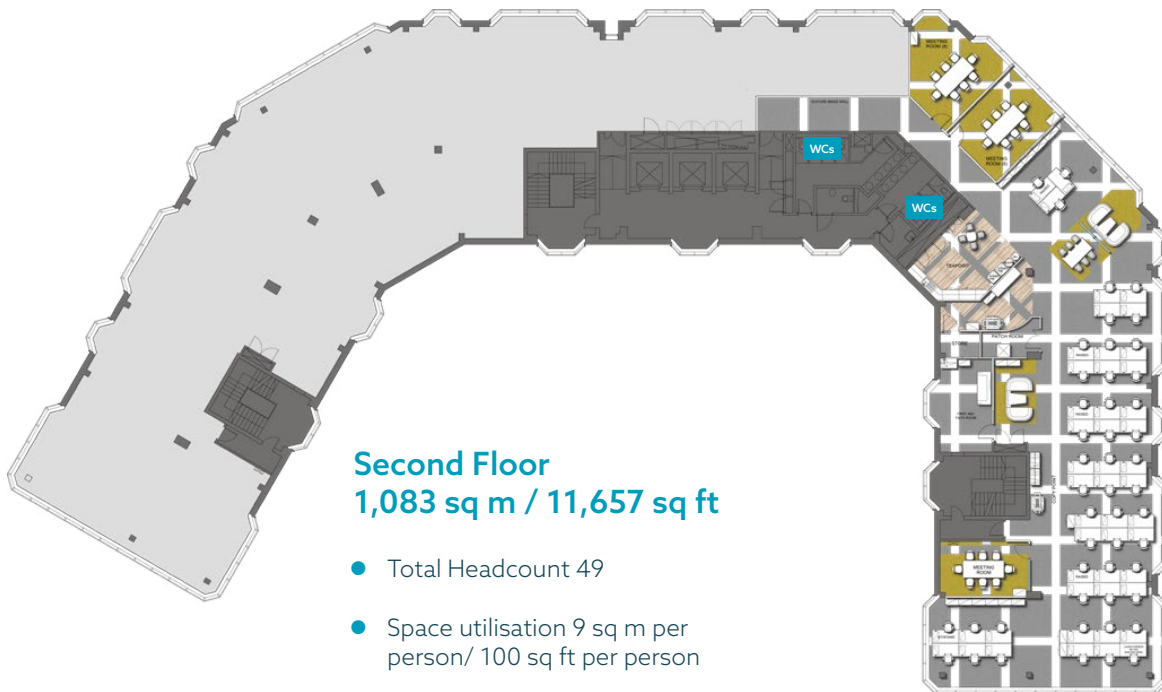




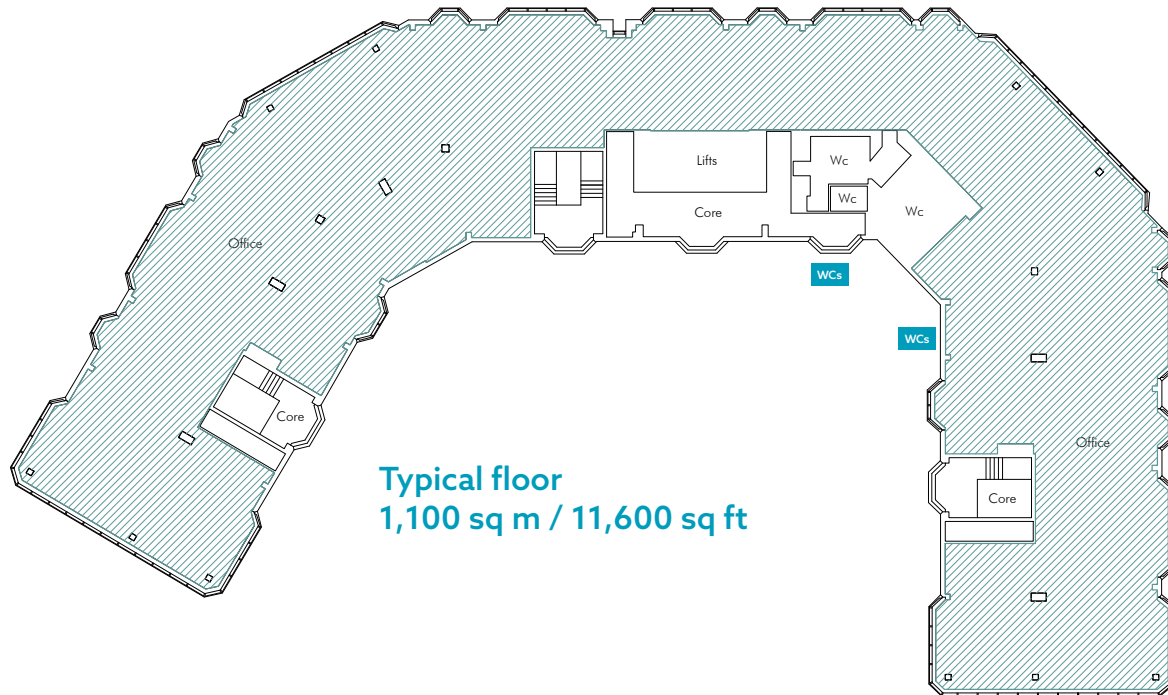
**FULLY FITTED  
PLUG AND  
PLAY OPTIONS  
AVAILABLE**

## SPACE

The space available at Apex House offers flexible and attractive solutions for your business or organisation across contiguous upper floors, allowing bespoke suites or continuous space across multiple floorplates for up to 400 people.



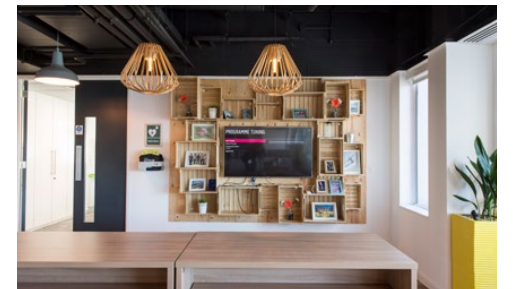
## SPACE



Typical floor  
1,100 sq m / 11,600 sq ft

## SPECIFICATION

- LED lighting
- Internal and external common area refurbishment programme to complete in Q2 2023
- Suspended ceilings
- Four pipe fan coil air conditioning
- EPC B (40)
- Fully accessed raised floor
- Dedicated male and female WCs on each floor
- Three fully accessible lifts servicing all floors
- Occupational density of 1:9 sq m
- Secure basement parking at 1:650 sq ft
- Basement cycle hub including cycle parking and shower/changing facilities





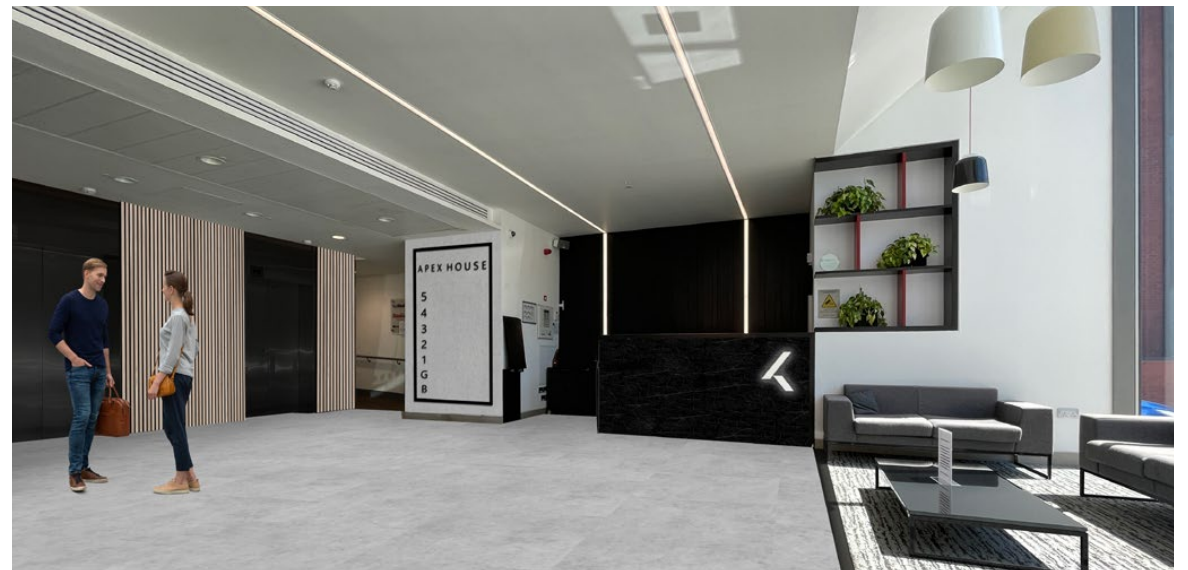
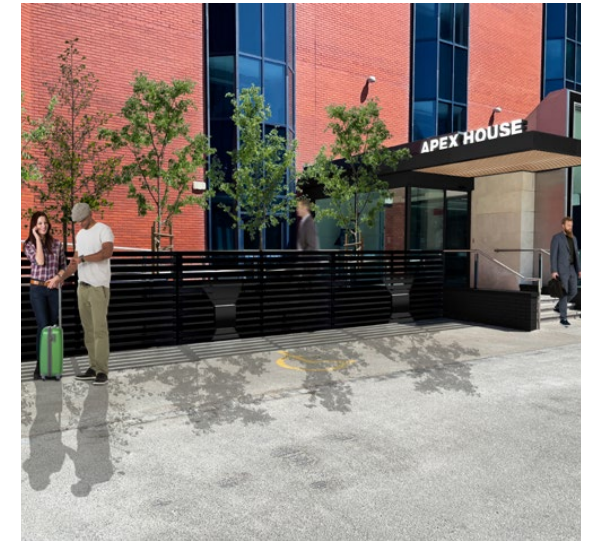


## REFURBISHMENT PROPOSALS

Ongoing improvements to Apex House are built around meeting the holistic needs of businesses and their employees.

By making more of existing strengths and highlighting the generous space available, including an ideal location, the building can help with the recruitment, retention, training and development of staff.

With welcoming and practical shared space and bespoke, modern workspace across a number of floors, Apex House offers a high standard of business accommodation coupled with plentiful amenities.



Computer generated images of proposed improvements



## AMENITIES

Apex House is located just a short walk from Birmingham's city core in Edgbaston, a flourishing commercial centre and one of the most recognisable locations in the West Midlands.

The building is part of Edgbaston Village, a vibrant mixed-use leisure and lifestyle location with a leafy, village feel full of cafes, gastro pubs and restaurants centred on Greenfield Crescent.

The area is well-renowned for its gastronomic delights, including the acclaimed Michelin-starred Simpsons restaurant, as well as a growing selection of boutique retailers.

Apex House is also superbly located to take advantage of the city's wider leisure offering including Botanical Gardens, Broad Street, the Utilita Arena, ICC and Symphony Hall, as well as Crescent Theatre and Ikon Gallery at

Brindleyplace and the Repertory Theatre and Library of Birmingham on Centenary Square.

Nearby Edgbaston Priory Club offers world-class tennis, swimming and fitness facilities, while walking along either the canal network or through Edgbaston will bring people to one of the greenest parts of the city.

Apex House truly offers the best of both worlds: the convenience and connectivity of being close to the city centre, with the exclusivity and appeal of being in one of Birmingham's most sought after neighbourhoods.







# AMENITY & CONNECTIVITY





## LOCATION

Apex House is connected from across the city and beyond, with easy access whether you commute by road, rail, bus, cycle or on foot.

Five Ways and the city's ring road provides easy access to central Birmingham and the national motorway network, with excellent links to the M6, M42, M5 and M40 all minutes away.

Locally, Apex House stands in the middle of a public transport hub with bus, rail and tram links all on the doorstep. For drivers, the building sits outside Birmingham's Clean Air Zone, and includes its own secure car parking.

For rail commuters, Five Ways railway station is less than five minutes' walk away, and offers a regular three-minute journey to Birmingham New Street station and the wider UK rail network.

The arrival of HS2 will bring journey time to London down to just 49 minutes, with Curzon Street station connected to Edgbaston by a direct

West Midlands Metro (tram) route.

As part of Edgbaston Village, Apex House shares a dedicated tram stop. The tram provides speedy links to the city centre and on to the Black Country and beyond, as well as Curzon Street, Digbeth and the city's Eastside.

Cycle routes using the local canal network can be accessed via the Worcester and Birmingham canal, just a few hundred metres away, along with canalside routes through Edgbaston to Selly Oak and south Birmingham as well as to the west of the city and Black Country in the other direction.

For those travelling further afield, Birmingham Airport is just ten miles away, and offers direct flights to over 150 destinations worldwide.



## GETTING CONNECTED

Your landlord and building operator have partnered with NCG as their preferred connectivity provider, offering pre-installed services into the building to help you get connected as quickly and seamlessly as possible.

### Quick Installation

Dedicated internet services ready to use within 15 working days

### No Wayleave

Simplified installs saving you time and money

### Dedicated Bandwidth

100Mbps up to 1Gbps fully managed service with NCG

### Available Services and Features

- Flexible contracts delivered in 10-15 working days
- Resilient connectivity options 100Mbps - 1Gbps
- Additional products including access points, routers, switching and phone systems
- On-site installation and ongoing support



**Customer Success Manager**  
**Charlotte Cox**

CharlotteC@ncg-global.com  
07939478005



**Internal Sales Director**  
**Charles Fraser**

CharlesF@ncg-global.com  
07854551780

## CONTACT



**Jonathan Ottewell**  
M: +44 (0) 7972 000150  
E: jottewell@savills.com



**Andy Riach**  
M: +44 (0) 7743 978109  
E: ariach@lsh.co.uk

**Richard Williams**  
M: +44 (0) 7468 727158  
E: rjwilliams@lsh.co.ukk

Disclaimer: Savills and LSH on their behalf and for the Vendors or Lessors of this property whose agents they are, give notice that: 1. These particulars are set out as a general outline only for guidance to intending Purchasers or Lessees, and do not constitute any part of an offer or contract. 2. Details are given without any responsibility and any intending Purchasers, Lessees or Third Parties should not rely on them as statements or representations of fact, but must satisfy themselves by inspection or otherwise as to the correctness of each of them. 3. No person in the employment of Savills or LSH has any authority to make any representation or warranty whatsoever in relation to this property. 4. Unless otherwise stated, all priced and rents are quoted exclusive of VAT. 5. Subject to Contract & Exclusive of VAT. All images shown are for illustrative purposes only.

Crafted by Core | [core-marketing.co.uk](http://core-marketing.co.uk) | 0121 232 5000 | March 2023







APEX HOUSE