

EVANS BROS.

QUALIFIED ESTATE AGENTS, VALUERS & AUCTIONEERS

Established in 1895

39 HIGH STREET, LAMPETER, CEREDIGION SA48 7BB

Tel: (01570) 422395 Fax: (01570) 423548 Website: www.evansbros.co.uk



Ffos y Ffin Llanfair Clydogau, Lampeter, Ceredigion, SA48 8LL

Asking Price £850,000

Welcome to this delightfully located and diversely appealing country property set in picturesque unspoilt countryside close to Lampeter. Set in some 10.5 acres it offers an impressive 3 bedroomed main house with garden room and carport which offers a perfect blend of traditional charm and modern comfort, making it an ideal home for those seeking a peaceful countryside retreat.

The detached 3 bedroomed cottage known as The Granary offers a peaceful sanctuary for rest and relaxation, and even has a prayer room and 3 garages, a separate purpose built studio/workshop/retreat centre. Ty Twt a separate 1 double bedroom small dwelling with kitchen and bathroom - making it an ideal retreat, holiday complex or with room for all the family.

Don't miss the chance to make this charming retreat your new home. Embrace the tranquility of rural life and create lasting memories in this beautiful countryside setting. Contact us today to arrange a viewing and experience the magic of this wonderful property for yourself.

Location



Imagine waking up to the sound of birds chirping and the gentle breeze rustling through the trees – a truly idyllic way to start your day. Delightfully situated in the foothills of the Cambrian mountains amidst rolling countryside, being secluded yet not remote, conveniently only some 15 minutes from the university and market town of Lampeter that provides a good range of everyday facilities & amenities including large supermarkets such as Sainsburys and Co-op.

Description



'Solice for the Soul' - this really does describe this wonderful property and its location. The attractive residential appeal of the main residence together with the flexibility of the extra 3 bedroomed self contained accommodation of the cottage and this superb offering of the studio along with the potential of the garden room and adjoining workshop and the 1 bedroom dwelling known as Ty Twt, make this a diversely appealing property suitable for a range of purchasers. The property is serviced via mains electricity, private water and private drainage with oil fired central heating to the main house and The Granary together with super fast fibre broadband connected.

THE MAIN RESIDENCE - FFOS Y FFIN



There is the potential of dividing the main residence in to two independent units if so required with the property having two staircases to add further flexibility to this property, and is externally insulated.

The accommodation provides the following: _

Front Entrance Door to -

Hallway



An inviting space with a quarry tile floor

Cloakroom off



Having w.c., and wash hand basin with hot water heater

Kitchen/Dining Room

22'10" x 14'5" (6.96m x 4.39m)



The heart of this lovely home with a wooden floor and tongue and groove ceiling, extensive range of kitchen units at base and wall level incorporating ceramic sink unit, space for Range with cooker hood over, breakfast bar

Dining Area



with wood burning stove and storage cupboard off

Side Sun Lounge



With French doors to side, tongue and groove ceiling, front window

Utility Area

Accessed via steps up from kitchen with lobby having rear entrance door -

Utility Room

10'4" x 7'9" (3.15m x 2.36m)

With plumbing and space for automatic washing machine, tumble dryer, freezer space, side window.

Off Hallway - Office
5'2" x 4'5" (1.57m x 1.35m)



A lovely snug/study/working area

Further Main Office Study Area
15'7" x 8'1" (max) (4.75m x 2.46m (max))



With recessed storage area, front window, this leads in to the -

Feature Living Area
14'7" x 19'2" overall (4.45m x 5.84m overall)



having a mezzanine over with separate entrance door.

First Floor - Mezzanine Balcony



With 3 velux roof windows, double aspect windows, creating a light, airy space, Door to - Bedroom 3

Bedroom 3

14'7" x 7'5" (4.45m x 2.26m)



2 Velux roof windows

Through Bedroom 2

14'6" x 8'10" (4.42m x 2.69m)



With front window, door to -

Ensuite Cloakroom

With w.c., and wash hand basin, velux roof window, door to -

Main Bedroom 1

14'7" x 14'1" (4.45m x 4.29m)



Also accessed via independent staircase from kitchen area, having front window, rear velux window, exposed 'A' frames with recessed wardrobe and corner storage cupboard, door to - Landing

Landing



Staircase down to kitchen/living room, Door to Bathroom, and Bedroom 1

Bathroom



With a 3-piece suite comprising of a bath, spa shower, wash hand basin, w.c.,

Garden Room

21'3" x 16'10" (6.48m x 5.13m)



to the side of the main residence is a fantastic Mediterranean styled garden room , accessed via double opening French doors with further side door. This has a high ceiling height making it a great room for entertaining

Garden Room Internal



Garden Room Internal



Adj Car Port

23'3" x 15'9" (7.09m x 4.80m)

A useful storage space or again in our opinion with conversion potential (subject to planning)

THE GRANARY



Set across in the lower garden from the main residence is an attractive detached 3 bedroom self contained cottage with a -

Independently Accessed Prayer Room

11'10" x 11'6"



Kitchen/Dining Room

16'10" x 11'10" (5.13m x 3.61m)



With sliding patio doors to rear having exposed pine flooring, beamed ceiling, range of base units incorporating single drainer sink unit, fridge, fridge freezer, lpg cooker point, plumbing and space for automatic washing machine, door to -

THE GRANARY



Door to - bathroom and kitchen

Main Bedroom

13'9" x 11'10" (4.19m x 3.61m)



Rear sliding patio doors to take advantage of the views

Bathroom



With oil fired central heating boiler, bath having shower unit over, wash hand basin, toilet, front window, extractor fan

Living Room/Dinning Room

25'4" x 11'1" (7.72m x 3.38m)



A large room with beamed ceiling, pine flooring, feature wood burning stove, doors to bedroom 2 and 3

Bedroom 3

9'9" x 9'3" (2.74m x 2.74m x 2.82m)



Front window, exposed pine flooring , beamed ceiling.

Bedroom 2

15'7" x 9'3" (4.75m x 2.82m)



Pine flooring, beamed ceiling,

STUDIO/YOGA/RETREAT BUILDING

59.4 x 23.6 (17.98m.1.22m x 7.01m.1.83m)



This is a great detached timber built building offering great amount of potential either as a studio or gym etc.

Studio/Yoga area

39'6" x 23'6" (12.04m x 7.16m)



, having an open vaulted ceiling and concreted floor with seven windows to allow plenty of light in to this fantastic area, door to therapy room

Adjoining Therapy Room
19'8" x 18'1" (5.99m x 5.51m)



With base units incorporating single drainer sink unit, door to

Rear Workshop Area
19'8" x 7'7" (5.99m x 2.31m)

With double doors to allow access for garden machinery etc.

TY TWT:



Set away from the main homestead is a lovely home styled cottage, currently used as a holiday let offering open plan double bedroom accommodation with kitchen facilities having base unit, single drainer sink unit. This is a light and welcoming accommodation with four sky lights to the front and also has a bathroom with bath, with shower over, wash hand basin, toilet and lpg boiler. This provides a great income generating potential from a glamping style opportunity.

Ty Twt Internal



Ty Twt Bathroom



EXTERNALLY



The property is approached via private driveway leading with ample parking and turning space, the property boasts a lovely garden where you can enjoy al fresco dining on the decking overlooking the lower garden or simply soak up the sunshine

on a lazy afternoon together with wooded areas, a pond, paddock and stream boundary with the option of purchasing more land if required.

The surrounding picturesque countryside offers ample opportunities for outdoor activities, as well as being a haven for wildlife which you can enjoy from the impressive raised decked terrace to the front of the main house.

LAND



The property stands in a nice wooded area surrounded by mature trees, being a haven for wildlife and is initially offered with some 10.5 acres including conservation areas, ponds and paddock, having a stream boundary with the option of a further 20.5 acres a total of 31 acres if required.

The area is renowned for its wildlife being located within a red squirrel conservation area and also we understand with work having been carried out to investigate the water vole population of the Nant Clywedog Uchaf being a tributary of the Teifi river, that is part of the property. The area is also species rich in respect of birds with red kites, buzzards, wood peckers amongst other species regularly seen in the area.

Optional Land

There is the option of purchasing a further approximately 20.5 acres of mixed pasture and woodland (price by negotiation).

Council Tax Band:

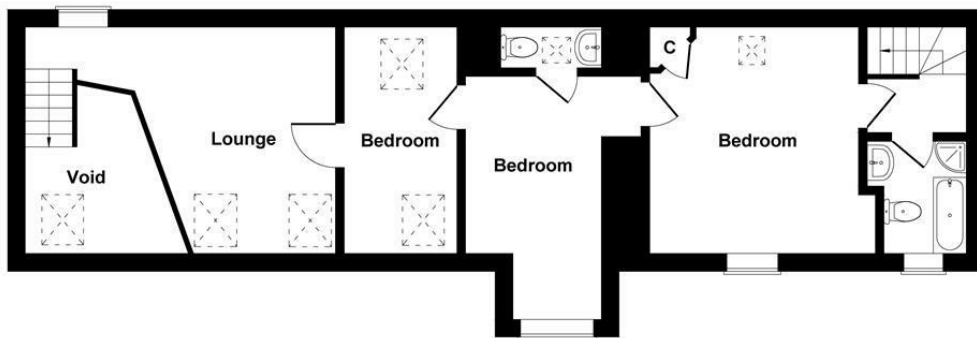
Main Residence - Band D - amount payable £2104

The Granary - This is currently assessed as a holiday cottage with business rates Rateable Value £5,600 which qualifies for small business rates relief

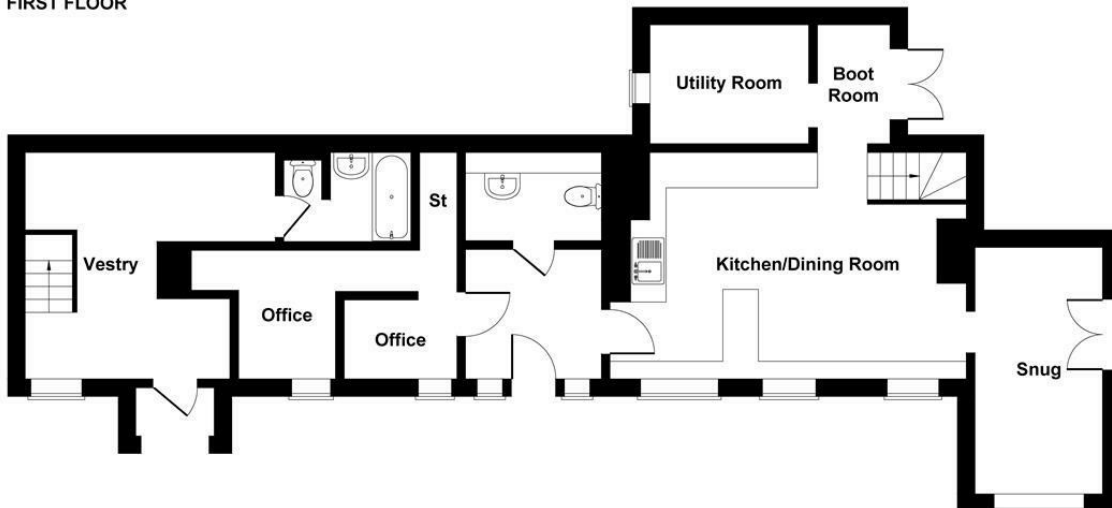
Directions

What3words: banana.hogs.deflated

Ffosyffin Llanfair Clydogau



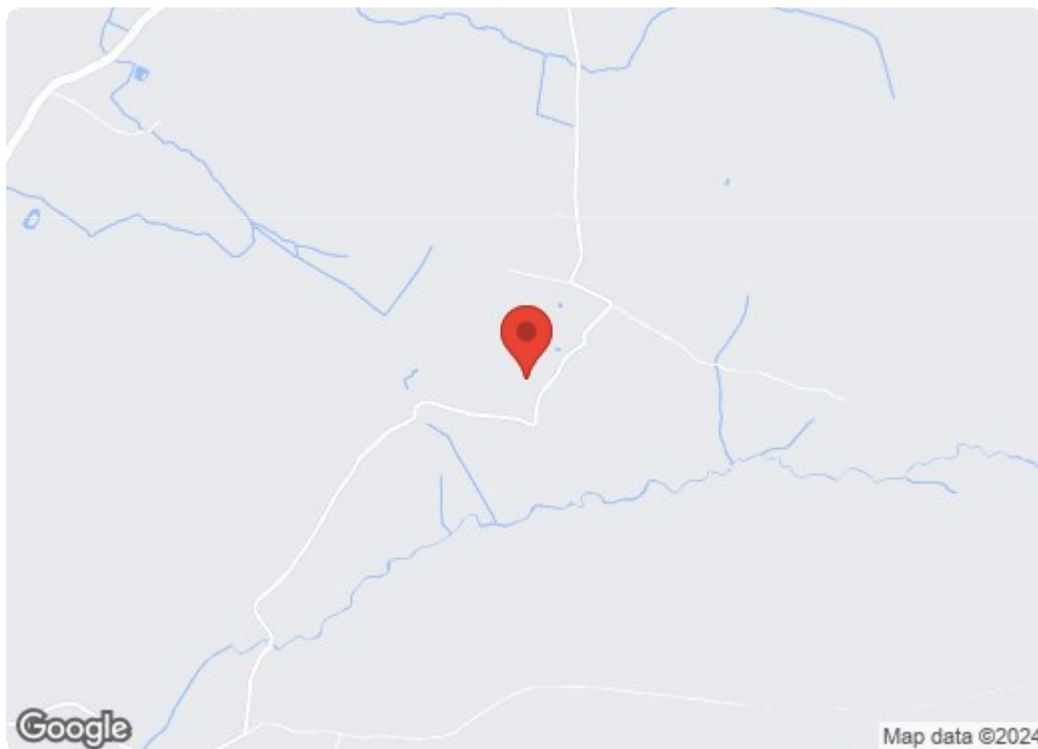
FIRST FLOOR



GROUND FLOOR

SKETCH PLAN FOR ILLUSTRATIVE PURPOSES ONLY
 All measurements walls, doors, windows, fittings and appliances, their sizes and locations, are approximate only. They cannot be regarded as being a representation by the seller, nor their agent.

Produced by Potterplans Ltd. 2024



Energy Efficiency Rating		
	Current	Potential
Very energy efficient - lower running costs		
(92 plus) A		83
(81-91) B		
(69-80) C		
(55-68) D	68	
(39-54) E		
(21-38) F		
(1-20) G		
Not energy efficient - higher running costs		
England & Wales		EU Directive 2002/91/EC
Environmental Impact (CO ₂) Rating		
	Current	Potential
Very environmentally friendly - lower CO ₂ emissions		
(92 plus) A		
(81-91) B		
(69-80) C		
(55-68) D		
(39-54) E		
(21-38) F		
(1-20) G		
Not environmentally friendly - higher CO ₂ emissions		
England & Wales		EU Directive 2002/91/EC



5 NOTT SQUARE, **CARMARTHEN**,
 CARMARTHENSHIRE, SA31 1PG
Tel: (01267) 236611



MART OFFICE, **LLANYBYDDER**,
 CEREDIGION, SA40 9UE
Tel: (01570) 480444



1 MARKET STREET, **ABERAERON**,
 CEREDIGION, SA46 0AS
Tel: (01545) 570462

Partners Evans Brothers Ltd, Mr D.T.H Evans F.R.I.C.S., Mr E.J. Cambell Evans M.R.I.C.S., Mr Mark R. Evans M.R.I.C.S.,