



PERIOD
HOMES

Rectory Farm House, Main Road, Danbury. CM3 4DL
£1,300,000

Rectory Farm House, 93 Main Road

Danbury, Chelmsford

This exceptional detached home is a rare opportunity to own a piece of Danbury's history. Dating back to the 19th Century and Grade II Listed, it offers almost 4,000 sq ft of living space
Council Tax band: G

Tenure: Freehold





Rectory Farm House, 93 Main Road

Danbury, Chelmsford

This exceptional detached home is a rare opportunity to own a piece of Danbury's history. Dating back to the 19th Century and Grade II Listed, it offers almost 4,000 sq ft of living space across a thoughtfully renovated interior. Every corner is brimming with period character, from high ceilings and exposed beams to charming fireplaces, balanced with stylish modern finishes. The flexible layout includes five reception rooms, four double bedrooms, and three bathrooms, making it perfect for both everyday family living and grand entertaining.

Positioned proudly in the heart of Danbury village, the home enjoys a setting that blends heritage charm with modern convenience. Step outside to discover scenic countryside walks, traditional village pubs, and a friendly community atmosphere, all while being within walking distance of the village centre. Well-regarded schools are close by, making it an ideal choice for families, and road links provide easy access to Chelmsford, the A12, and beyond.

On the ground floor, a grand hallway sets the tone. To one side, a large living room with open fireplace and garden views offers a welcoming space, while the impressive games room with bar is perfect for entertaining. A snug and a WC sit nearby, and at the heart of the home, the open plan kitchen/dining room opens via bi-fold doors to a sun-soaked patio. Two utility rooms and a further reception room complete the ground floor. Upstairs, the main staircase leads









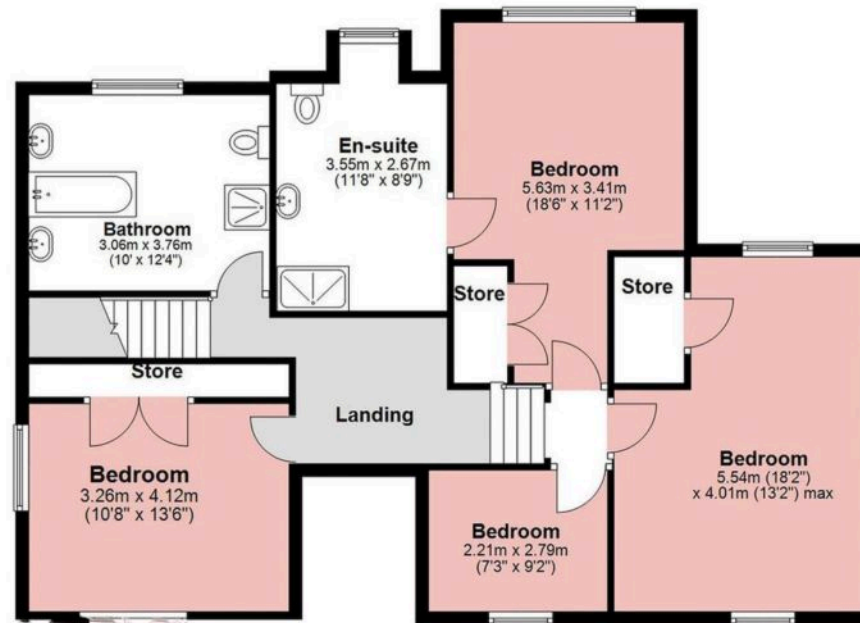
Ground Floor

Approx. 163.5 sq. metres (1759.4 sq. feet)



First Floor

Approx. 97.9 sq. metres (1053.4 sq. feet)



About Us

From charming cottages to country estates, all our homes have a story to tell. 'Period Homes' is one of a kind, an agency dedicated to the sale of character and period properties across Essex.

If you would like to buy a period home but you have a modern home to sell first, we can assist via our sister company, Walkers, which just so happens to have been voted Britain's Best Estate Agency in the British Property Awards. That way, both elements of your move are in the very best of hands.

Get In Touch



Browse Properties



PERIOD
HOMES

Pst... Have you heard of
discreet marketing?

Many people lose out on their dream home to someone in a better position.

Often, it is because they have delayed putting their house on the market, preferring to find somewhere first and then sell.

That is why we have innovated a totally unique and high confidential moving home solution to put you in a competitive position.

Let us find you a buyer without any advertising or pressure and without the neighbours knowing.

Your secret is safe with us...

Get in touch for a
complimentary valuation.

Looking To Sell Or Let Your Home?

Book your free valuation to see how much your home is worth.



Contact Us
01245 206000



Our Website
periodhomes.co.uk



Our Address

The Spinney, 121 Main Rd, Danbury,
Chelmsford CM3 4DL

