



Llangattock Court offers in excess of £265,000

- Ground Floor Apartment
- Close Proximity To Town
- Two Bedrooms (One En-Suite)
- Allocated Parking Space
- Communal Garden Area
- EPC Rating: B



 2  2  1



About the property

Modern ground floor apartment within close proximity to Town. Well presented and comfortably proportioned accommodation, Convenient allocated parking space. Communal garden seating area.

Much sought after ground floor apartment on the edge of Town, offering close proximity to central local amenities. The property benefits from a share of the Freehold. Well proportioned accommodation, with modern, tastefully decorated finish, including dimmer switches. Approached via the communal electronic front door, opens into the reception hall, which provides access to the apartment. The accommodation comprises; Sizeable 'L' shaped Inner Hallway having superb walk-in storage cupboard. Doors to following: Impressive 20ft length open plan Sitting Room/Dining and Kitchen area. Comfortable Living area with feature full height corner glazed panel and additional window to front aspect. The modern Kitchen area is fitted with a range of base and wall mounted units incorporating hob, oven, dishwasher and fridge/freezer, window to front. The principal Bedroom including wardrobe, benefits from an Ensuite Shower Room. The main Bathroom has a three piece suite. Secondary Bedroom, benefits from wardrobes and also has a window to side aspect. The property enjoys an allocated parking space, with the main carpark having three visitor spaces, along with pleasant seating areas within the communal grounds mainly set to the rear of the building.





Accommodation

Entrance Hall

Sitting/Dining Room

15' 6" x 13' 7" (4.72m x 4.14m)

Kitchen Area

13' 2" x 7' (4.01m x 2.13m)

Bedroom One

12' 3" x 10' 8" (3.73m x 3.25m)

Inc wardrobe

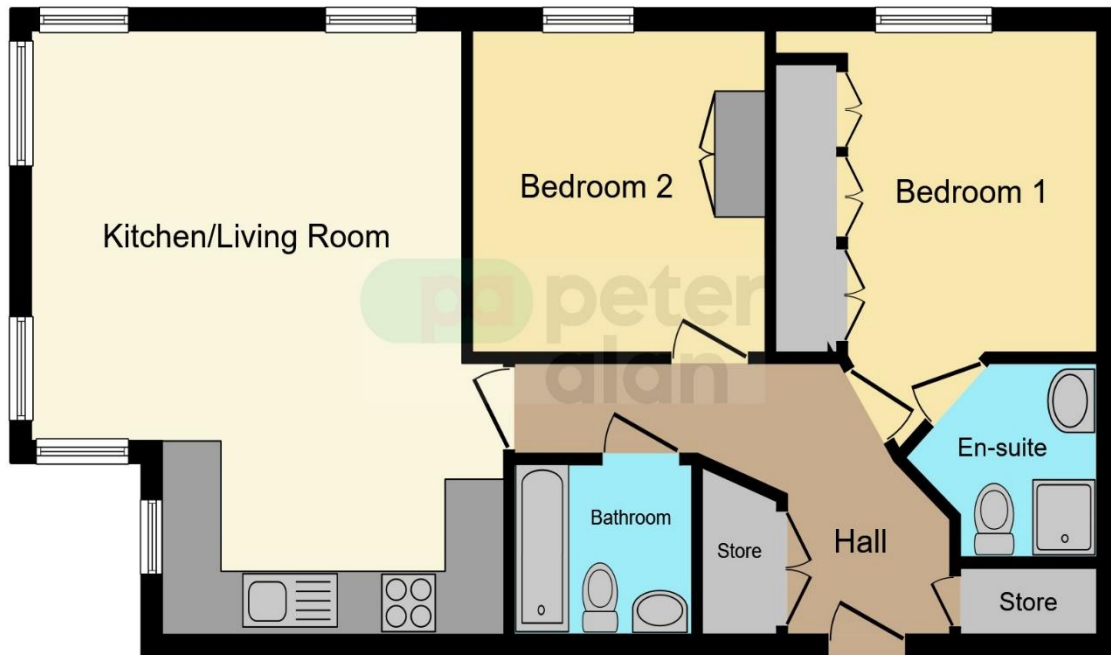
Ensuite Shower Room

Bedroom Two

10' 8" x 9' 5" (3.25m x 2.87m)

Bathroom

Floorplan



This floor plan is for illustrative purposes only. It is not drawn to scale. Any measurements, floor areas (including any total floor area), openings and orientation are approximate. No details are guaranteed, they cannot be relied upon for any purpose and they do not form part of any agreement. No liability is taken for any error, omission or misstatement. A party must rely upon its own inspection(s). Powered by www.focalagent.com

Important Information

Note while we endeavour to make our sales details accurate and reliable, if there is any point which is of particular interest to you, please contact the office and we will be pleased to confirm the position for you. We have not personally tested any apparatus, equipment, fixtures, fittings or services and cannot verify they are in working order or fit for their purposes. Nothing in these particulars is intended to indicate that carpets or curtains, furnishings or fittings, electrical goods (whether wired or not). Gas fires or light fittings or any other fixtures not expressly included form part of the property offered for sale. This computer generated Floorplan, if applicable, is intended as a general guide to the layout and design of the property. It is not to scale and should not be relied upon for dimensions. Tenure: We cannot confirm the tenure of the property as we have not had access to the legal documents. The buyer is advised to obtain verification from their solicitor or surveyor.

Peter Alan Limited is registered in England and Wales under company number 2073153, Registered Office is Cumbria House, 16-20 Hockliffe Street, Leighton Buzzard, Bedfordshire, LU7 1GN. VAT Registration Number is 500 2481 05. For activities relating to regulated mortgages and non-investment insurance contracts, Peter Alan Limited is an appointed representative of Connells Limited which is authorised and regulated by the Financial Conduct Authority. Connells Limited's Financial Services Register number is 302221. Most buy-to-let