



Hyam Court Glendower Offers in the Region of £160,000

- Desirable Town centre location
- Well proportioned accommodation
- Modernised interior and benefit of Garage
- Council Tax D
- EPC Rating: E



 2  1  1

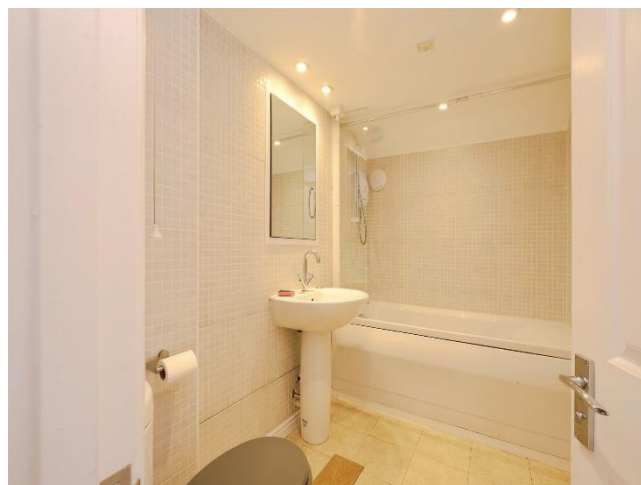


About the property

Much sought upper floor apartment, enjoying distant views - conveniently situated within the Town Centre, with garage. Well maintained both externally and internally with modernised features. Available immediately, with no onward chain.

Forming part of the Monmouth Heritage Trail, the historic building, previously Hyam's Mineral Water Works was established in 1866 by leading figure in the nineteenth century known as Thomas E Hyam. The building was the manufacturing site of soda water, lemonade and ginger beer. Having changed hands, then closing in the 1960's, it was converted in the early 1990's. The building has continually been well maintained and remains a desirable and convenient location just off the High Street.

Approached via staircase to the upper floor apartment, the accommodation comprises; Entrance Hall with storage cupboard. Doors to following; impressive Living Room incorporating a Dining Area. Attractive vaulted ceiling with exposed timber framework, enhancing the character of the room. Opening through to stylish modern fitted Kitchen, with good views beyond the rooftops. Two well proportioned Bedrooms with rear views across Chippenham Fields. Bathroom and modern electric heaters. A particular feature of the property is the Garage with power and lighting, which is situated to the rear of the building within the attractive courtyard. There is also a useful Bin store. Available for viewing with no onward chain.





Accommodation

Entrance Hall

Sitting Room with Dining Area

19' 10" x 11' 11" (6.05m x 3.63m)

Kitchen

9' 5" x 6' (2.87m x 1.83m)

Inner Hall

Bedroom One

13' 1" x 11' 8" (3.99m x 3.56m)

Bedroom Two

11' 9" x 8' 9" (3.58m x 2.67m)

Bathroom

Outside

Garage

15' 5" x 7' 11" (4.70m x 2.41m)

Floorplan



This floor plan is for illustrative purposes only. It is not drawn to scale. Any measurements, floor areas (including any total floor area), openings and orientation are approximate. No details are guaranteed, they cannot be relied upon for any purpose and they do not form part of any agreement. No liability is taken for any error, omission or misstatement. A party must rely upon its own inspection(s). Powered by www.focalagent.com

Important Information

Note while we endeavour to make our sales details accurate and reliable, if there is any point which is of particular interest to you, please contact the office and we will be pleased to confirm the position for you. We have not personally tested any apparatus, equipment, fixtures, fittings or services and cannot verify they are in working order or fit for their purposes. Nothing in these particulars is intended to indicate that carpets or curtains, furnishings or fittings, electrical goods (whether wired or not). Gas fires or light fittings or any other fixtures not expressly included form part of the property offered for sale. This computer generated Floorplan, if applicable, is intended as a general guide to the layout and design of the property. It is not to scale and should not be relied upon for dimensions. Tenure: We cannot confirm the tenure of the property as we have not had access to the legal documents. The buyer is advised to obtain verification from their solicitor or surveyor.

Peter Alan Limited is registered in England and Wales under company number 2073153, Registered Office is Cumbria House, 16-20 Hockliffe Street, Leighton Buzzard, Bedfordshire, LU7 1GN. VAT Registration Number is 500 2481 05. For activities relating to regulated mortgages and non-investment insurance contracts, Peter Alan Limited is an appointed representative of Connells Limited which is authorised and regulated by the Financial Conduct Authority. Connells Limited's Financial Services Register number is 302221. Most buy-to-let