



## West View

offers in the region of £250,000

- Available with no onward chain
- Well maintained throughout
- Kitchen with Dining Room Area
- Integral garage and driveway parking
- Distant views to front aspect
- EPC Rating: D



 3  1  2





## About the property

Set in a pleasant cul-de-Sac location, with nearby local amenities such as schools, shops and children's play area. Well presented accommodation, open plan Kitchen with Dining area leading out to lawned garden and attached garage.

Set towards the end of a pleasant cul-de-sac location, enjoying nearby local amenities such as schools, shops and family play areas. The well presented property enjoys a comfortable design with easy layout. Benefitting from an attached Garage and driveway parking, alongside the front lawn. Internally the accommodation comprises; Entrance Hallway, with staircase to first floor. Door into Sitting Room, beautifully decorated with coving to ceiling, window to front aspect. Beyond is the open plan Kitchen and Dining Room area, with glazed door leading out to the delightful rear garden. The Kitchen is fitted with a range of units comprising cupboards and drawers with a free standing gas cooker. On the First Floor the Landing leads to the Bathroom and three Bedrooms, two of which are doubles and a third single or even useful office, for those working from home. Outside a particular feature of the property is the well maintained rear garden, with paved patio, ideal for entertaining, with low level brick walling adding a quality finish. Steps lead up to the two tiered lawned areas, with various planted shrub borders creating texture and interest along with a useful garden storage Shed positioned towards the rear fence. The property is available with no onward chain.







## Accommodation

### Entrance Hall

### Sitting Room

14' 9" x 11' 5" Max (4.50m x 3.48m Max)

### Dining Area

10' x 7' 4" (3.05m x 2.24m)

### Kitchen

10' x 7' 2" (3.05m x 2.18m)

### First Floor

### Bedroom One

14' 2" x 8' 4" (4.32m x 2.54m)

### Bedroom Two

11' 3" x 8' 1" (3.43m x 2.46m)

### Bedroom Three

8' 5" x 6' 3" (2.57m x 1.91m)

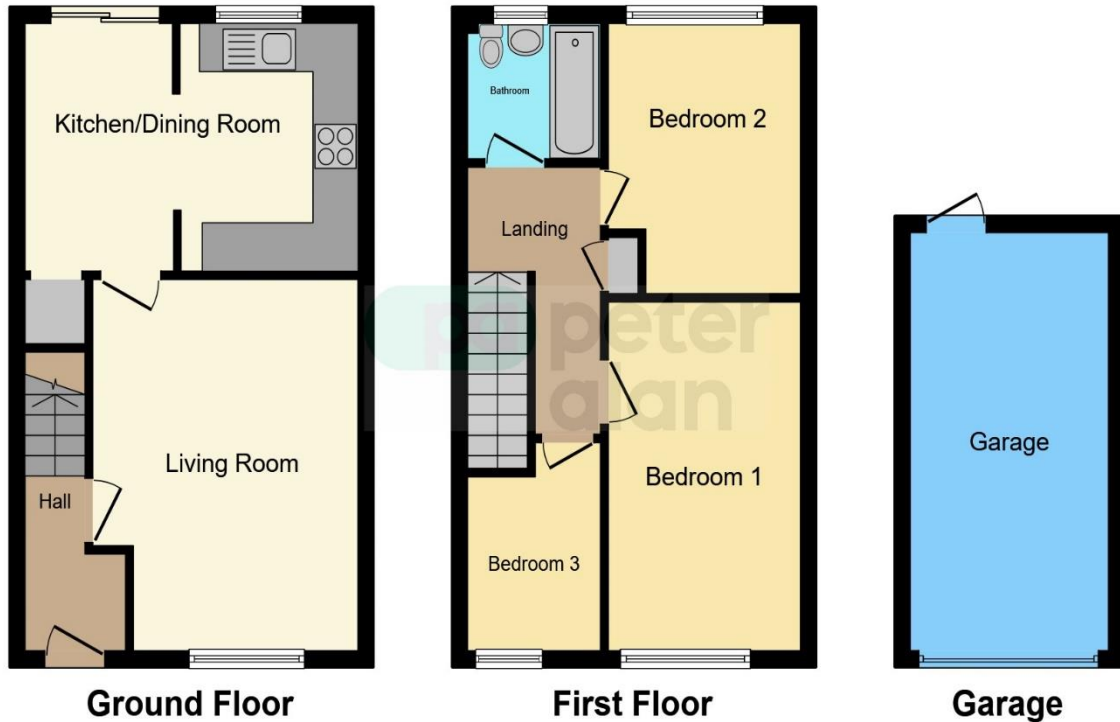
### Bathroom

### Outside

### Garage

16' 6" x 8' 3" min (5.03m x 2.51m min)

## Floorplan



This floor plan is for illustrative purposes only. It is not drawn to scale. Any measurements, floor areas (including any total floor area), openings and orientation are approximate. No details are guaranteed, they cannot be relied upon for any purpose and they do not form part of any agreement. No liability is taken for any error, omission or misstatement. A party must rely upon its own inspection(s). Powered by [www.focalagent.com](http://www.focalagent.com)

## Important Information

Note while we endeavour to make our sales details accurate and reliable, if there is any point which is of particular interest to you, please contact the office and we will be pleased to confirm the position for you. We have not personally tested any apparatus, equipment, fixtures, fittings or services and cannot verify they are in working order or fit for their purposes. Nothing in these particulars is intended to indicate that carpets or curtains, furnishings or fittings, electrical goods (whether wired or not). Gas fires or light fittings or any other fixtures not expressly included form part of the property offered for sale. This computer generated Floorplan, if applicable, is intended as a general guide to the layout and design of the property. It is not to scale and should not be relied upon for dimensions. Tenure: We cannot confirm the tenure of the property as we have not had access to the legal documents. The buyer is advised to obtain verification from their solicitor or surveyor.

Peter Alan Limited is registered in England and Wales under company number 2073153, Registered Office is Cumbria House, 16-20 Hockliffe Street, Leighton Buzzard, Bedfordshire, LU7 1GN. VAT Registration Number is 500 2481 05. For activities relating to regulated mortgages and non-investment insurance contracts, Peter Alan Limited is an appointed representative of Connells Limited which is authorised and regulated by the Financial Conduct Authority. Connells Limited's Financial Services Register number is 302221. Most buy-to-let