



Holmfield Drive, offers in the excess of £230,000

- Three bedroom semi-detached
- Far-reaching views
- Attractive front and rear Garden
- Well proportioned accomodation
- No onward chain
- EPC Rating: D



 3  1  1



About the property

Set towards the end of a no through road, nestled in the picturesque village of Llandogo, offering outstanding far reaching viewings, and stunning near-by walks. Well proportioned semi-detached property with 18ft length feature Kitchen with Dining Area. Extensive rear terraced garden.

Nestled within the picturesque village of Llandogo, offering outstanding far reaching viewings and stunning near-by walks. Primary School, Village Hall and Pub. The semi-detached property, enjoys a slightly elevated position with delightful views from the first floor and upper garden level. Internally the well proportioned accommodation comprises; Entrance Hall, Sitting Room to front aspect capturing natural light. Wood effect flooring, wood burner set to one corner, which attributes a cosy atmosphere. Modern updated fitted Kitchen with a range of wooden units, open plan Dining Area, tiled flooring and door leading out to the rear paved patio area. On the First Floor, there is a Bathroom and three bedrooms, with one of the double bedrooms offering distant views that are sure to allure your interest. Second double bedroom with built-in wardrobes, and third, single bedroom ideal for a child's room or study. Outside the front garden is lawned with planted border. The rear garden is paved adjacent to the house with steps leading through the deep tiered garden with delightful upper area, ideal for appreciating the distant Wye Valley views.





Accommodation

Entrance Hall

Sitting Room

12' 3" x 11' 8" (3.73m x 3.56m)

Kitchen/Dining Room

18' 7" narrowing to 10' 3" x 11' 1" (5.66m narrowing to 3.12m x 3.38m)

First Floor

Bedroom One

10' 7" x 10' 7" (3.23m x 3.23m)

Bedroom Two

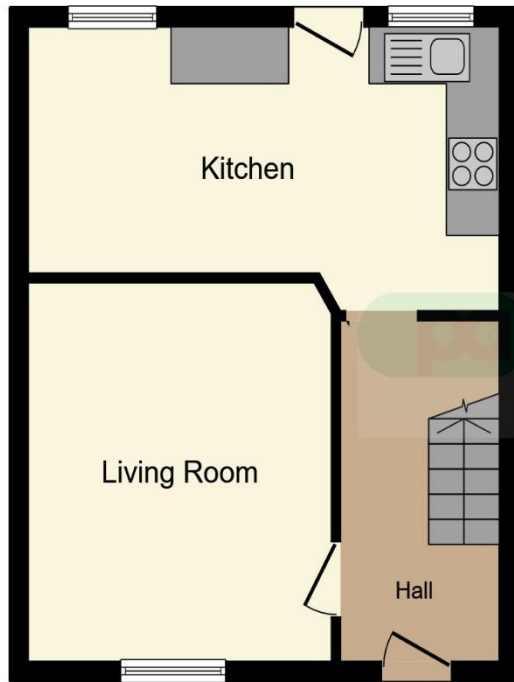
9' 8" x 9' 2" (2.95m x 2.79m)
plus, wardrobes.

Bedroom Three

7' 6" x 5' 8" (2.29m x 1.73m)

Bathroom

Floorplan



Ground Floor



First Floor

This floor plan is for illustrative purposes only. It is not drawn to scale. Any measurements, floor areas (including any total floor area), openings and orientation are approximate. No details are guaranteed, they cannot be relied upon for any purpose and they do not form part of any agreement. No liability is taken for any error, omission or misstatement. A party must rely upon its own inspection(s). Powered by www.focalagent.com

Important Information

Note while we endeavour to make our sales details accurate and reliable, if there is any point which is of particular interest to you, please contact the office and we will be pleased to confirm the position for you. We have not personally tested any apparatus, equipment, fixtures, fittings or services and cannot verify they are in working order or fit for their purposes. Nothing in these particulars is intended to indicate that carpets or curtains, furnishings or fittings, electrical goods (whether wired or not). Gas fires or light fittings or any other fixtures not expressly included form part of the property offered for sale. This computer generated Floorplan, if applicable, is intended as a general guide to the layout and design of the property. It is not to scale and should not be relied upon for dimensions. Tenure: We cannot confirm the tenure of the property as we have not had access to the legal documents. The buyer is advised to obtain verification from their solicitor or surveyor.

Peter Alan Limited is registered in England and Wales under company number 2073153, Registered Office is Cumbria House, 16-20 Hockliffe Street, Leighton Buzzard, Bedfordshire, LU7 1GN. VAT Registration Number is 500 2481 05. For activities relating to regulated mortgages and non-investment insurance contracts, Peter Alan Limited is an appointed representative of Connells Limited which is authorised and regulated by the Financial Conduct Authority. Connells Limited's Financial Services Register number is 302221. Most buy-to-let