



St. Mary Street, £180,000

- Council Tax - Band C
- Charming period cottage
- Within Town Centre location
- Enclosed Courtyard Garden
- Open plan living area
- Modern Kitchen and Shower Room
- EPC Rating: E



 2
  1
  1

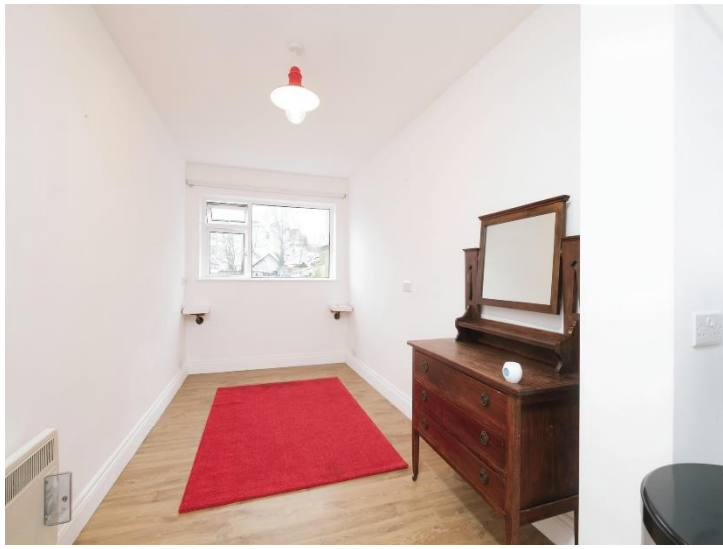


About the property

Available immediately with no onward chain. Charming Town house offering an easy living arrangement, with updated Kitchen and Shower Room. Ideally located for shops and amenities. Previous investment rental property.

Attractive character Town house, within an established and sought after area, close to the traditional charming Church Street, which offers, local shops and a cafe. With nearby Schooling and Library, with the main High Street also within convenient walking distance. The mid terrace property offers updated accommodation over two floors. With front door opening into a lobby, having staircase to first floor and opening through into the Sitting Room with Dining Area, having attractive bow window to front. The modern fitted Kitchen has a door leading out to the rear Courtyard, which is paved and provides an ideal area for table, chairs and potted plants. On the first floor there is Landing area with access to loft. Doors to following rooms; updated Shower Room, two Bedrooms, one to front and other to the rear aspect. The property is available immediately, with no onward chain.





Accommodation

Entrance

Sitting/Dining Room

23' 2" x 8' 9" narrowing to 5' 7" (7.06m x 2.67m narrowing to 1.70m)

Kitchen

12' 9" x 7' 3" (3.89m x 2.21m)

On The First Floor

Bedroom One

18' x 7' 2" narrowing to 6' 8" (5.49m x 2.18m narrowing to 2.03m)

Bedroom Two

8' 9" x 6' 7" extending to 10' 3" (2.67m x 2.01m extending to 3.12m)

Shower Room

Floorplan



This floor plan is for illustrative purposes only. It is not drawn to scale. Any measurements, floor areas (including any total floor area), openings and orientation are approximate. No details are guaranteed, they cannot be relied upon for any purpose and they do not form part of any agreement. No liability is taken for any error, omission or misstatement. A party must rely upon its own inspection(s). Powered by www.focalagent.com

Important Information

Note while we endeavour to make our sales details accurate and reliable, if there is any point which is of particular interest to you, please contact the office and we will be pleased to confirm the position for you. We have not personally tested any apparatus, equipment, fixtures, fittings or services and cannot verify they are in working order or fit for their purposes. Nothing in these particulars is intended to indicate that carpets or curtains, furnishings or fittings, electrical goods (whether wired or not). Gas fires or light fittings or any other fixtures not expressly included form part of the property offered for sale. This computer generated Floorplan, if applicable, is intended as a general guide to the layout and design of the property. It is not to scale and should not be relied upon for dimensions. Tenure: We cannot confirm the tenure of the property as we have not had access to the legal documents. The buyer is advised to obtain verification from their solicitor or surveyor.

Peter Alan Limited is registered in England and Wales under company number 2073153, Registered Office is Cumbria House, 16-20 Hockliffe Street, Leighton Buzzard, Bedfordshire, LU7 1GN. VAT Registration Number is 500 2481 05. For activities relating to regulated mortgages and non-investment insurance contracts, Peter Alan Limited is an appointed representative of Connells Limited which is authorised and regulated by the Financial Conduct Authority. Connells Limited's Financial Services Register number is 302221. Most buy-to-let