

Jubilee House, Station Approach

Epsom

£230,000



Jubilee House

Station Approach, Epsom

- One double bedroom apartment
- 526sqft
- Central Epsom location
- Stones throw from mainline station for links into London
- Beautifully presented
- Stunning views
- Bright and spacious
- Lift and entry phone

Welcome to this fantastic one-bedroom flat located in the heart of Central Epsom! This one-double bedroom apartment is beautifully presented and boasts stunning views that will take your breath away. With 526sqft of bright and spacious living space, this cosy flat offers a comfortable and stylish living experience.

Situated just a stone's throw away from the mainline station, commuting into London couldn't be easier. Imagine waking up to the convenience of having excellent transport links right at your doorstep!



The flat also features a lift and entry phone for added security and ease of access. Whether you're a first-time buyer looking for a modern and convenient home or a savvy investor searching for a prime rental property, this flat is sure to tick all the boxes.

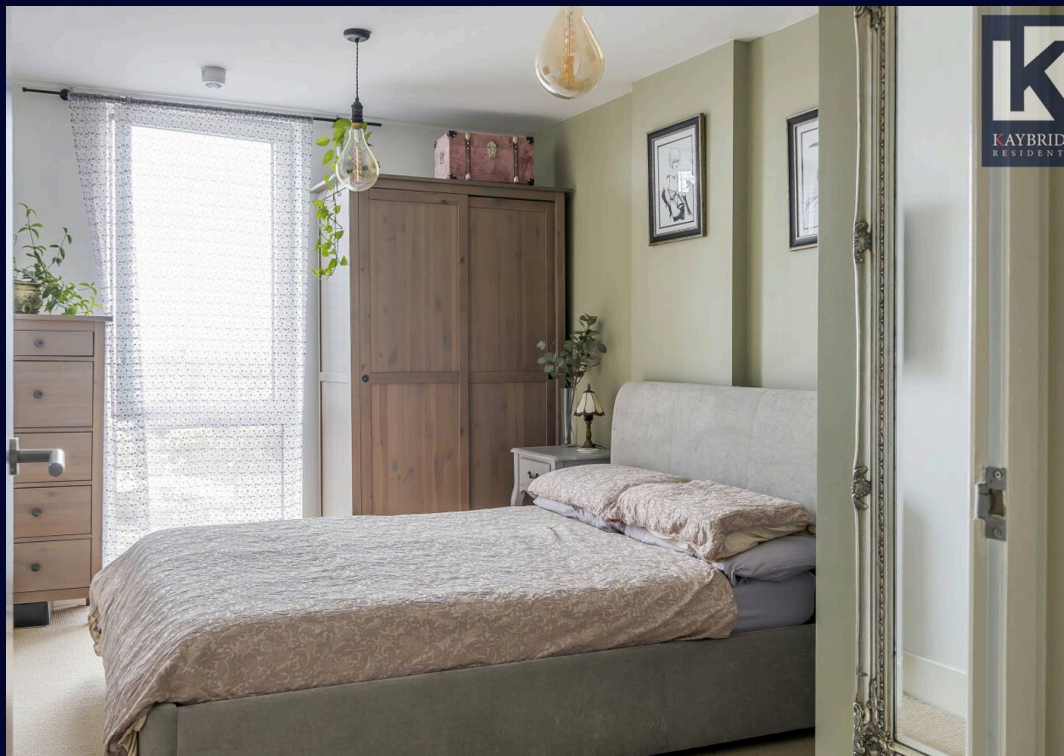
Don't miss out on this opportunity to own a slice of city living in a prime location - book your viewing today and make this charming flat your next home.

Tenure: Leasehold

EPC Energy Efficiency Rating: C

EPC Environmental Impact Rating: A

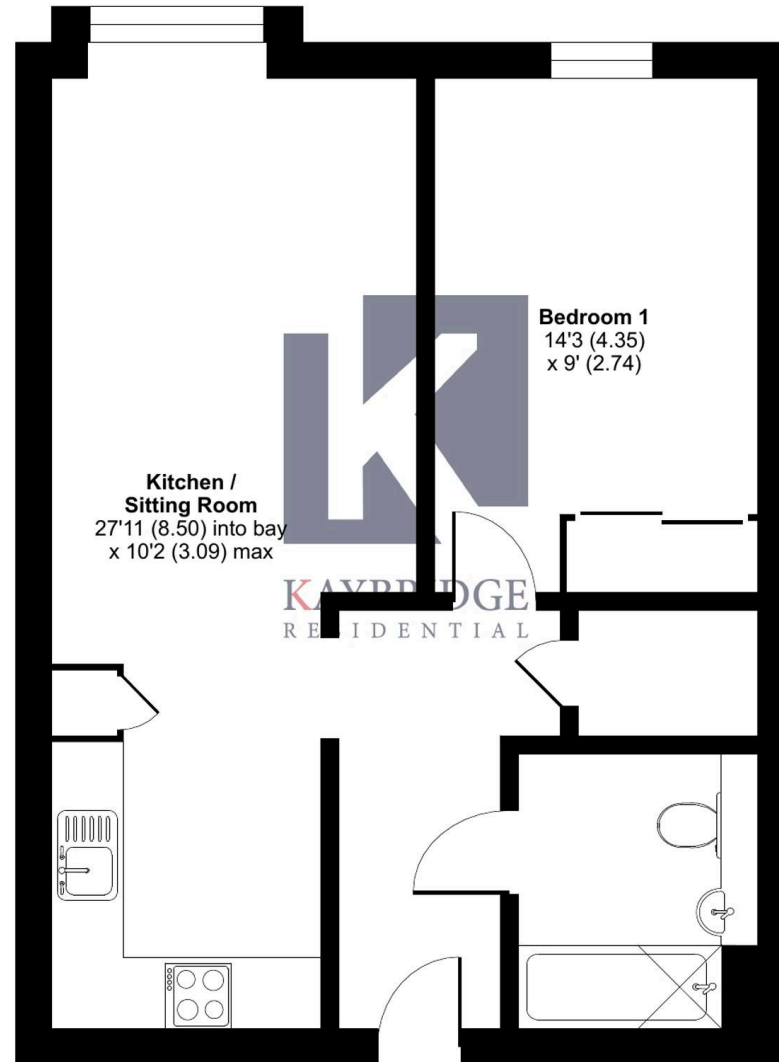




Station Approach, Epsom, KT19

Approximate Area = 526 sq ft / 48.9 sq m

For identification only - Not to scale



GROUND FLOOR



Floor plan produced in accordance with RICS Property Measurement 2nd Edition, Incorporating International Property Measurement Standards (IPMS2 Residential). © nchecon 2025. Produced for Kaybridge Residential Ltd. REF: 1264620



Kaybridge Residential Estate Agents

Kaybridge Residential Estate Agents, 23 Stoneleigh Broadway - KT17 2JE

02080040474 • info@kbridge.co.uk • www.kaybridgeresidential.co.uk/

The information contained in this brochure is provided for general guidance and marketing purposes only. While every effort has been made to ensure the accuracy of the details provided, Kaybridge Residential cannot guarantee that all information is correct, complete, or up-to-date. Property Details: The descriptions, floor plans, dimensions, and photographs are intended to give a general overview of the property and may not represent its precise condition or layout. Prospective buyers are advised to