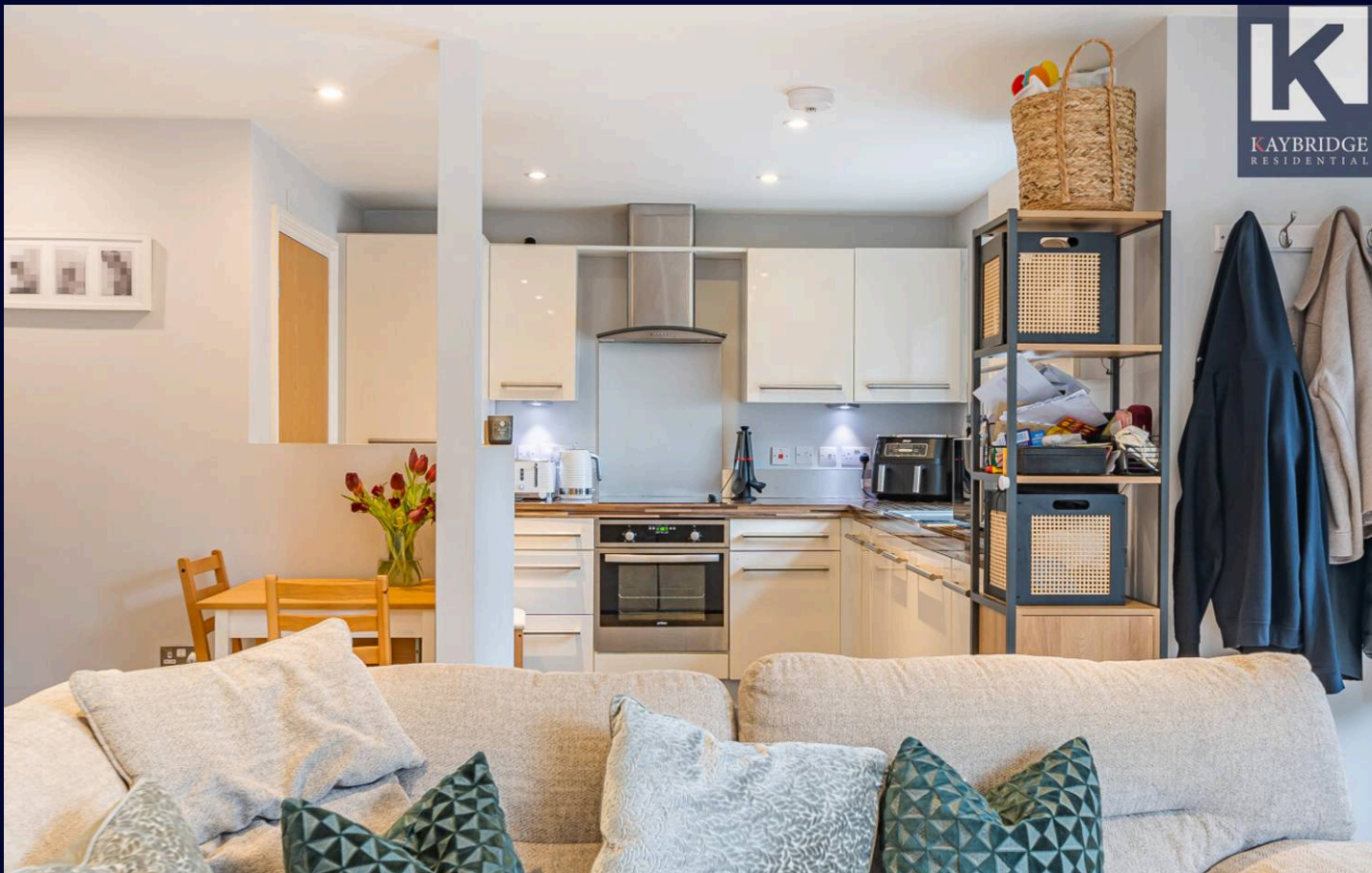




Crystal Place, Worcester Park

Worcester Park

In Excess of £435,000



Crystal Place

Worcester Park, Worcester Park

- Two Bedroom House
- Semi-Detached
- Private Garden
- Allocated Parking Space
- Secure Gated Entrance
- Close proximity to Worcester Park High Street
- Great Condition
- 0.6 Miles To Worcester Park Station
- Underfloor Heating Throughout

Presenting a beautifully maintained 2-bedroom semi-detached house with a private garden and an allocated off street parking space. Beyond the privately electric gated entrance lies a charming property in great condition, boasting underfloor heating for added comfort.

Conveniently situated in close proximity to Worcester Park High Street, offering easy access to a range of amenities and services. Just 0.6 miles away from Worcester Park Station, commuting becomes a breeze for residents.

Through the front door, you are welcomed into a bright and airy living space, perfect for relaxation and entertainment. The kitchen is integrated and well equipped, providing a functional area for culinary activities. Upstairs, two generously sized bedrooms offer peaceful retreats for rest and relaxation, the principal bedroom benefits from ample built in wardrobe space and the family bathroom has a bathtub and separate shower. The property's modern design and practical layout make it a fantastic place to call home offering a peaceful retreat for rest and relaxation.



Presenting a beautifully maintained 2-bedroom semi-detached house with a private garden and an allocated off street parking space. Beyond the privately electric gated entrance lies a charming property in great condition, boasting underfloor heating for added comfort.

Conveniently situated in close proximity to Worcester Park High Street, offering easy access to a range of amenities and services. Just 0.6 miles away from Worcester Park Station, commuting becomes a breeze for residents.

Through the front door, you are welcomed into a bright and airy living space, perfect for relaxation and entertainment. The kitchen is integrated and well equipped, providing a functional area for culinary activities. Upstairs, two generously sized bedrooms offer peaceful retreats for rest and relaxation, the principal bedroom benefits from ample built in wardrobe space and the family bathroom has a bathtub and separate shower. The property's modern design and practical layout make it a fantastic place to call home offering a peaceful retreat for rest and relaxation.

Don't miss the opportunity to make this desirable property your own - schedule a viewing today to experience the comfort and convenience that this home has to offer.

Council Tax band: D

Tenure: Freehold

EPC Energy Efficiency Rating: D

EPC Environmental Impact Rating: C

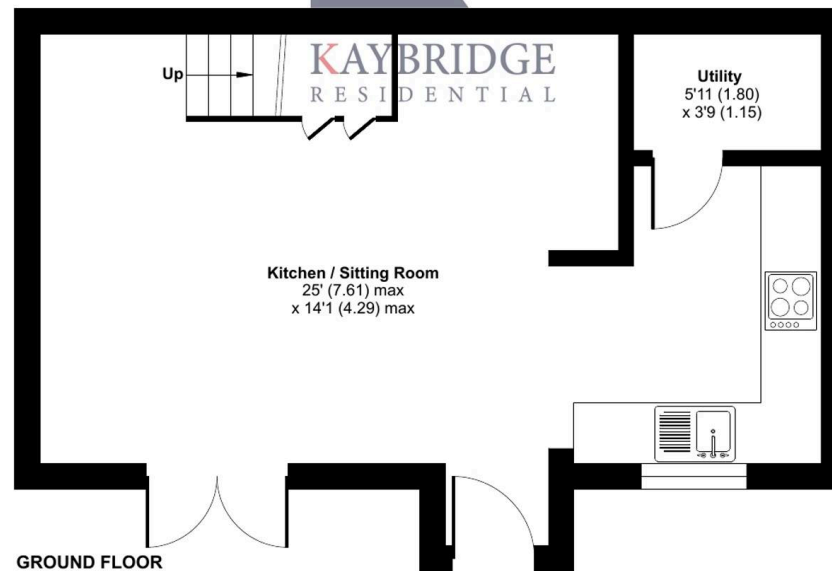
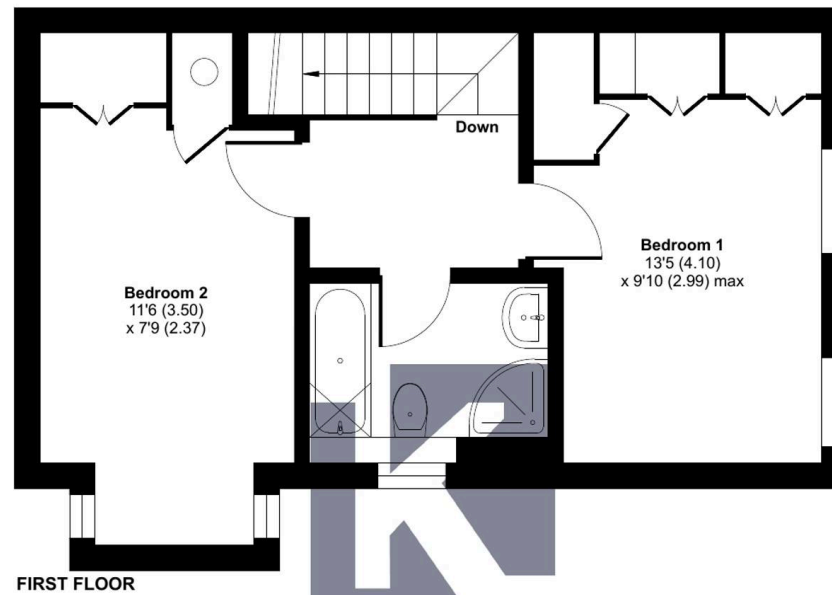




Crystal Place, Worcester Park, KT4

Approximate Area = 727 sq ft / 67.5 sq m

For identification only - Not to scale



Floor plan produced in accordance with RICS Property Measurement 2nd Edition, Incorporating International Property Measurement Standards (IPMS2 Residential). © n1xhecom 2025. Produced for Kaybridge Residential Ltd. REF: 1251732



Kaybridge Residential Estate Agents

Kaybridge Residential Estate Agents, 23 Stoneleigh Broadway - KT17 2JE

02080040474 • info@kbridge.co.uk • www.kaybridgeresidential.co.uk/

The information contained in this brochure is provided for marketing purposes only. We have not been independent of the details provided, Kaybridge cannot guarantee that the information is correct, complete, or up-to-date. The content of this brochure is a general guide only and may not represent its price or layout. Please contact us for more information.

