



KAYBRIDGE  
RESIDENTIAL



AGATE HOUSE

Percy Gardens, Worcester Park

Worcester Park

In Excess of £220,000



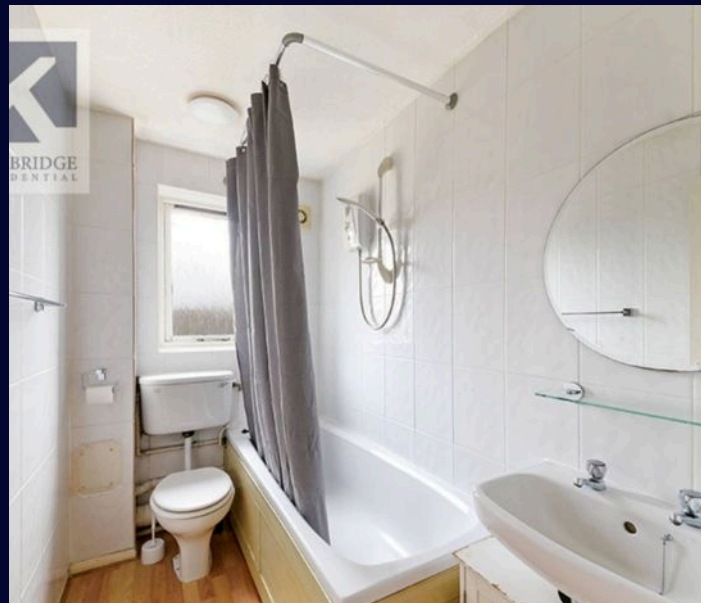
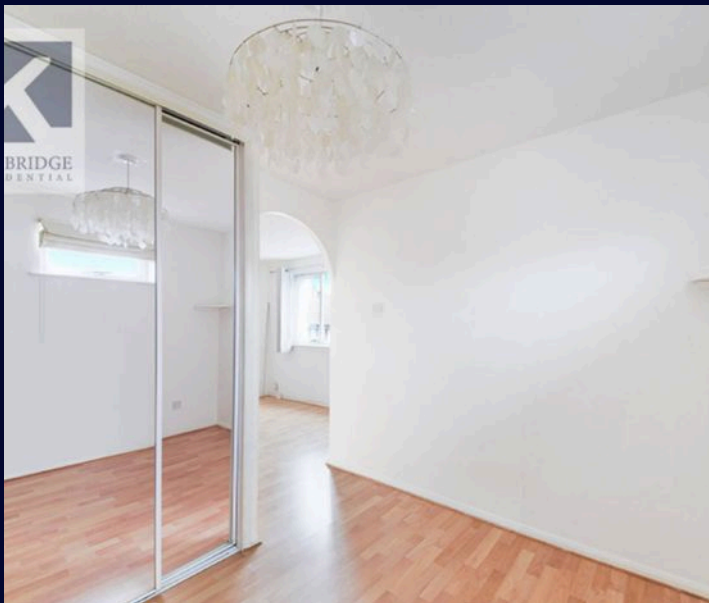


## Percy Gardens

### Worcester Park

- Chain Free
- Second Floor Apartment
- Kitchen
- Double Bedroom
- Communal Gardens
- Resident Parking

Kaybridge Residential are pleased to offer to market this beautifully presented purpose built top floor one bedroom apartment situated on a popular development just moments by foot to Malden Manor Zone 4 Train Station, with services to London Waterloo. This property compromises of having it's own kitchen, bathroom and separate bedroom with built in Wardrobes. The Kitchen includes all of fridge freezer and a new washing machine. Within walking distance to Malden Manor Train Station and local shops and cafe's. Malden Manor Station takes you directly to London Waterloo and Wimbledon Stations which make this property in an ideal location for a working professional.



This property is also located within 1 mile of the A3 which takes you to Central London & Portsmouth. This property is offered unfurnished, but the current tenant is willing to discuss which furniture may stay in the property. Available from the 5th of August 2020 and property will be freshly decorated once the current tenant leaves. This property is in high demand and will go quick, viewings are highly recommended please call Kaybridge Residential on 0208 004 0474 to arrange an appointment for this property.

Council Tax band: B

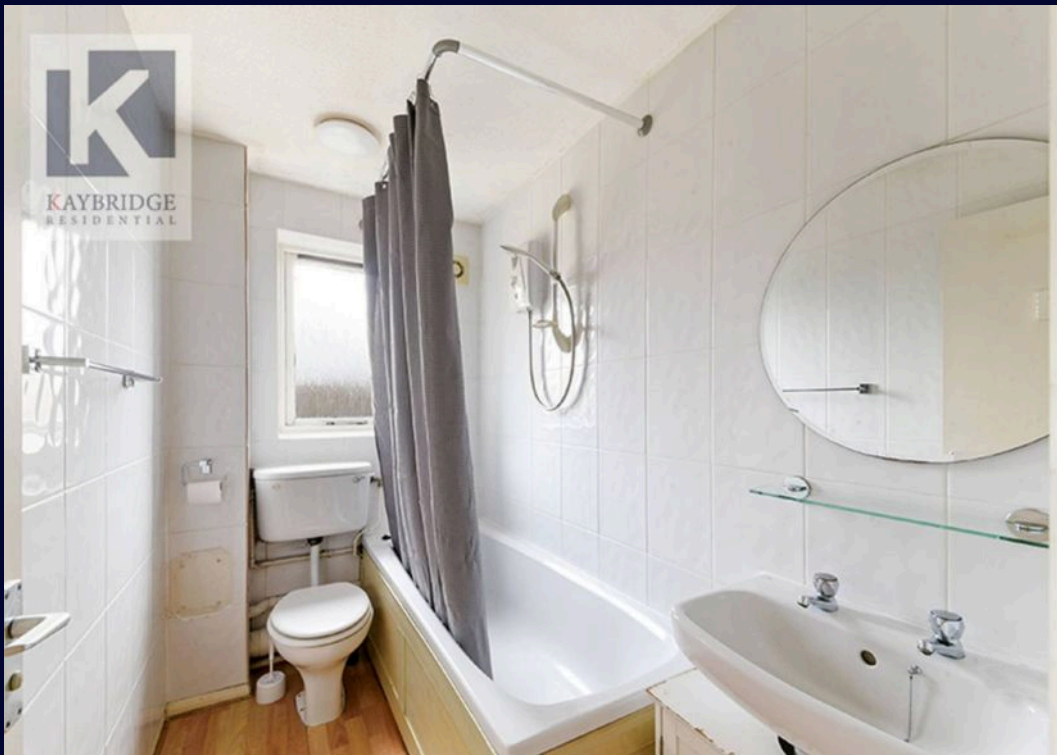
Tenure: Leasehold

EPC Energy Efficiency Rating: D

EPC Environmental Impact Rating: D











## Kaybridge Residential Estate Agents

Kaybridge Residential Estate Agents, 23 Stoneleigh Broadway - KT17 2JE

02080040474 • [info@kbridge.co.uk](mailto:info@kbridge.co.uk) • [www.kaybridgeresidential.co.uk/](http://www.kaybridgeresidential.co.uk/)

The information contained in this brochure is provided for marketing purposes only. We have not been independent in the details provided, Kaybridge cannot guarantee that the information is correct, complete, or up-to-date. The content is for general information only and may not represent its price or value. Please contact us for more information.

