



Seaforth Gardens, Epsom

Epsom

Guide Price £850,000



Seaforth Gardens

Epsom, Epsom

- Extended five bedroom semi-detached home
- Close to good schools and mainline station
- Highly sought-after location
- Immaculately presented throughout
- Off-street parking
- Landscaped garden with summerhouse
- Ensuite bedroom
- Open plan Kitchen/dining room with utility
- Study and downstairs bathroom

GUIDE PRICE £850,000 - £875,000

Nestled in a highly sought-after location, this extended five-bedroom semi-detached home offers a perfect blend of modern convenience and classic charm. As you step inside, you'll be greeted by a beautifully presented interior that exudes warmth and style. The ground floor features a spacious open plan kitchen/dining room with a convenient utility area, ideal for gathering with family and friends. Completing the ground floor is a study, dining/living room, separate reception room and a well-appointed downstairs bathroom for added convenience. Upstairs, the property boasts five generously proportioned bedrooms, including an ensuite bedroom, providing ample space for a growing family.



Outside, the property offers a delightful landscaped garden, perfect for enjoying lazy summer days or entertaining guests. The garden features a charming summerhouse, providing an ideal space for relaxation or a home office. Additionally, off-street parking ensures there's always a convenient spot available for your vehicles. Situated close to good schools and a mainline station, this property is well-positioned for those seeking a convenient lifestyle with easy access to amenities and transport links. Immaculately presented throughout, this home offers a rare opportunity to own a property that effortlessly combines modern comforts with timeless appeal.

Council Tax band: E

Tenure: Freehold





Seaforth Gardens, Epsom, KT19

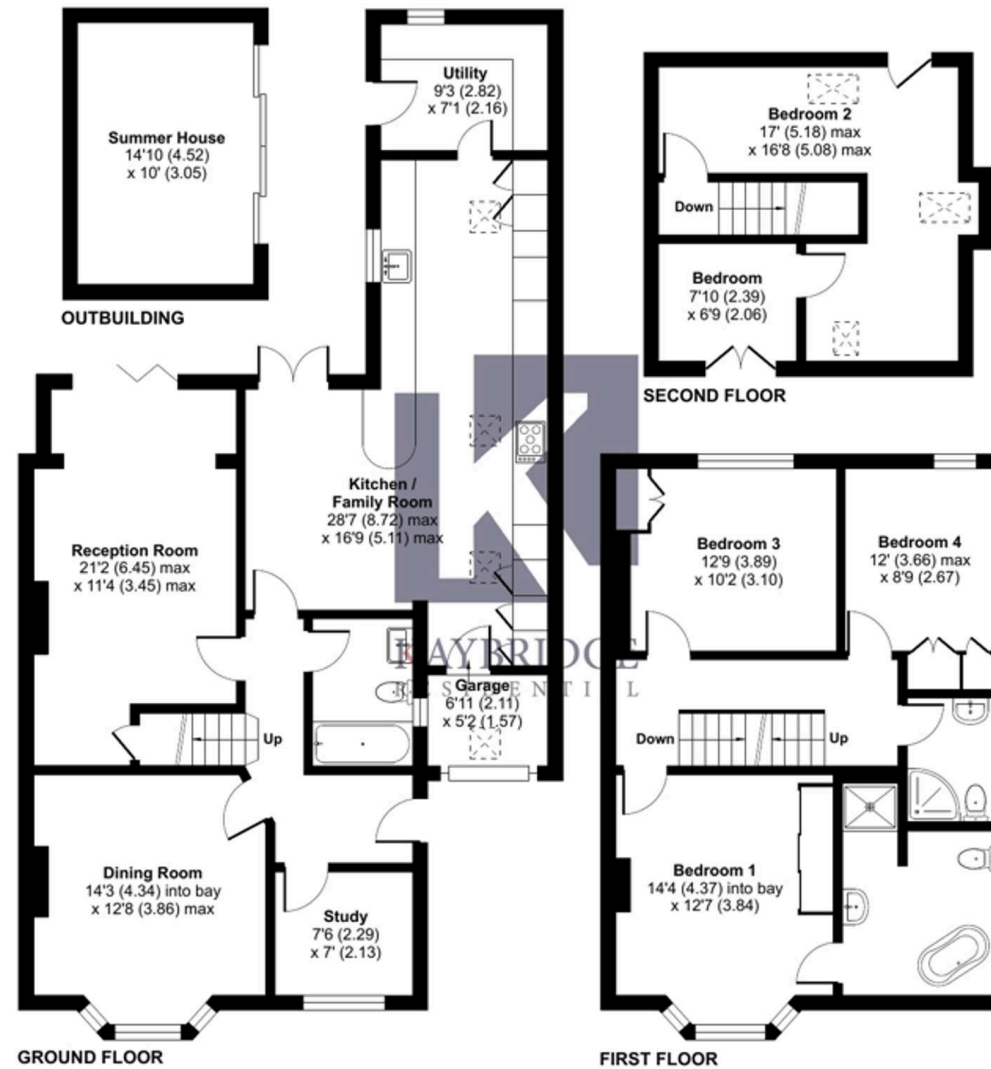
Approximate Area = 1998 sq ft / 185.6 sq m

Garage = 35 sq ft / 3.2 sq m

Outbuilding = 148 sq ft / 13.7 sq m

Total = 2181 sq ft / 202.5 sq m

For identification only - Not to scale





Kaybridge Residential Epsom

Kaybridge Residential Estate Agents, 23 Stoneleigh Broadway - KT17 2JE

02080040474 • info@kbridge.co.uk • www.kaybridgeresidential.co.uk/

