



KAYBRIDGE
RESIDENTIAL



Hilda Court, Lovelace Road

Surbiton

£425,000 - £450,000

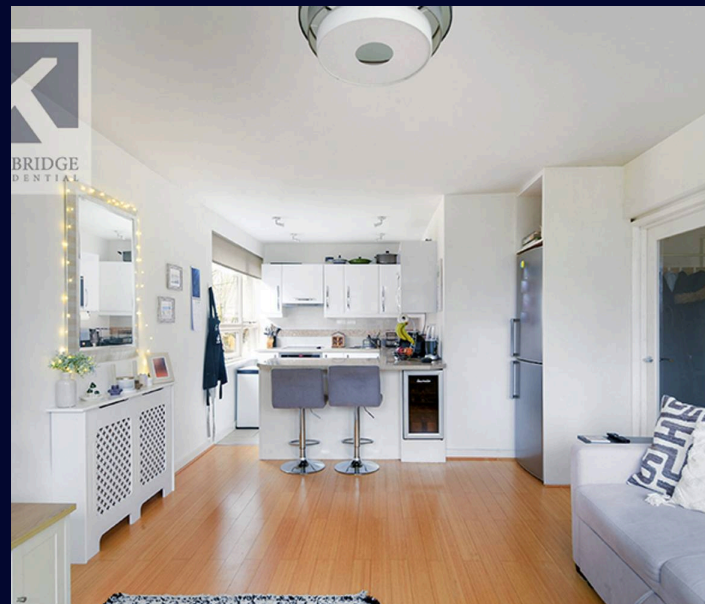
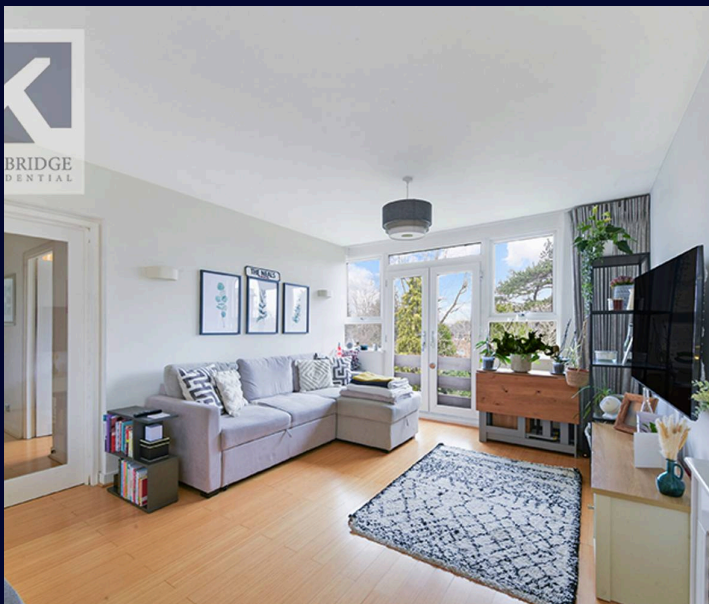


Hilda Court

Surbiton

- Two double bedrooms
- Highly sought-after Lovelace area
- Share-Of-Freehold
- Close to Surbiton high-street and mainline station
- Garage
- Stunning communal gardens
- Walking distance to good schools

Nestled in the highly sought-after Lovelace area, this immaculately presented two-bedroom flat offers a rare opportunity for discerning buyers. Boasting two double bedrooms and a share-of-freehold, this property is perfect for those seeking convenience and style. The flat is conveniently located near Surbiton high-street and mainline station, making commuting a breeze. Additionally, the property features a garage and access to stunning communal gardens, providing a tranquil retreat in the heart of the Surbiton. Within walking distance to good schools, this residence is ideal for families or professionals looking for a well-connected home in a desirable location.



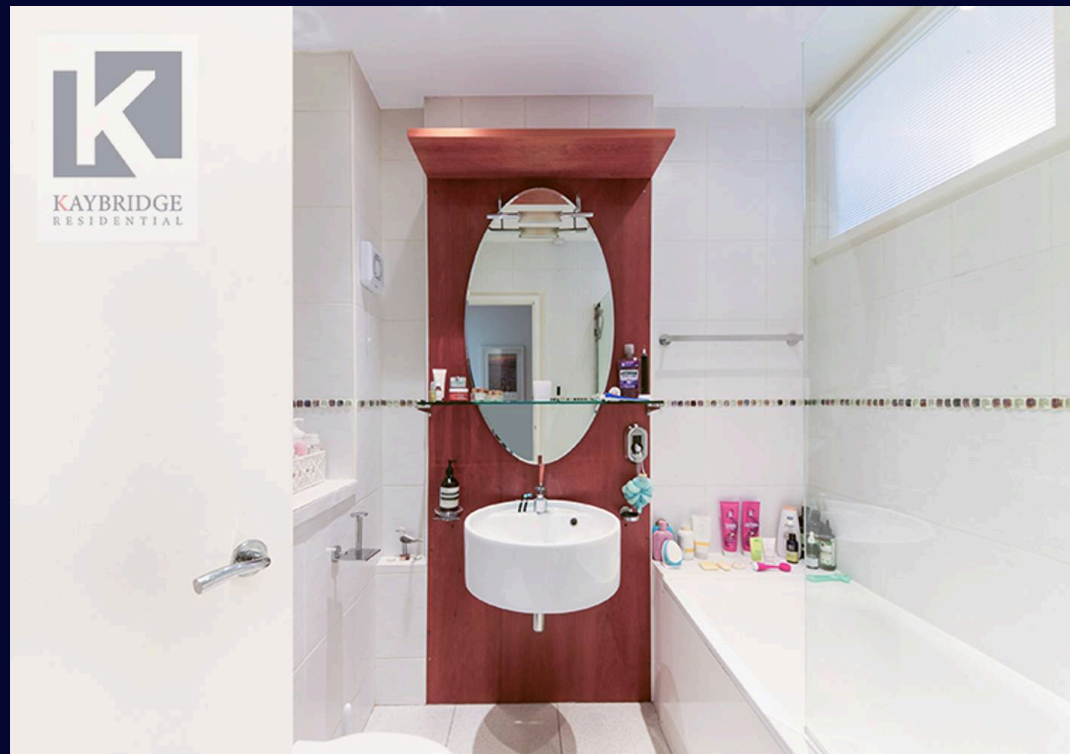
The property's outdoor space offers a serene escape from the hustle and bustle of urban life, providing a perfect setting for relaxation and socialising. With its convenient location and attractive features, this property is a rare find that combines comfort, style, and practicality for a truly exceptional living experience.

Council Tax band: D

Tenure: Leasehold

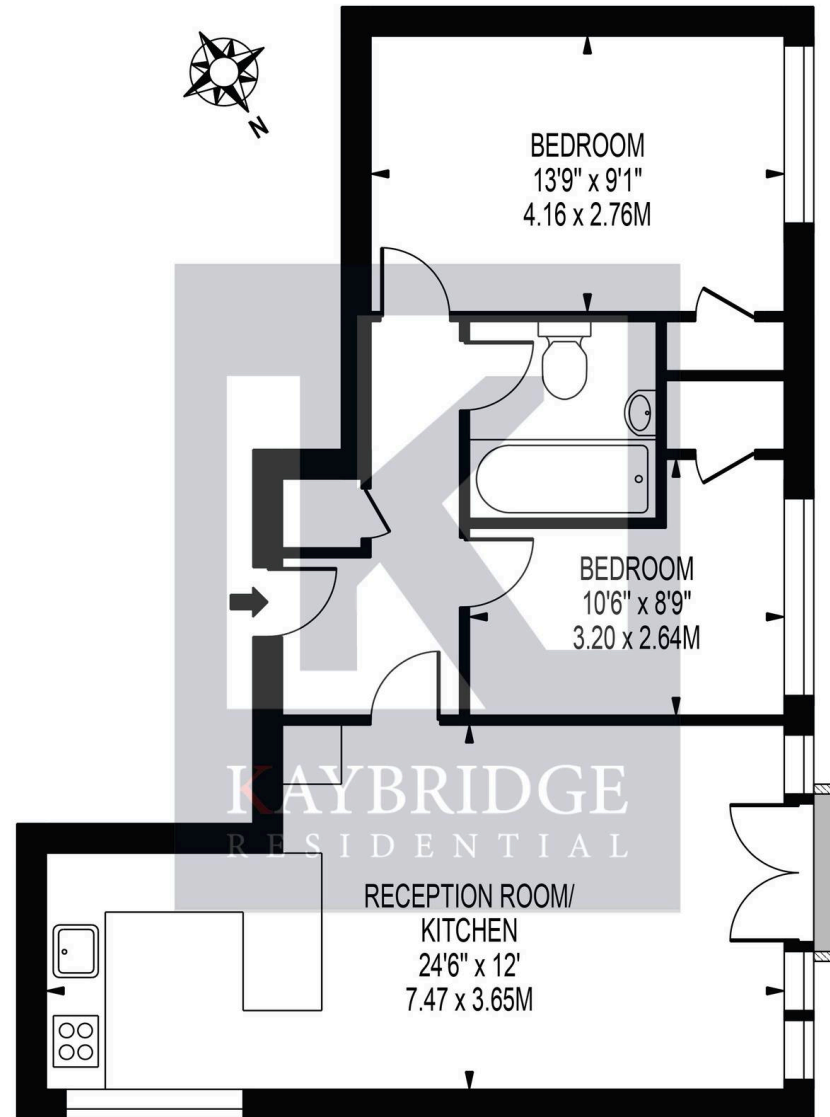
EPC Energy Efficiency Rating: E





HILDA COURT

APPROXIMATE GROSS INTERNAL FLOOR AREA: 606 SQ FT - 56.28 SQ M



SECOND FLOOR

FOR ILLUSTRATION PURPOSES ONLY

THIS FLOOR PLAN SHOULD BE USED AS A GENERAL OUTLINE FOR GUIDANCE ONLY AND DOES NOT CONSTITUTE IN WHOLE OR IN PART AN OFFER OR CONTRACT.
ANY INTENDING PURCHASER OR LESSEE SHOULD SATISFY THEMSELVES BY INSPECTION, SEARCHES, ENQUIRIES AND FULL SURVEY AS TO THE CORRECTNESS OF EACH STATEMENT.
ANY AREAS, MEASUREMENTS OR DISTANCES QUOTED ARE APPROXIMATE AND SHOULD NOT BE USED TO VALUE A PROPERTY OR BE THE BASIS OF ANY SALE OR LET.



Kaybridge Residential Estate Agents

Kaybridge Residential Estate Agents, 23 Stoneleigh Broadway - KT17 2JE

02080040474 • info@kbridge.co.uk • www.kaybridgeresidential.co.uk/

The information contained in this brochure is provided for general guidance and marketing purposes only. While every effort has been made to ensure the accuracy of the details provided, Kaybridge Residential cannot guarantee that all information is correct, complete, or up-to-date. Property Details: The descriptions, floor plans, dimensions, and photographs are intended to give a general overview of the property and may not represent its precise condition or layout. Prospective buyers are advised to