



KAYBRIDGE
RESIDENTIAL



KAYBRIDGE
RESIDENTIAL



Birchfield Grove, Epsom

Epsom

£899,950

Birchfield Grove

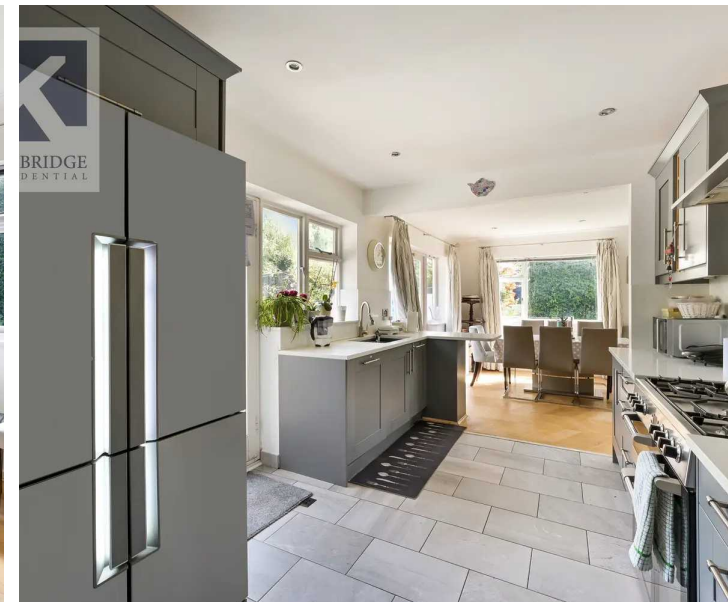
Epsom

- Detached
- Four double bedrooms
- Annexe
- Private Road
- Close proximity to mainline station
- Highly sought-after location
- Three bathrooms
- Secluded

Nestled within a private road in a highly sought-after location, this four-bedroom detached home offers an exquisite blend of luxury, space, and privacy. Boasting four generously sized double bedrooms, three bathrooms, and a versatile annexe, this property is perfect for families seeking ample living space and flexibility. The secluded nature of the property ensures tranquillity and privacy away from the hustle and bustle of every-day life.

Situated just a short distance from the mainline station, commuting to the City or other nearby towns is effortless. Additionally, the property's close proximity to a range of amenities, outstanding schools, Nonsuch Park and recreational facilities, adds to its appeal.

The lavish outside space is a true oasis, providing a sanctuary for relaxation and leisure and the large driveway allows for ample parking spaces, ensuring convenience for homeowners and their guests.





Birchfield Grove

Epsom

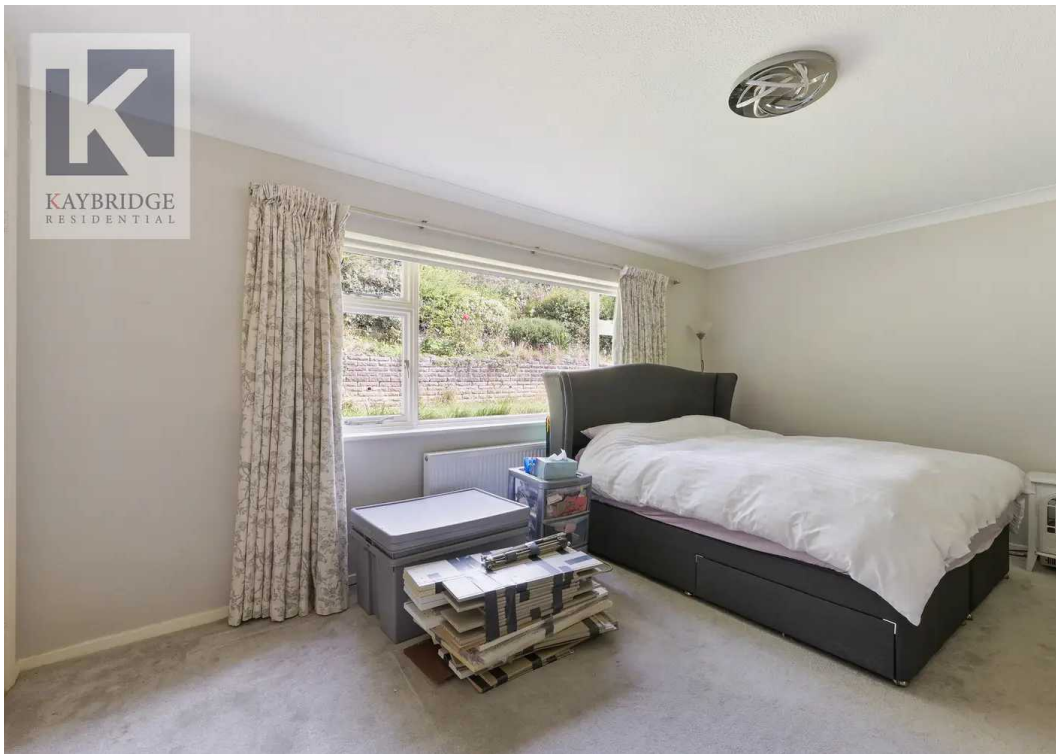
The combination of lush greenery, serene ambience, and the delightful sounds of chirping birds make this outdoor space unforgettable. Whether it's spending quality time with family, hosting summer parties, or simply unwinding, the outside space of this property exceeds all expectations.

In conclusion, this remarkable four-bedroom detached home offers not only a flexible accommodation and spacious interior but also an idyllic outside space. This property is a truly sensational find in the highly sought-after area.



Council Tax band: G

Tenure: Freehold



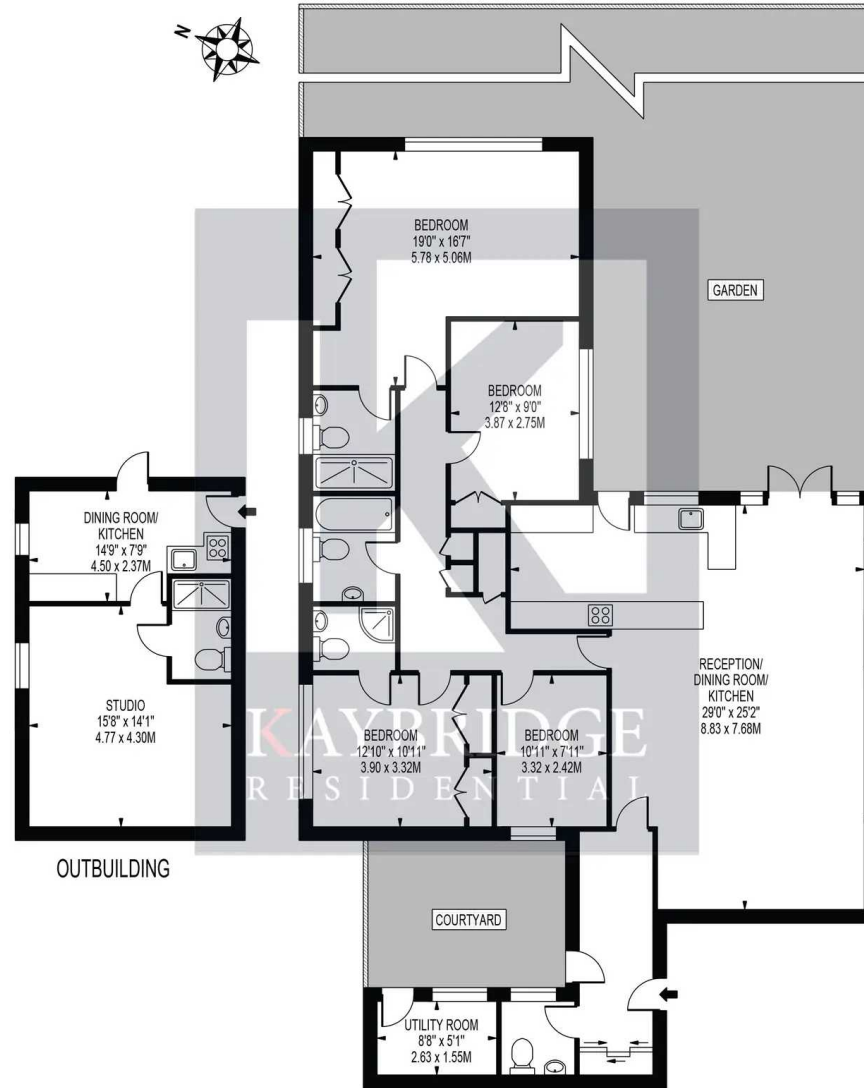
BIRCHFIELD GROVE

APPROXIMATE GROSS INTERNAL FLOOR AREA: 1596 SQ FT - 148.30 SQ M

(EXCLUDING UTILITY ROOM & OUTBUILDING)

APPROXIMATE GROSS INTERNAL FLOOR AREA OF UTILITY ROOM: 44 SQ FT - 4.08 SQ M

APPROXIMATE GROSS INTERNAL FLOOR AREA OF OUTBUILDING: 346 SQ FT - 32.12 SQ M



GROUND FLOOR

FOR ILLUSTRATION PURPOSES ONLY

THIS FLOOR PLAN SHOULD BE USED AS A GENERAL OUTLINE FOR GUIDANCE ONLY AND DOES NOT CONSTITUTE IN WHOLE OR IN PART AN OFFER OR CONTRACT. ANY INTENDING PURCHASER OR LESSEE SHOULD SATISFY THEMSELVES BY INSPECTION, SEARCHES, ENQUIRIES AND FULL SURVEY AS TO THE CORRECTNESS OF EACH STATEMENT. ANY AREAS, MEASUREMENTS OR DISTANCES QUOTED ARE APPROXIMATE AND SHOULD NOT BE USED TO VALUE A PROPERTY OR BE THE BASIS OF ANY SALE OR LET.



Kaybridge Residential Epsom

Kaybridge Residential Estate Agents, 23 Stoneleigh Broadway - KT17 2JE

02080040474 • info@kbridge.co.uk • www.kaybridgeresidential.co.uk/