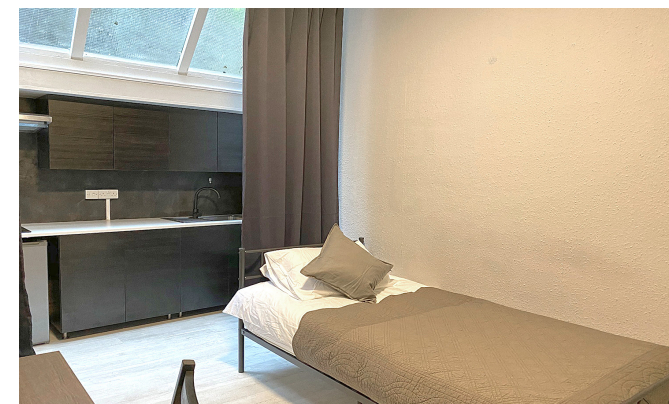




INTERLET

COURTFIELD GARDENS, EARLS COURT, LONDON, SW5  
£253.85 PW





A cosy, newly refurbished bedsit room in a lovely neighbourhood, Courtfield Gardens, Earls Court, London SW5. The property comprises a brand-new, fully integrated kitchen with a hob, a sink, a fridge/freezer, a comfortable bed, and access to a small courtyard. This bedsit has been recently refurbished and features brand-new flooring and a smooth finish throughout. The room also benefits from plenty of natural light thanks to the large windows above the kitchen area. The bathroom is shared with just a couple of tenants who are very friendly. Council Tax and all utilities – water, central heating, and electricity – are INCLUDED. This bedsit is located in a lovely building, ideally situated in the quiet neighbourhood of Courtfield Gardens. It is just a two-minute walk to Earls Court or Gloucester Road tube stations, which provide services via the District, Circle, and Piccadilly Lines. The amenities of Earls Court are just a stone's throw away and the attractions of Kensington High Street are also within walking distance.[...]

lettings@interlet.com  
+44(0)20 7795 6525  
www.interlet.com





## Important Notice

Interlet and their clients give notice that: 1) They are not authorised to make or give any representations or warranties in relation to the property, either here or elsewhere. The particulars do not form part of any offer or contract and must not be relied upon as statements or representations of fact. 2) Any areas, measurements, and distances are approximate. The text, images, and plans are for guidance only and are not necessarily comprehensive. It should not be assumed that the property has all necessary planning, building regulation, or other contents. Interlet has not tested any services, equipment, or facilities. Prospective tenants must satisfy themselves by inspection or otherwise. Please note that the local area may be affected by aircraft noise, you should make your own inquiries regarding any noise in the area before you make an offer.



# interlet

SALES & LETTINGS

Welcome home.