



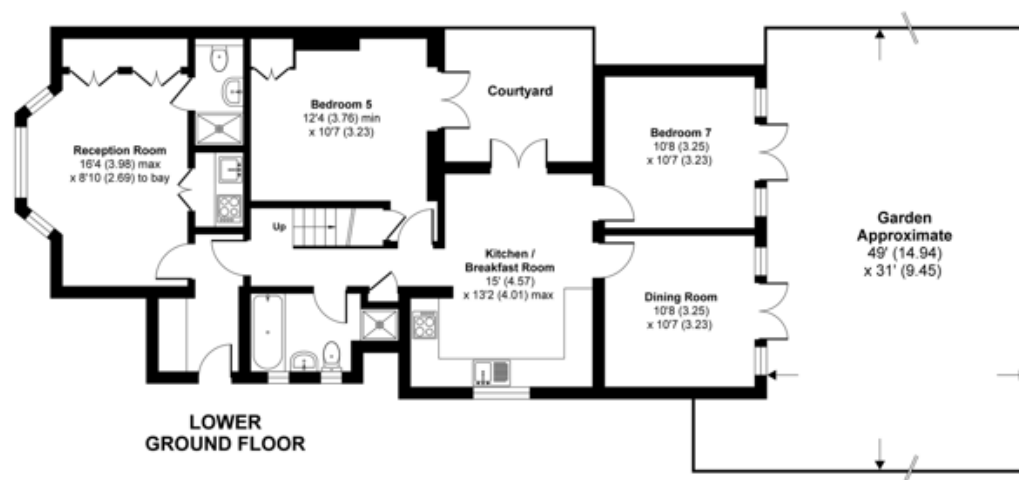
INTERLET

LOFTUS ROAD, SHEPHERDS BUSH, LONDON, W12
£675 PW



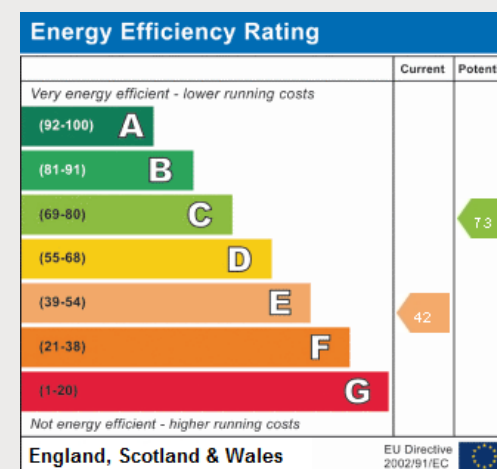
ZERO DEPOSIT AVAILABLE | LOFTUS ROAD, SHEPHERDS BUSH, LONDON W12 | 3 BEDROOM GARDEN FLAT A well-presented three-bedroom apartment on the tree-lined Loftus Road, Shepherds Bush, London W12. The home boasts an exceptionally large garden, well-equipped kitchen and a cosy living area that opens into a quaint courtyard, allowing for seamless indoor-outdoor living. The abundance of natural light, central heating, and wooden flooring throughout create a warm and inviting atmosphere, making it ideal for families, young professionals, or students. Located just minutes from Shepherds Bush Market Tube Station, this property offers unparalleled convenience. The proximity to Westfield London, the largest shopping centre in the UK and Europe, provides a myriad of shopping, dining, and entertainment options. Additionally, easy access to the A40 ensures quick and efficient travel to other parts of the city. This vibrant area combines the charm of a residential neighborhood with the amenities of a bustling urban center. Holding deposit: £675[...]

lettings@interlet.com
+44(0)20 7795 6525
www.interlet.com



Important Notice

Interlet and their clients give notice that: 1) They are not authorised to make or give any representations or warranties in relation to the property, either here or elsewhere. The particulars do not form part of any offer or contract and must not be relied upon as statements or representations of fact. 2) Any areas, measurements, and distances are approximate. The text, images, and plans are for guidance only and are not necessarily comprehensive. It should not be assumed that the property has all necessary planning, building regulation, or other contents. Interlet has not tested any services, equipment, or facilities. Prospective tenants must satisfy themselves by inspection or otherwise. Please note that the local area may be affected by aircraft noise, you should make your own inquiries regarding any noise in the area before you make an offer.



interlet

SALES & LETTINGS

Welcome home.