



INTERLET

STRATFORD ROAD, KENSINGTON, LONDON W8
£3,000 PW



Nestled in a prestigious location just off Kensington High Street, London W8, this exceptional four/five-bedroom house is a masterpiece of architectural design. Occupying four floors of the coveted Stratford Road, this magnificent property boasts a minimalistic aesthetic, with innovative styling and cutting-edge designs.



lettings@interlet.com

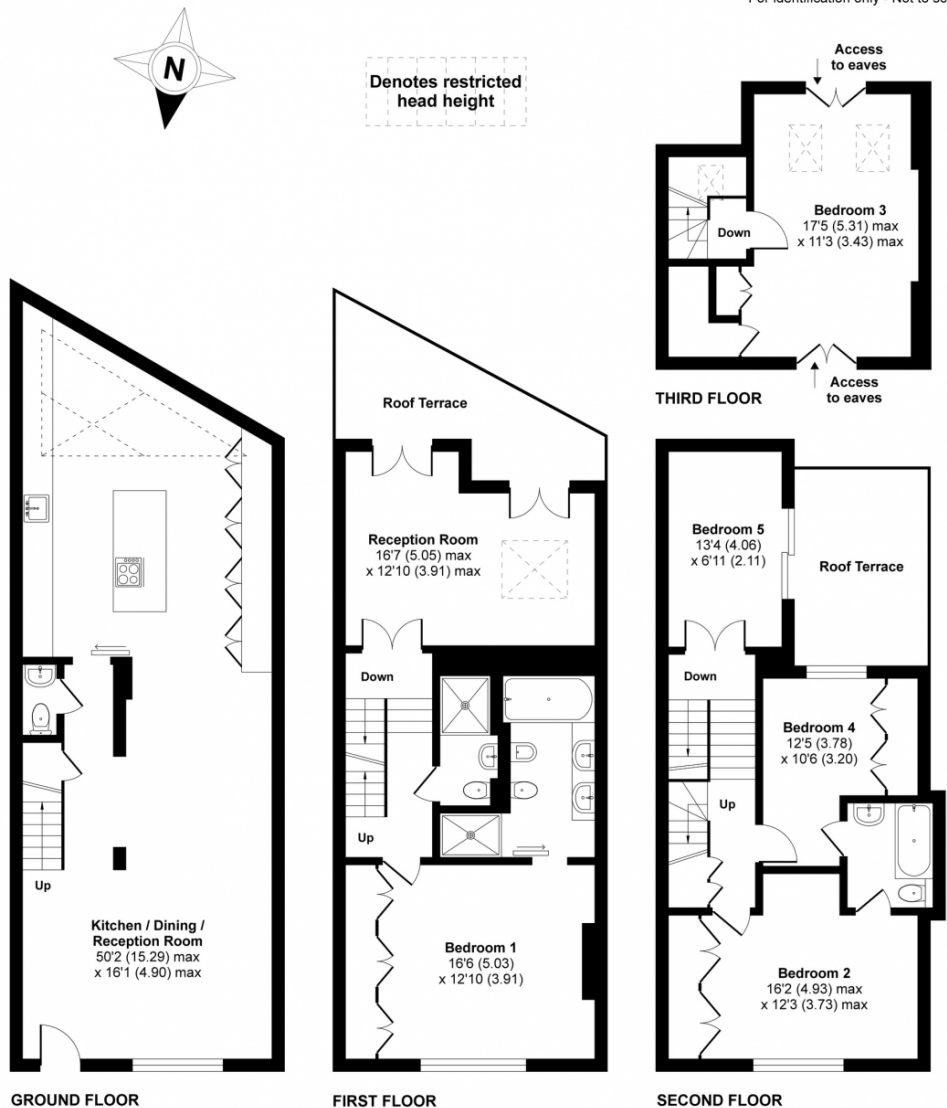
44(0)20 7795 6525

www.interlet.com

Stratford Road, London, W8

Approximate Area = 2625 sq ft / 243 sqm

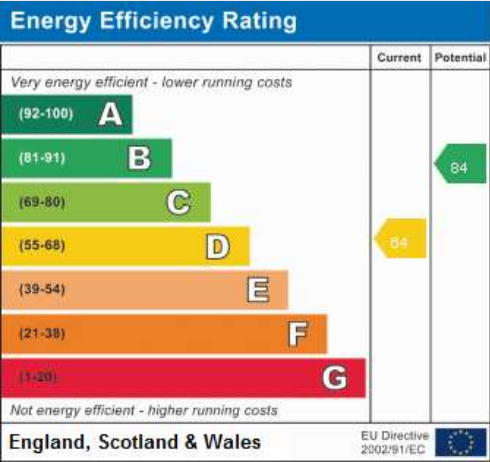
For identification only - Not to scale



Floor plan produced in accordance with RICS Property Measurement Standards incorporating International Property Measurement Standards (IPMS2 Residential). © nichescom 2021. Produced for Interlet Estates Ltd. REF: 693638

Important Notice

Interlet and their clients give notice that: 1) They are not authorised to make or give any representations or warranties in relation to the property, either here or else where. The particulars do not form part of any offer part of any offer or contract and must not be relied upon as statements or representations of fact. 2. Any areas, measurements, distances are approximate. The text, images and plans are for guidance only and are not necessarily comprehensive. It should not be assumed that the property has all necessary planning, building regulation or other contents and Interlet have not tested any services, equipment or facilities. Prospective tenants must satisfy themselves by inspection or otherwise. Please note that the local area may be affected by aircraft noise, you should make your own enquiries regarding any noise in the area before you make an offer.



5 3 2 1 2625 SQFT

interlet

SALES & LETTINGS

Welcome home.