



ROGERS & CO  
MORE THAN JUST ESTATE AGENTS



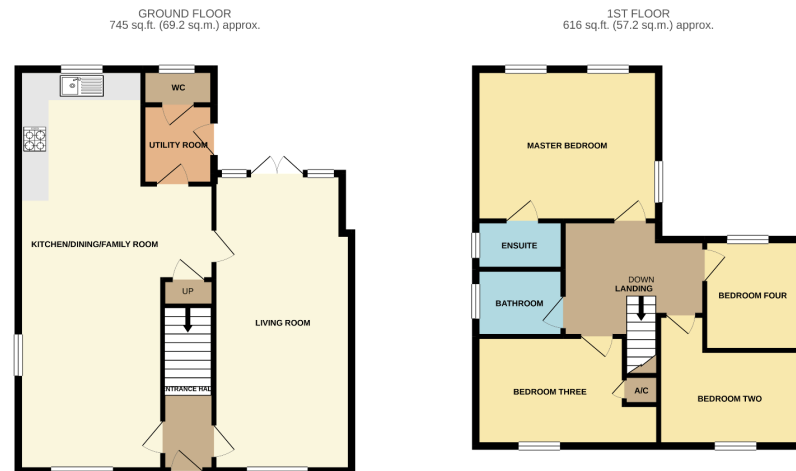
Harvest Road, Market Harborough, Leicestershire

£415,000

4 2 4







TOTAL FLOOR AREA: 1361 sq.ft. (126.4 sq.m.) approx.  
Whilst every attempt has been made to ensure the accuracy of the floorplan contained here, measurements of doors, windows, rooms and any other items are approximate and no responsibility is taken for any error, omission or mis-statement. This plan is for illustrative purposes only and should be used as such by any prospective purchaser. The services, systems and appliances shown have not been tested and no guarantee as to their operability or efficiency can be given.  
 Made with Floorplan 10/2021

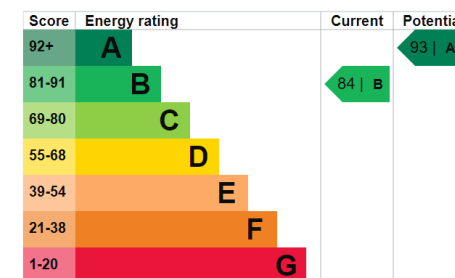


A fantastic four bedroom detached home boasts generous proportions, a beautiful finish throughout, off road parking with a single garage, south facing garden making this a perfect family home!

## Energy efficiency rating for this property

This property's current energy rating is B. It has the potential to be A.

[See how to improve this property's energy performance.](#)



The graph shows this property's current and potential energy efficiency.

Properties are given a rating from A (most efficient) to G (least efficient).

Properties are also given a score. The higher the number the lower your fuel bills are likely to be.

Office: 01858 456 630

7 St Mary's Rd, Market Harborough LE16 7DS

W: [www.rogersand.co](http://www.rogersand.co)

E: [hello@rogersand.co](mailto:hello@rogersand.co)