

16 Three Corner Close, Lubenham, Market Harborough

£325,000

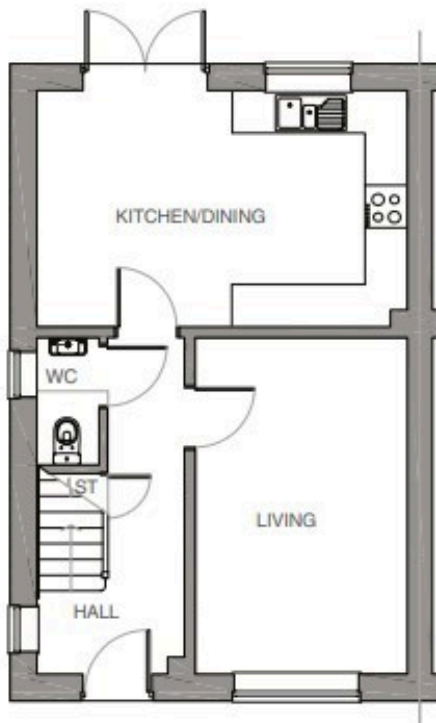
🛏 3 🚗 2 🚗 2



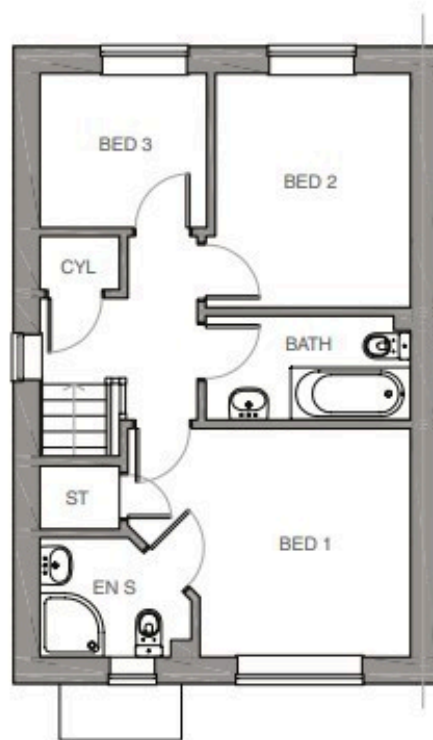
This three-bedroom cottages makes a perfect retreat. The entrance hall, with its handy built-in storage, leads past the spacious living room into the kitchen-dining room. This thoughtfully-designed living space is equipped with top-of-the-range integrated appliances and has French doors which open into the garden. Upstairs, there is a master bedroom with a luxurious en suite shower room and two further bedrooms to the rear which enjoy views of the garden and neighbouring paddock and local open space to the front aspect. The property comes with two parking spaces

Key Features

- Discreet Listing Viewing Highly Recommended
- Two double bedrooms
- Desirable Kitchen Diner overlooking the garden
- Open countryside views to the Front and side/rear of the property
- London can be reached via direct trains from Market Harborough to London
- Rural Location
- Master Bedroom with Ensuit
- Low maintenance landscaped gardens
- Two Parking Spaces
- A6, A14, M1 and M6 are all easily accessible for journeys to Leicester, Cambridge



Ground floor



First floor