



£285,000

TENURE : FREEHOLD

Middle Street, Misterton TA18

Bedrooms : 3

Bathrooms : 2

Reception Rooms : 2

Large terraced home

Two reception rooms

Three double bedrooms

Kitchen-diner

Two bathrooms

Double glazed

McKinlays Estate Agents
 6, The George Shopping Centre, Crewkerne
sales@mckinlayscrewkerne.co.uk | 01460 78277
 Website: <https://mckinlays.globalnoticeboard.com>



Believed to have been built around 1800, this immaculate three-storey home offers generous living space with three double bedrooms. The ground floor features two reception rooms, one of which opens into a stylish kitchen-diner, creating a bright and welcoming heart of the home. The master bedroom boasts a spacious en-suite bathroom, while an additional family bathroom is located on the first floor. On the second floor, two further double bedrooms provide ample accommodation.

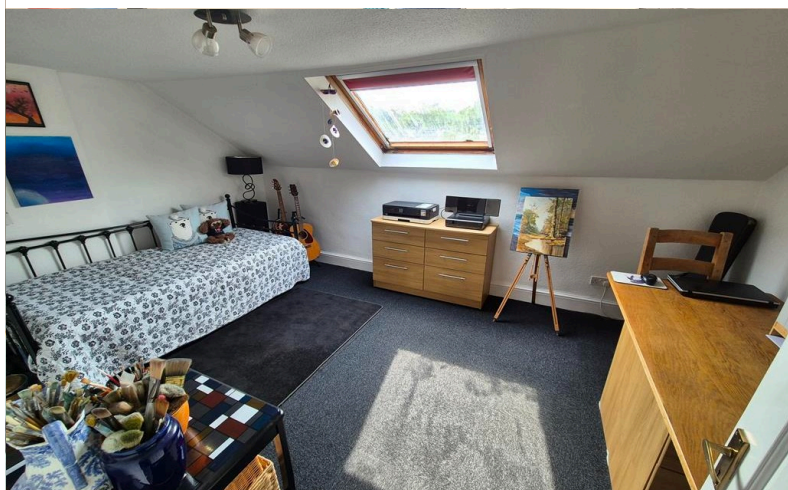
The property is double glazed and benefits from gas central heating, ensuring comfort throughout the year. Outside, the enclosed rear garden is thoughtfully designed with a large patio area, a lawn, and a low-maintenance gravelled section, complete with a garden shed.

The accommodation briefly comprises; living room, second reception room and kitchen, diner on the ground floor. On the first floor there is a master bedroom with en-suite bathroom and a bathroom, on the second floor there are two double bedrooms

Nestled in the attractive village of Misterton, this home enjoys a picturesque setting with charming period properties. Conveniently close to Crewkerne, residents can easily access an excellent range of shops, amenities, and transport links, including the railway station on the London Waterloo line. The A303 provides convenient connectivity to regional towns such as Yeovil and Taunton, while the world heritage coastline is just a 30-minute drive away.







McKinlays Estate Agents
 6, The George Shopping Centre, Crewkerne
sales@mckinlayscrewkerne.co.uk | 01460 78277
 Website: <https://mckinlays.globalnoticeboard.com>



