



3

Bedrooms



1

Bathroom



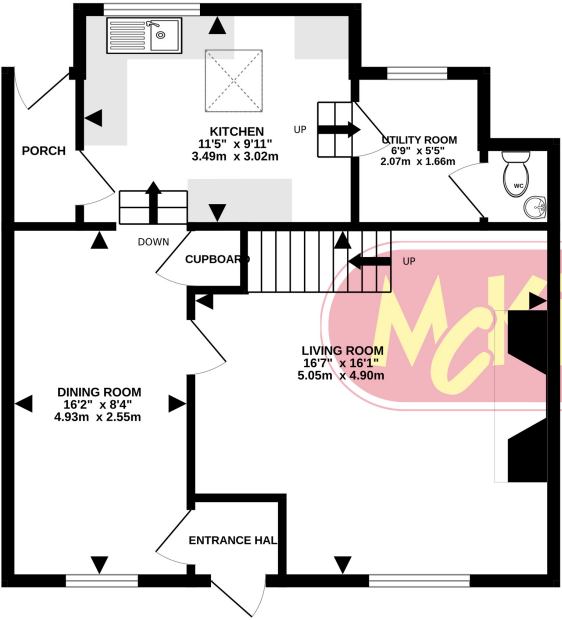
A beautifully presented three-bedroom double fronted 18th century house with good sized enclosed rear garden. The property is double glazed and gas centrally heated, it has been extended providing a light modern kitchen along with utility room and cloakroom. A large inglenook fireplace with bread oven is a standout feature in the living room and the property is being sold with no onward chain.

The accommodation briefly comprises; entrance hall, living room, dining room, kitchen-breakfast room, utility room, cloakroom, and boot room on the ground floor. There are three bedrooms, landing and a bathroom on the first floor.

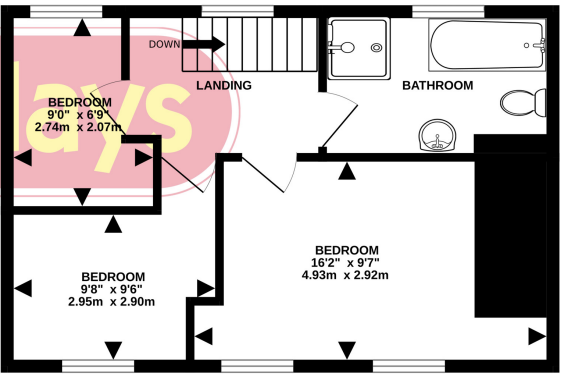
Outside there is an enclosed garden at the rear split into three sections. There is a large patio area immediately adjacent to the rear of the property. A gate leads through into a lawn, followed by a low maintenance gravelled area at the end currently used as a BBQ area by the current owners.

Misterton is an attractive village, largely built of period properties and close to the town of Crewkerne. As well as a railway station (London Waterloo Line) Crewkerne has an excellent range of shops and amenities as well as access to the A303. The regional towns of Yeovil and Taunton with their excellent facilities are within motoring distance, as is the world heritage site coastline approximately 30 mins away by car.

GROUND FLOOR
584 sq.ft. (54.3 sq.m.) approx.



1ST FLOOR
376 sq.ft. (35.0 sq.m.) approx.



TOTAL FLOOR AREA : 961 sq.ft. (89.2 sq.m.) approx.

Whilst every attempt has been made to ensure the accuracy of the floorplan contained here, measurements of doors, windows, rooms and any other items are approximate and no responsibility is taken for any error, omission or mis-statement. This plan is for illustrative purposes only and should be used as such by any prospective purchaser. The services, systems and appliances shown have not been tested and no guarantee as to their operability or efficiency can be given.
Made with Metropix ©2025





EPC

Coming soon

