



 **4**
Bedrooms

 **1**
Bathroom



A beautifully presented detached four bedroom Victorian home. The property has some beautiful Victorian features such as the bay window, flag stone floors and original ceiling rose. The kitchen has been opened to the dining room providing a fantastic family space and there is a utility room and cloakroom. The property is double glazed, and gas centrally heated has an enclosed rear garden as well as larger than average garage and two off-road parking spaces. Complete onward chain.

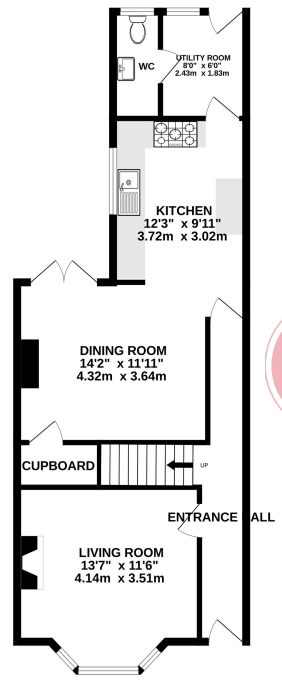
The accommodation briefly comprises entrance hall, living room, dining room, kitchen, utility room and a cloakroom on the ground floor. There are two bedrooms and a family bathroom on the first floor and two further bedrooms on the second floor.

Outside there is an enclosed garden at the front which is lawn. There is a gate at the side providing access to the rear garden. At the rear is an enclosed garden with lawn area and large patio. The garage and off-road parking will also be found at the rear.

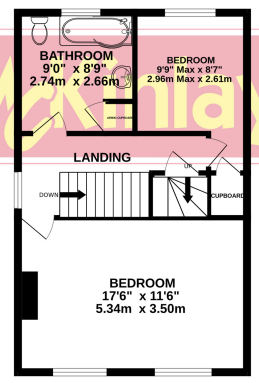
Crewkerne is a small market town situated between Yeovil and Taunton and offers many local amenities, supermarkets including a Waitrose superstore, chemists, banks, doctor's surgery, leisure and recreational facilities including a public swimming pool, pubs, restaurants, schools and churches. There is a local bus service and main line railway station (Waterloo - Exeter).

Yeovil is 9 miles, Taunton and M5 motorway 19 miles and the Dorset Coast 14 miles.

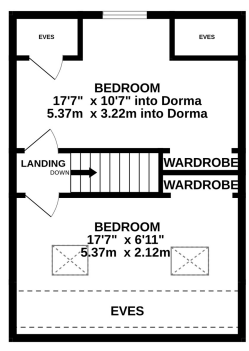
GROUND FLOOR
660 sq.ft. (61.3 sq.m.) approx.



1ST FLOOR
453 sq.ft. (42.0 sq.m.) approx.



2ND FLOOR
411 sq.ft. (38.2 sq.m.) approx.



TOTAL FLOOR AREA : 1523 sq.ft. (141.5 sq.m.) approx.

Whilst every attempt has been made to ensure the accuracy of the floorplan contained here, measurements of doors, windows, rooms and any other items are approximate and no responsibility is taken for any error, omission or mis-statement. This plan is for illustrative purposes only and should be used as such by any prospective purchaser. The services, systems and appliances shown have not been tested and no guarantee as to their operability or efficiency can be given.
Made with Metropix ©2024

