



 **4**
Bedrooms

 **1**
Bathroom



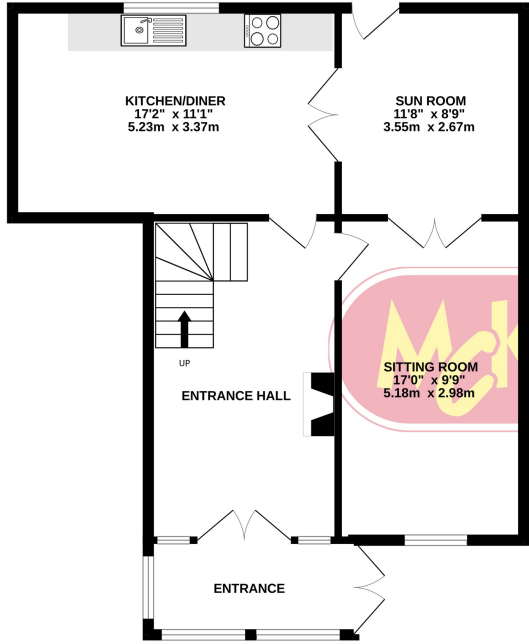
Four bedroom semi-detached house tucked away a quiet central part of Crewkerne. The property is double gazed and centrally heated as well as having a multi fuel stove in the large entrance hall. There is off-road parking and a large, tiered garden at the rear that backs onto Bincombe nature reserve. At the top of the garden is a summer house which along with the deck provides fantastic views across Crewkerne. The property is available with no onward chain.

The accommodation briefly comprises a large, glazed entrance porch, large reception hall, living room, kitchen-diner, and a sun room on the ground floor. The first-floor accommodation is four bedrooms and a family bathroom.

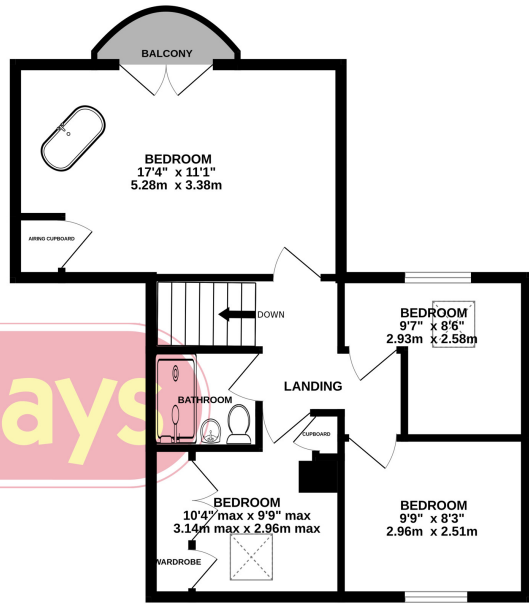
Outside there is off-road parking at the front currently for one vehicle. At the rear there is a courtyard immediately adjacent to the rear of the property. Stone steps lead to the top of the garden where a lawn summer house and decking area will be found. The rest of the garden is in several tiers each has been planted with a variety of shrubs and plants.

Crewkerne is a small market town situated between Yeovil and Taunton and offers many local amenities, supermarkets including a Waitrose superstore, chemists, banks, doctor's surgery, leisure and recreational facilities including a public swimming pool, pubs, restaurants, schools and churches. There is a local bus service and main line railway station (Waterloo - Exeter). Yeovil is 9 miles, Taunton and M5 motorway 19 miles and the Dorset Coast 14 miles.

GROUND FLOOR
682 sq.ft. (63.4 sq.m.) approx.



1ST FLOOR
522 sq.ft. (48.5 sq.m.) approx.



TOTAL FLOOR AREA: 1204 sq.ft. (111.9 sq.m.) approx.
Whilst every attempt has been made to ensure the accuracy of the floorplan contained here, measurements of doors, windows, rooms and any other items are approximate and no responsibility is taken for any error, omission or mis-statement. This plan is for illustrative purposes only and should be used as such by any prospective purchaser. The services, systems and appliances shown have not been tested and no guarantee as to their operability or efficiency can be given.
Made with Metropix ©2023



Energy Efficiency

EPC

Coming soon

