

11



Great

**unique clerkenwell
self-contained showroom
over two floors.**

**-
2,780 sq ft**

Sutton

St



**a unique design-led, dual floor
showroom/retail opportunity
in one of clerkenwell's most
established locations.**

—

2,780 sq ft



a focus on design and space.

Internationally recognised, Clerkenwell is one of the best places to visit for inspiring interior design.

A cluster of showrooms specialising in bathrooms, bedrooms, lighting and office furniture have created the perfect backdrop to Clerkenwell Design Week, which features exhibitions from leading interior designers around the globe.



Image courtesy of clerkenwelldesignweek.com

11 Great Sutton St

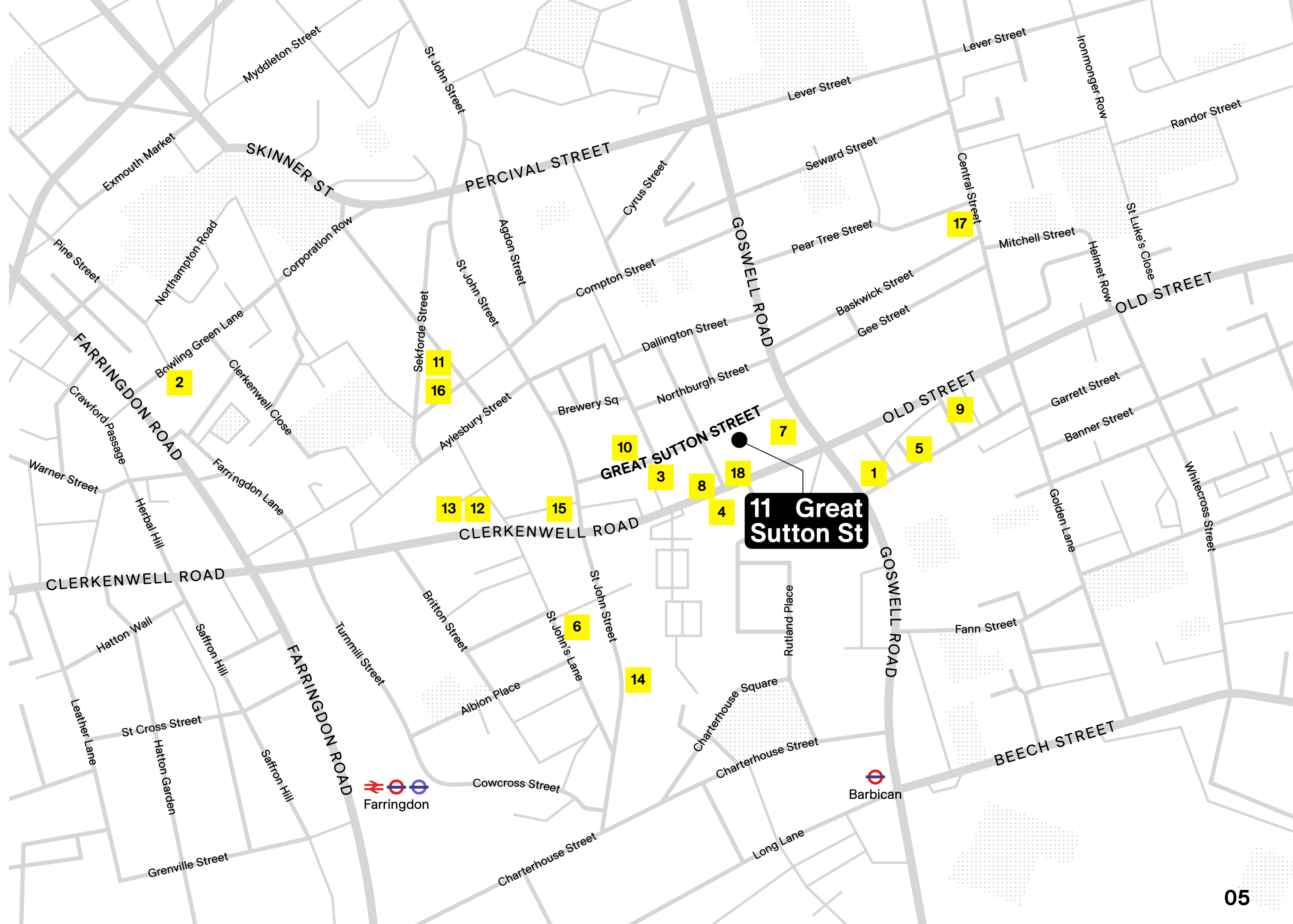
Around the corner...

-  Barbican 500m
-  Farringdon 600m
-  Old Street 1,000m

Showrooms

- 1 Casala
- 2 Carl Hansen & Søn
- 3 Domus
- 4 Duravit
- 5 Frovi
- 6 Gresham
- 7 Hansgrohe
- 8 Kohler
- 9 Lavoro
- 10 Modus
- 11 NARBUTAS
- 12 Nowy Styl & Kusch+Co
- 13 ØRN
- 14 Quadrifoglio
- 15 Solus
- 16 Staverton
- 17 USM Haller
- 18 Vitra & Artek

Location



11 Great Sutton St

49 – 51 Central Street
London, EC1V 8AB



USM Haller Modular Furniture

Neighbours

23 – 25 Great Sutton Street
London, EC1V 0DN



Domus

96 Clerkenwell Road
London, EC1M 5RJL



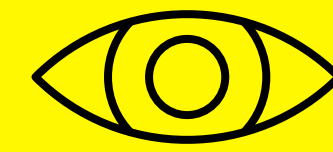
ØRN Furniture



redesigned by Conran + Partners, refurbished for the future.

The showroom / retail unit has been extensively refurbished, ready to meet the needs of multiple retailers.

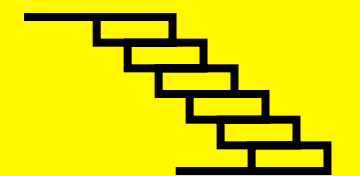
Set over the ground and lower ground floors, the column free space benefits from full width floor to ceiling glazing onto Great Sutton Street and a unique external courtyard on the lower ground floor.



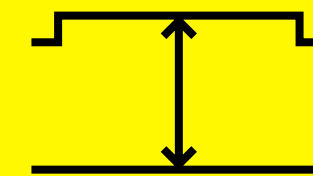
6.3m frontage onto Great Sutton Street



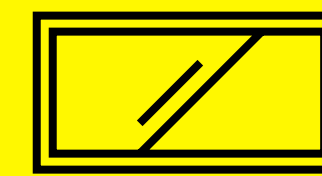
180 sq ft private courtyard



Statement inter connecting stairwell



Up to 3.6m floor to ceiling heights



Large skylight to the ground floor

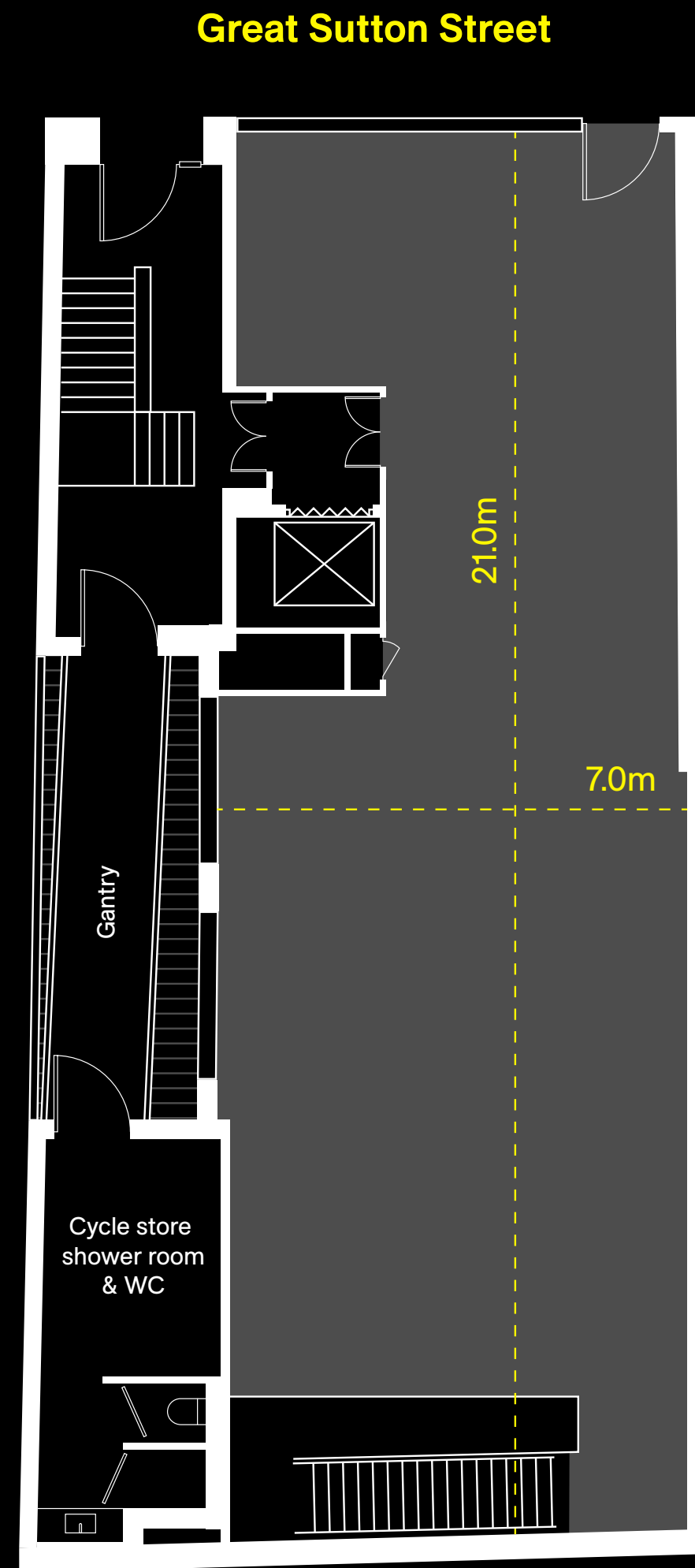


Flexible 'Class E' usage

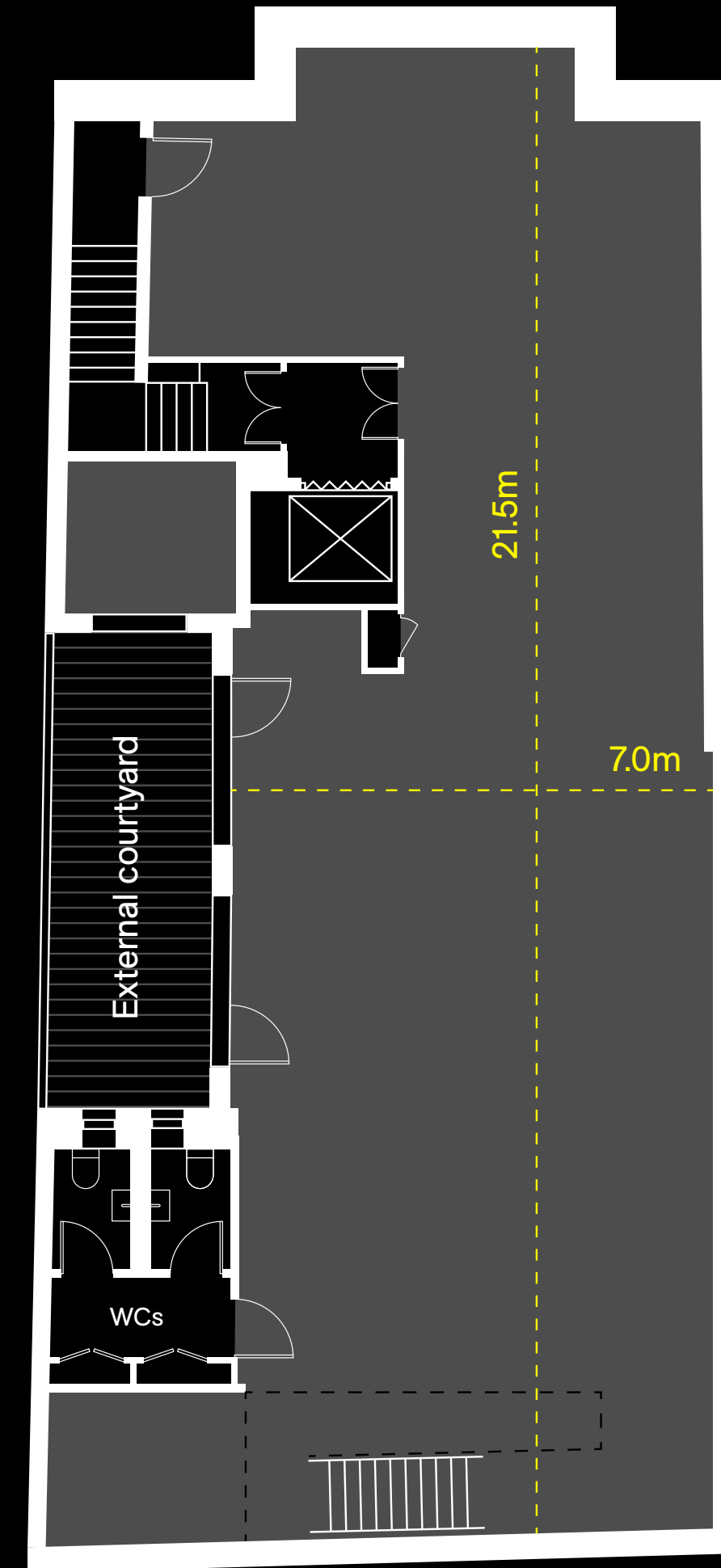
accommodation

Floor	sq ft
Ground Floor	1,223
Lower Ground Floor	1,558
Total	2,781

ground floor



lower ground floor



Areas are approximate and subject to change.
Plans not to scale. For indicative purposes only.



11

Great

11gss.london

For information about available workspace
please visit: 12gss.london

further information



Simon Rinder
simonrinder@pilcher.london
+44 (0)7734 488 286

James Faustino
jamesfaustino@pilcher.london
+44 (0)7834 789 346

Sutton

St

These brief particulars have been prepared as agents for our clients and are intended as a convenient guide to supplement an inspection or survey. Their accuracy is not guaranteed. They contain statements of opinion and in some instances we have relied on information provided by others. You should verify the particulars on your visit to the property and the particulars do not obviate the need for a full survey and all the appropriate enquiries. Accordingly, there shall be no liability as a result of any error or omission in the particulars or any other information given.

April 2024. Reference 2403013. Design by **JAMES&JAMES** | jamesjames.design