

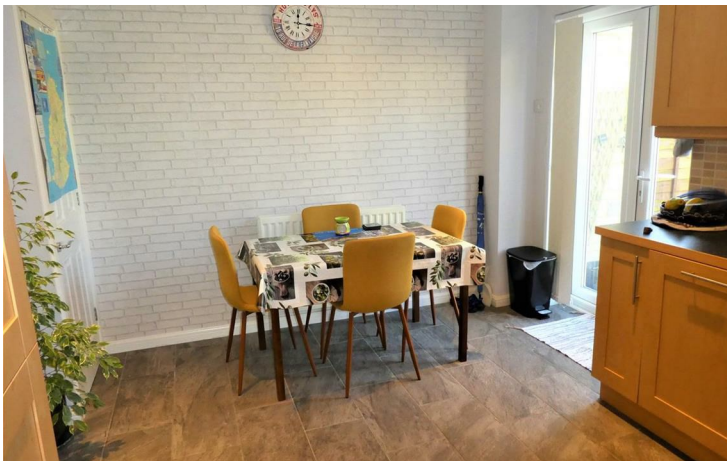


11 Ashleworth Road, Swindon, SN25 2FJ

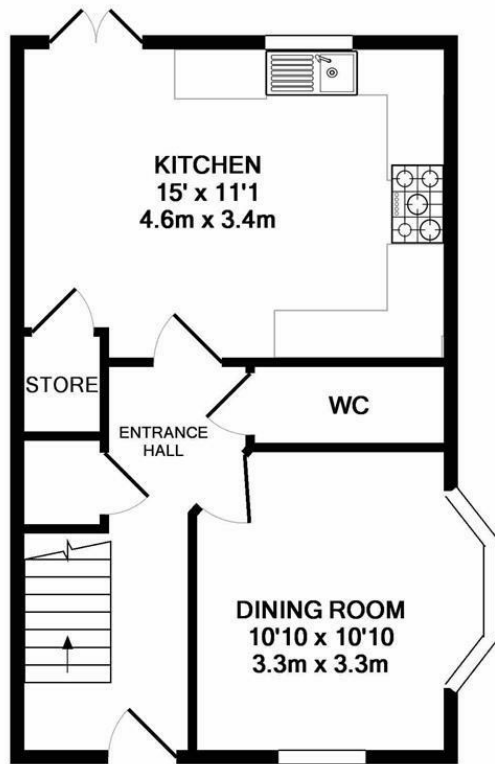
Guide price £265,000

Summary

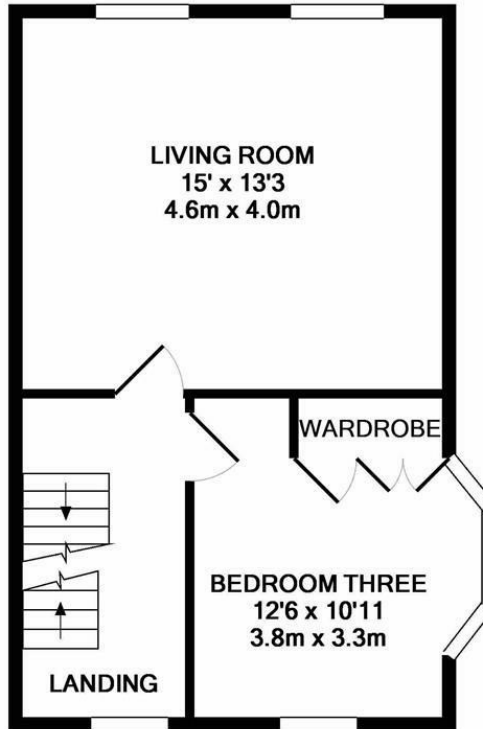
Resides Swindon are delighted to be marketing this STUNNING AND IMMACULATELY PRESENTED 3 bedroom town house. The accommodation comprises, entrance hall with solid oak flooring, downstairs WC, kitchen/breakfast room, dining room/study/family room with bay windows. To the first floor is a large lounge and bedroom number two with a bay window. To the second floor is the main bedroom with built in wardrobes and en suite shower room, also bedroom three and the family bathroom. To the rear is a low maintenance rear garden Other benefits is a garage with parking for two cars. EARLY VIEWINGS RECOMMENDED TO AVOID DISAPPOINTMENT.



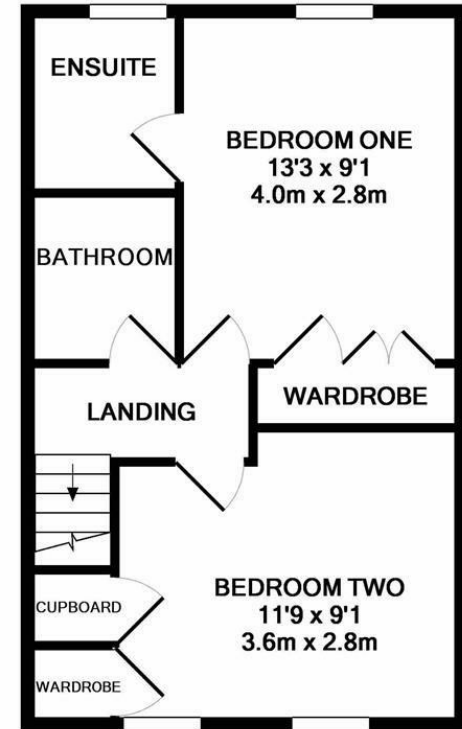




GROUND FLOOR
APPROX. FLOOR
AREA 379 SQ.FT.
(35.2 SQ.M.)



1ST FLOOR
APPROX. FLOOR
AREA 378 SQ.FT.
(35.1 SQ.M.)



2ND FLOOR
APPROX. FLOOR
AREA 371 SQ.FT.
(34.5 SQ.M.)

TOTAL APPROX. FLOOR AREA 1129 SQ.FT. (104.9 SQ.M.)

Whilst every attempt has been made to ensure the accuracy of the floor plan contained here, measurements of doors, windows, rooms and any other items are approximate and no responsibility is taken for any error, omission, or mis-statement. This plan is for illustrative purposes only and should be used as such by any prospective purchaser. The services, systems and appliances shown have not been tested and no guarantee as to their operability or efficiency can be given

Made with Metropix ©2020

