



11 Delius Close, Swindon, SN25 2PD

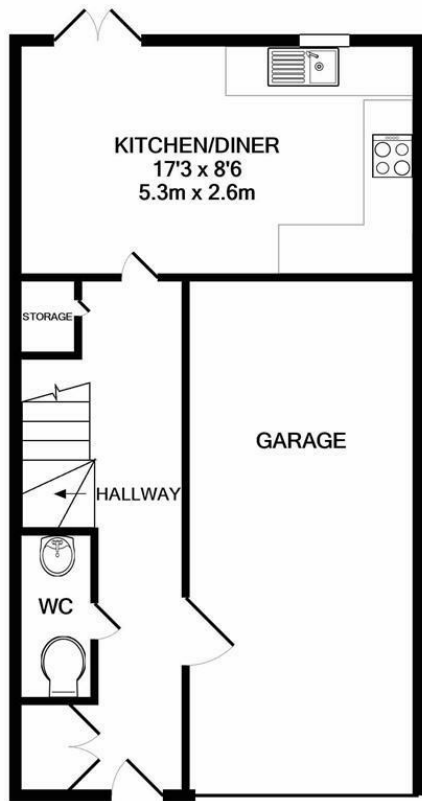
Offers in excess of £250,000

Summary

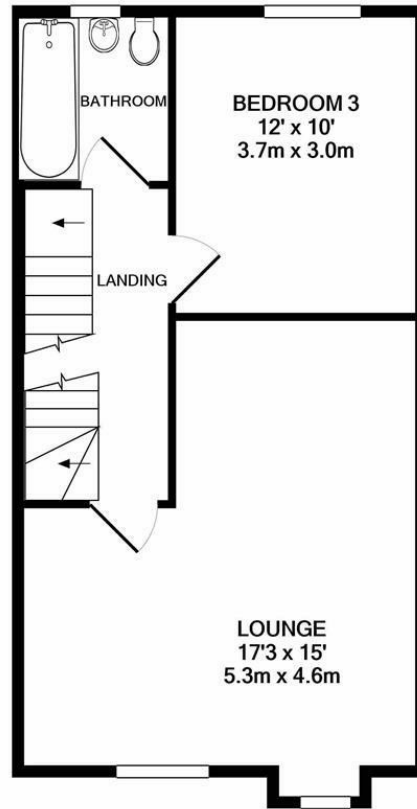
Resides Swindon are delighted to be marketing this STUNNING AND IMMACULATELY PRESENTED 3/4 bedroom town house. This property is very spacious and light and airy with stunning views of a green area to the front. The accommodation comprises, entrance hall, downstairs WC, kitchen/breakfast room, to the first floor is a large lounge/diner and with windows that overlook the views by tadpole village. Also to the first floor is bedroom number two and the family bathroom. To the second floor is the main bedroom with built in wardrobes and en suite shower room, also two other bedrooms which one can be used as a study. To the rear is a good size garden with mature shrubbery and trees, the garden is mainly laid to lawn with a patio area. To the front is the GARAGE and PARKING. EARLY VIEWINGS RECOMMENDED TO AVOID DISAPPOINTMENT.t



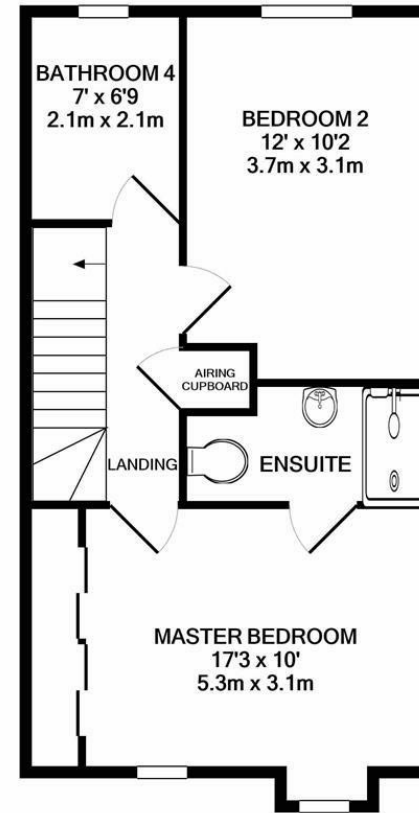




GROUND FLOOR



1ST FLOOR



2ND FLOOR

Whilst every attempt has been made to ensure the accuracy of the floor plan contained here, measurements of doors, windows, rooms and any other items are approximate and no responsibility is taken for any error, omission, or mis-statement. This plan is for illustrative purposes only and should be used as such by any prospective purchaser. The services, systems and appliances shown have not been tested and no guarantee as to their operability or efficiency can be given
Made with Metropix ©2020

