

14 Seacole Crescent, Swindon, SN1 4GN

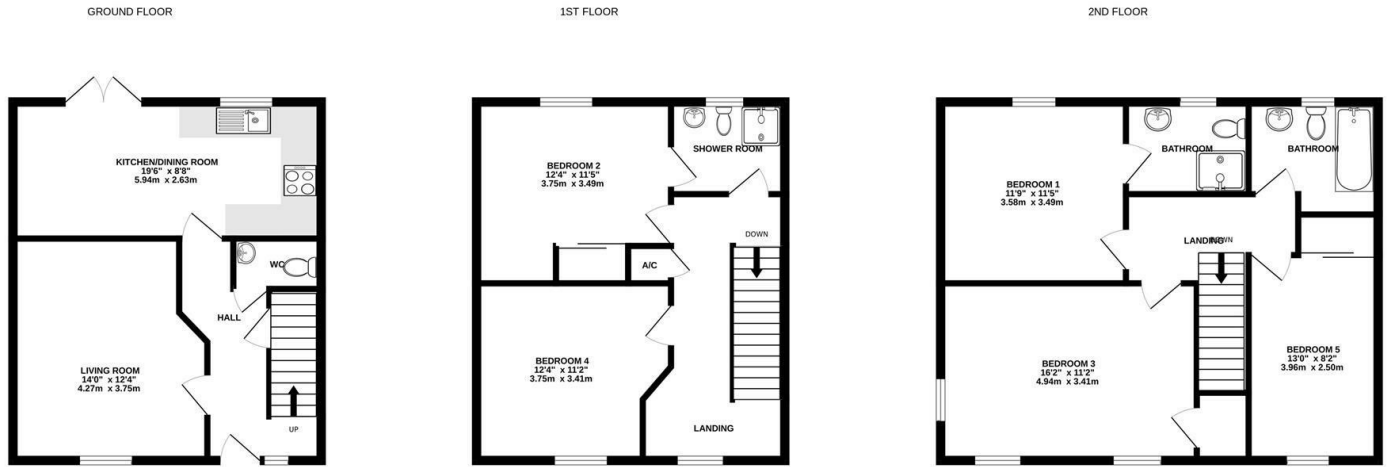
Guide price £385,000

Resides Swindon are delighted to be marketing this impressive property set in the sought after location of 'Old Town'. The property offers on the ground floor an open plan kitchen/diner, lounge and cloakroom. On the first floor you have two further bedrooms with en-suite. Then on the top floor you have three further bedrooms and en-suite. The property has off road parking and a carport. To the rear is a low maintenance landscaped rear garden. EARLY VIEWINGS RECOMMENDED TO AVOID DISAPPOINTMENT.

DISCLAIMER

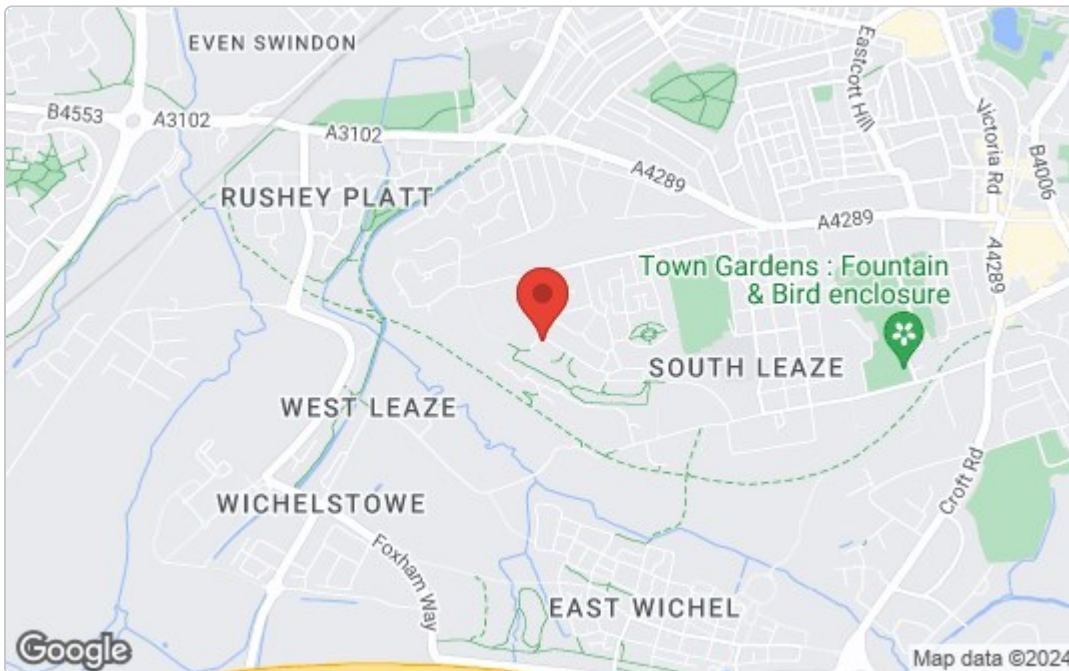
Floor plans-These are intended as a guide only. Dimensions are approximate. Not to scale. We have taken every care with the preparation of these details.

Floor Plan

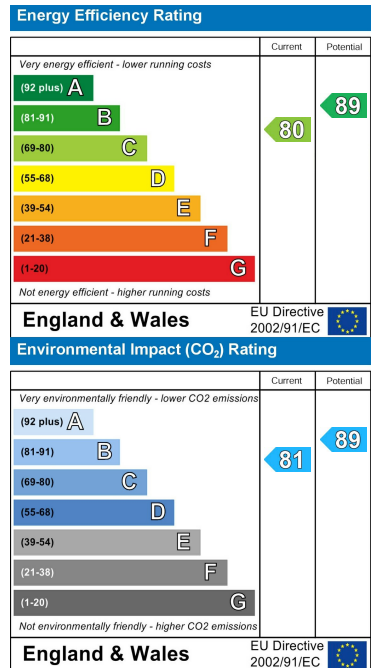


Whilst every attempt has been made to ensure the accuracy of the floorplan contained here, measurements of doors, windows, rooms and any other items are approximate and no responsibility is taken for any error, omission or mis-statement. This plan is for illustrative purposes only and should be used as such by any prospective purchaser. The services, systems and appliances shown have not been tested and no guarantee as to their operability or efficiency can be given.
Made with Metropix ©2024

Area Map



Energy Efficiency Graph



These particulars, whilst believed to be accurate are set out as a general outline only for guidance and do not constitute any part of an offer or contract. Intending purchasers should not rely on them as statements of representation of fact, but must satisfy themselves by inspection or otherwise as to their accuracy. No person in this firm's employment has the authority to make or give any representation or warranty in respect of the property.