



34 Sutton Park, Swindon, SN26 7BB

Guide price £435,000

Summary

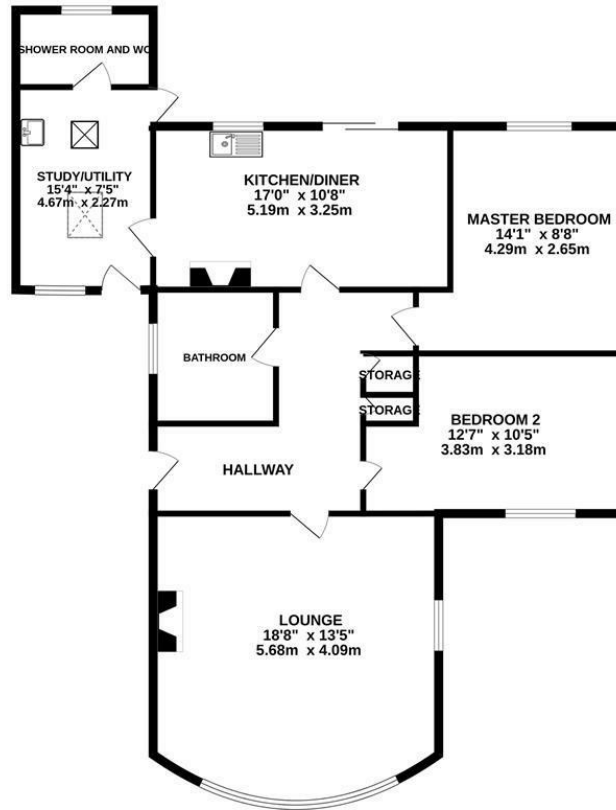
Resides Swindon are delighted to be marketing this stunning and immaculately presented and updated two bedroom detached bungalow set in the sought after location of Sutton Park, Blunsdon. The accommodation comprises, entrance hall, large lounge with a wood burning stove and bay window, two bedrooms, family bathroom, kitchen/dining room, study/utility room, shower room and WC. To the rear is a private mature garden with patio area, to the side is a gated entrance which sweeps to a blocked paved driveway. **EARLY VIEWINGS RECOMMENDED TO AVOID DISAPPOINTMENT.**



Floor plans-These are intended as a guide only. Dimensions are approximate. Not to scale. We have taken every care with the preparation of these details.



GROUND FLOOR
1309 sq.ft. (121.6 sq.m.) approx.



TOTAL FLOOR AREA: 1309 sq.ft. (121.6 sq.m.) approx.

Whilst every attempt has been made to ensure the accuracy of the floorplan contained herein, measurements of doors, windows, rooms and any other items are approximate and no responsibility is taken for any error, omission or mis-statement. This plan is for illustrative purposes only and should be used as such by any prospective purchaser. The services, systems and appliances shown have not been tested and no guarantee as to their operability or efficiency can be given.
Made with Metropack C2024

