



22 Wrenswood, Swindon, SN3 5AR

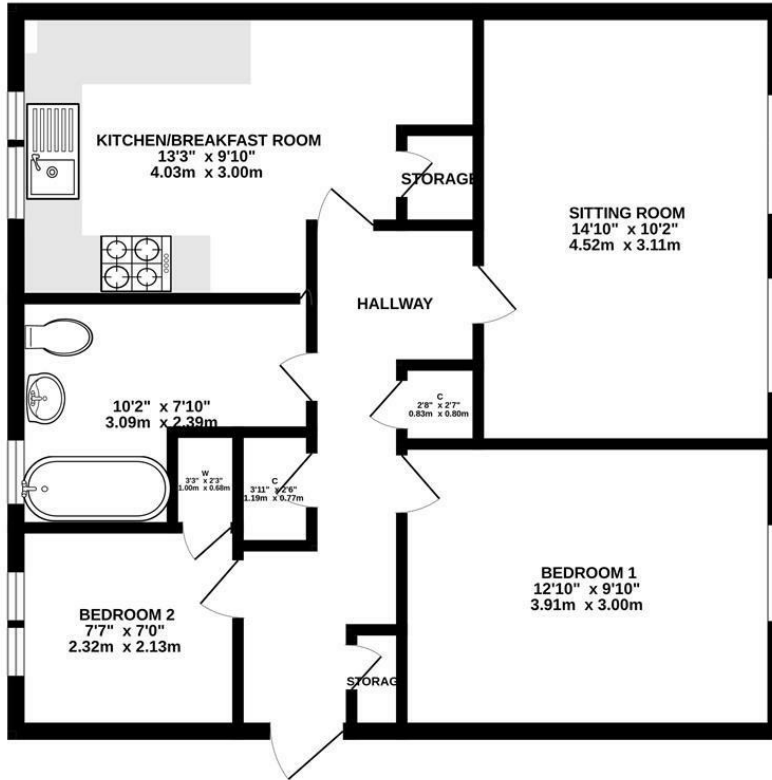
**Guide price £149,995**

Resides Swindon are delighted to be marketing this sizable and spacious two bedroom first floor apartment set in the sought after location of Covingham. This light and airy property comprises, entrance hall, fully tiled bathroom with underfloor heating, two bedrooms, kitchen/dining room with ample storage cupboards, lounge. The property benefits a garage and access to the front for a clothes line. The property is set around mature trees and green areas. **EARLY VIEWINGS RECOMMENDED TO AVOID DISAPPOINTMENT.**

**MAINTENANCE/SERVICE CHARGE AND BUILDING  
INSURANCE**

ALL INCLUDED THIS IS APPROXIMATELY £60 A  
MONTH

GROUND FLOOR



TOTAL FLOOR AREA: 614sq.ft. (57.0 sq.m.) approx.

Whilst every attempt has been made to ensure the accuracy of the floorplan contained herein, measurements of doors, windows, rooms and any other items are approximate and no responsibility is taken for any error, omission or mis-statement. This plan is for illustrative purposes only and should be used as such by any prospective purchaser. The services, systems and appliances shown have not been tested and no guarantee, as to their operability or efficiency can be given.  
Made with Metropix ©2023

Area Map



Energy Efficiency Graph

Energy Efficiency Rating		Current	Potential
Very energy efficient - lower running costs			
(92 plus) <b>A</b>			
(81-91) <b>B</b>			
(69-80) <b>C</b>			
(55-68) <b>D</b>			
(39-54) <b>E</b>			
(21-38) <b>F</b>			
(1-20) <b>G</b>			
Not energy efficient - higher running costs			
<b>England &amp; Wales</b>		EU Directive 2002/91/EC	
Environmental Impact (CO <sub>2</sub> ) Rating		Current	Potential
Very environmentally friendly - lower CO <sub>2</sub> emissions			
(92 plus) <b>A</b>			
(81-91) <b>B</b>			
(69-80) <b>C</b>			
(55-68) <b>D</b>			
(39-54) <b>E</b>			
(21-38) <b>F</b>			
(1-20) <b>G</b>			
Not environmentally friendly - higher CO <sub>2</sub> emissions			
<b>England &amp; Wales</b>		EU Directive 2002/91/EC	

These particulars, whilst believed to be accurate are set out as a general outline only for guidance and do not constitute any part of an offer or contract. Intending purchasers should not rely on them as statements of representation of fact, but must satisfy themselves by inspection or otherwise as to their accuracy. No person in this firm's employment has the authority to make or give any representation or warranty in respect of the property.