



58 Moor Lane, Hutton

Offers in Region of **£800,000**





58 Moor Lane

Hutton, Preston

Uniquely luxurious 6-bed detached house in exclusive neighbourhood. Stylish architectural design, high-end finishes, open-plan layout with seamless indoor-outdoor flow & Bi-Fold doors. Versatile living space, home gym, annexe accommodation, garage with gated parking & mature garden! Step inside...

Council Tax band: F

Tenure: Freehold

- Impressive Detached House
- 5/6 Bedrooms & 4 Bathrooms
- Open Plan Living w/ Bi Folds
- Expansive Mature Garden
- Garage & Gated Parking
- Sleek & Stylish Integrated Kitchen
- Home Gym
- Annex Style Accommodation
- Great Local Amenities
- Transport & Travel Links





Welcome Home

Behind electric gates you will find your own piece of paradise with this impressive, extended detached house which sits on a generous and private plot with mature garden, garage, gym and annex. Larger families will find all the space they need here and the open plan living is perfect for large gatherings and for entertaining.

The Living Space

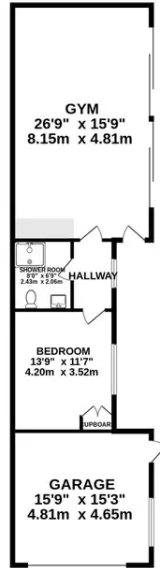
Perfectly situated to make the most of that glorious garden you will find the extended, open plan living at the rear of the house. High spec wood effect flooring extends through the living areas and bi-folds open from the lounge to the rear. There is a modern wood burning stove in the lounge area and double doors open to the hallway and also to the games room at the side. The space is perfect for families and for entertaining. The kitchen is open plan and sleek with concealed open cabinets and integrated appliances. No expense has been spared with the appliances and you will find a Smeg double oven, Smeg induction hob, additional convection oven and a large, glass fronted wine chiller in addition to the integral fridge freezer and dishwasher. There is a separate utility room and ground floor cloakroom.



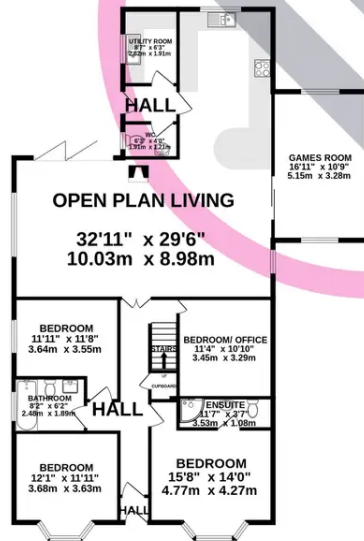
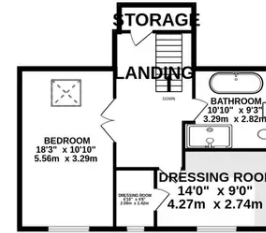
Bedrooms & Bathrooms

On the ground floor there are four generous bedrooms one of which is currently used as a home office. The bay fronted bedrooms to the front have an elegant feel and there is an en-suite shower room in addition to the family bathroom. Plantation blinds to the front create an elegant feel and you will find the master bedroom upstairs within a suite of rooms incorporating a stylish master bathroom and dressing room.

GROUND FLOOR
2623 sq.ft. (243.7 sq.m.) approx.



1ST FLOOR
601 sq.ft. (55.8 sq.m.) approx.



TOTAL FLOOR AREA : 3224 sq.ft. (299.5 sq.m.) approx.

Whilst every attempt has been made to ensure the accuracy of the floorplan contained here, measurements of doors, windows, rooms and any other items are approximate and no responsibility is taken for any error, omission or mis-statement. This plan is for illustrative purposes only and should be used as such by any prospective purchaser. The services, systems and appliances shown have not been tested and no guarantee as to their operability or efficiency can be given.

Made with Metropix ©2024

You can include any text here. The text can be modified upon generating your brochure.

