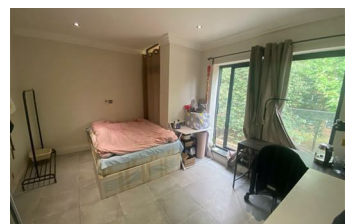




5 Lotus Mews, London, N19 4BJ £4,200 Per Month

A lovely new development within walking distance to Archway Tube Station while also being within proximity to all the shops that can be found on Holloway Road.

While being modern and energy efficient, still maintaining substantial character being in a quiet cul-de-sac.



- New Build
- 2 Bathrooms
- High EPC
- Private Patio
- Walking distance to Archway tube station
- 4 Bedrooms
- Integrated appliances



Lettings and Property Management

143 Tottenham Lane, Crouch End London N8 9BJ

T. 020 8348 8833/ 020 8348 8844

F. 020 8348 6529

E. lettings@thepropertycompany.co.uk

W. www.thepropertycompany.co.uk