



## 139 Greyhound Road, London, N17 6XR £795 PCM

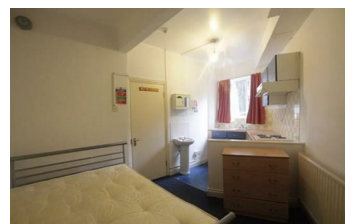
\*\*\* WATER | COUNCIL TAX | GAS | ELECTRIC | INCLUDED IN RENT \*\*\*  
SINGLE OCCUPANTS ONLY. The Property Company are delighted to present this first floor double bedsit. The property features a double bed with an open plan fully-fitted equipped kitchen with private use.

The flat has shared use of bathroom with w/c and spacious lounge area.

Shared use of the rear garden.

Located within short walking distance of shops, bars and Bruce Grove station. Offered furnished. The rent includes all bills except internet.

Please call our lettings team to arrange an immediate viewing.



- Major bills included see description
- Sharing Bathroom
- Close to Shops
- Bedsit
- Furnished
- Open Plan Kitchen
- Close To Bruce Grove Station



### Lettings and Property Management

143 Tottenham Lane, Crouch End London N8 9BJ

T. 020 8348 8833/ 020 8348 8844

F. 020 8348 6529

E. [lettings@thepropertycompany.co.uk](mailto:lettings@thepropertycompany.co.uk)

W. [www.thepropertycompany.co.uk](http://www.thepropertycompany.co.uk)