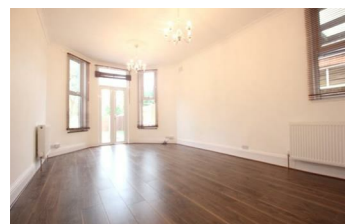




30B Palmerston Road, London, N22 8RG £1,950 PCM

The Property Company are delighted to bring to the market this lovely two bedroom garden flat located in a beautiful residential road in the heart of Bounds Green. The property boasts one large double bedrooms, one large reception/diner room, one single bedroom, a separate fitted kitchen and bathroom with bathtub/integrated shower/wc. You have access to a well maintained patio/garden through the reception room and kitchen. The property is well insulated and has double glazed windows throughout the flat. Offered largely unfurnished;any requests subject to negotiation.

There is one off street parking space for one car; Please call our lettings team to arrange an immediate viewing.



- Stunning 2 Bedroom Ground Floor Flat
- Large Reception
- Offered largely unfurnished; Any requests subject to negotiation
- Council Tax Band: D
- Access to a lovely private garden
- Separate Fitted Kitchen
- Off Street Parking Available (for 1 car only)
- Brand Newly Refurbished prior to the current tenancy
- Exclusive of all bills
- EPC : D



Lettings and Property Management

143 Tottenham Lane, Crouch End London N8 9BJ

T. 020 8348 8833/ 020 8348 8844

F. 020 8348 6529

E. lettings@thepropertycompany.co.uk

W. www.thepropertycompany.co.uk