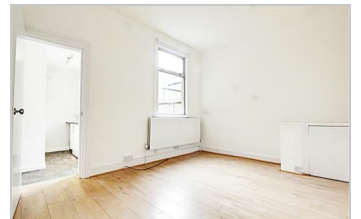




## 1 Leopold Road, Edmonton, N18 2DY £2,495 PCM

Leopold Road is located on a residential close which is conveniently located within a short distance of the a406 North Circular Road, allowing for convenient access to other parts of London. It is also moments away from Angel Road mainline railway station.

The property comprises four spacious double bedrooms, large reception, shower room, fitted kitchen and a very large private garden.



- End Of Terrace House
- Four Bedrooms
- Unfurnished
- Large Living Room
- Family Bathroom
- EPC Rating E
- Fitted Kitchen
- Garden
- Council Tax Band: C



### Lettings and Property Management

143 Tottenham Lane, Crouch End London N8 9BJ

T. 020 8348 8833/ 020 8348 8844

F. 020 8348 6529

E. [lettings@thepropertycompany.co.uk](mailto:lettings@thepropertycompany.co.uk)

W. [www.thepropertycompany.co.uk](http://www.thepropertycompany.co.uk)