



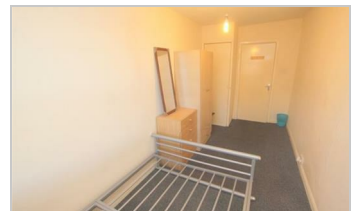
## 23 Crouch Hill, London, N4 4AP £1,250 PCM

The Property Company are delighted to present this spacious two bedroom first floor flat above commercial premises situated on Crouch Hill.

The property comprises of two good size double bedrooms, a separate living room, separate fully fitted kitchen and bathroom with w/c. Located in the popular Finsbury Park area and situated within moments of local amenities, bars, restaurants and 7 minutes walk of Finsbury Park Station.

Available from September 2021. Offered furnished.

Please call our lettings team to arrange an immediate viewing and avoid disappointment.



- Two Double Bedroom Flat
- Offered Furnished
- Exclusive of bills
- Sole Managing Agents
- Located nearly all local amenities, shops, restaurants
- Perfect for students or professional sharers seeking accommodation in Central Location
- Situated above commercial premises
- EPC : D



### Lettings and Property Management

143 Tottenham Lane, Crouch End London N8 9BJ

T. 020 8348 8833/ 020 8348 8844

F. 020 8348 6529

E. [lettings@thepropertycompany.co.uk](mailto:lettings@thepropertycompany.co.uk)

W. [www.thepropertycompany.co.uk](http://www.thepropertycompany.co.uk)