



Flat 4, Grovemere House Beckingham Street, Tolleshunt Major, Maldon, CM0 8JC £1,100 Per Month

- Modern Luxury Apartment
- Luxury Modern Kitchen and Bathroom
- Triple Glazed Windows
- Popular Village Location
- Two Bedrooms
- Open Plan Living Space
- Modern Technology Throughout
- Available Now

Grovemere House Beckingham Street, Maldon CM9

810

Welcome to Beckingham Street, Tolleshunt Major - a charming location for this recently converted apartment. This property boasts modern luxury accommodation including 1 reception room, 2 bedrooms, and 1 bathroom, making it an ideal space for professionals looking for a stylish living space.

As you step into this apartment, you'll be greeted by an open plan living area. The impressive style of the interior adds a touch of elegance to the space.

Located in the heart of Tolleshunt Major, this apartment offers convenience and comfort in one package. Available Now.



2



1

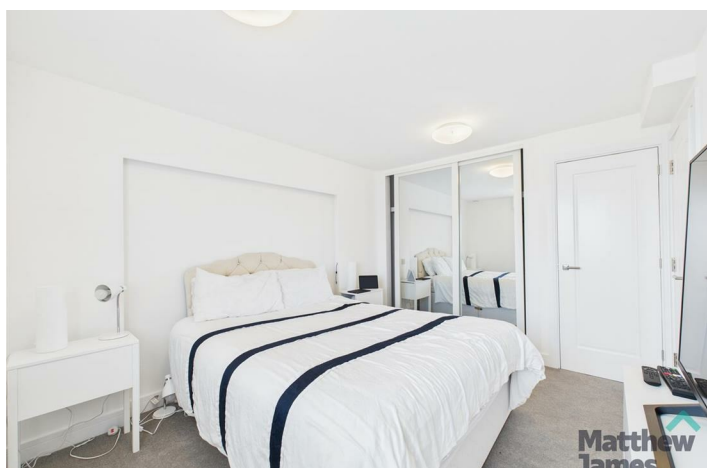
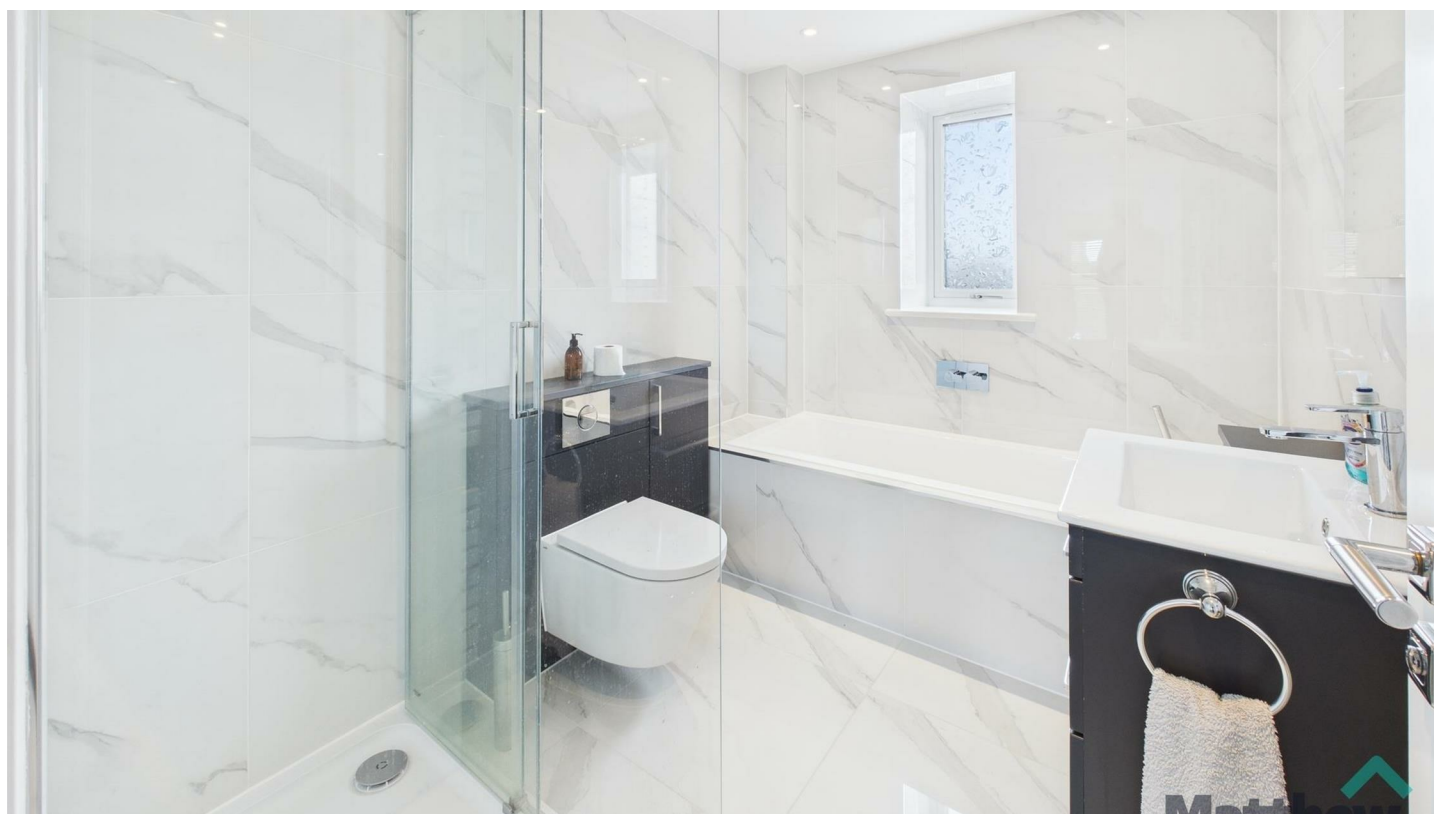


1



C

Council Tax Band: A



Entrance/Hallway

Camera phone entry, electric wall mounted heater, spotlights. Opening to:

Open Plan Living Area

15'10" x 13'2"

Windows to front and side, Juliet balcony to side. Comprehensively fitted modern kitchen with quartz worktop and inset single bowl sink and mixer tap over and a range of cupboards and drawers under. Matching range of wall mounted units. Four ring induction hob with extractor over, electric oven and microwave, integrated fridge/freezer, washing machine and dishwasher.

Bedroom One

9'8" x 12'3"

A double bedroom with built in wardrobes with sliding doors. Airing cupboard. Window to side.

Bedroom Two

6'10" x 8'8"

With window to side.

Bathroom

6'9" x 8'8"

A luxury suite comprising bath with shower attachment, shower cubicle with rainfall shower head, closed cistern W.C, hand wash basin inset to vanity unit, illuminate LED clock mirror, fully tiled, heated towel rail.

Tenancy Information

The rent is exclusive of utilities and council tax.

Minimum term: 12 months

Deposit: £1,269.00

Council Tax Band: A

Availability: Now

EPC Rating: C

No Pets

Non Smokers

Flat has the option of unfurnished/furnished, please ask agent for more information

MJPC is a member of propertymark which is a client money protection scheme, and also a member of The Property Ombudsman, which is a redress scheme. You can find out more details on the agent's website or by contacting the agent directly

Relevant Letting Fees

As well as paying the rent, you may also be required to make the following permitted payments.

Permitted payments:

Before the tenancy starts (payable to Matthew James Property Consultants, "the Agent")

Holding Deposit: 1 weeks' rent

Deposit: 5 weeks' rent

During the tenancy (payable to the Agent):

Payment of £50 for the variation, assignment or novation of the tenancy (capped at £50 or reasonable costs)

Payment of interest for the late payment of rent at a rate of 3% above the base rate of the Bank of England.

Payment up to £100.00 for the reasonably incurred costs for the loss of keys/security devices.

Payment of any unpaid rent or other reasonable costs associated with your early termination of the tenancy.

MJPC is a member of propertymark which is a client money protection scheme, and a member of The Property Ombudsman, which is a redress scheme. You can find out more details on the agent's website or by contacting the agent directly.

Viewings

Strictly by prior appointment with the Letting Agent.

If you wish to proceed with this property following your viewing then please supply an application either directly to the office or via our website - www.matthewjamespc.co.uk. Select the property in question and click "Register Interest"



These particulars, whilst believed to be accurate are set out as a general outline only for guidance and do not constitute any part of an offer or contract. Intending tenants should not rely on them as statements of representation of fact, but must satisfy themselves by inspection or otherwise as to their accuracy. No person in this firm employment has the authority to make or give any representation or warranty in respect of the property.

Viewings

Viewings by arrangement only. Call 01206 580499 to make an appointment.

EPC Rating:

C

