



House - Terraced (EPC Rating: C)

ALLINGTON ROAD, HARROW, HA2 6AL

Per Month

£2,200 Per



# 3 Bedroom House - Terraced located in Harrow

THREE BEDROOM HOUSE IN A QUIET CUL DE SAC LOCATED 0.7 MILES TO NORTH HARROW STATION - AMPLE PARKING AND AVAILABLE JANUARY 2026

This charming terraced house boasts three bedrooms, perfect for a growing family or those in need of extra space. The property features a cosy reception room, ideal for relaxing or entertaining guests.

One of the standout features of this property is its location in a quiet cul de sac, ensuring peace and tranquillity. Parking is a breeze with plenty of spaces out the front, making it convenient for both residents and visitors.

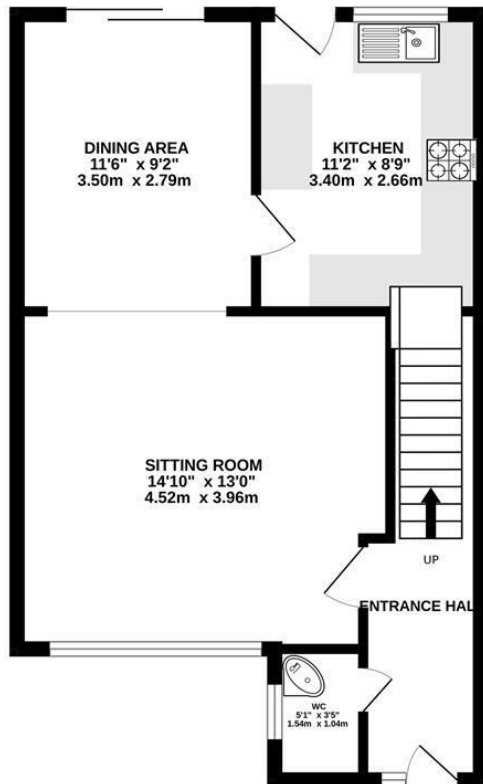
For those who rely on public transport, there are 3x stations N. Harrow, W. Harrow and Harrow on the Hill. All London Underground, providing easy access to the rest of the city. Additionally, Northwick Park Hospital is approximately 2 miles from the property, offering reassurance in case of any medical emergencies.



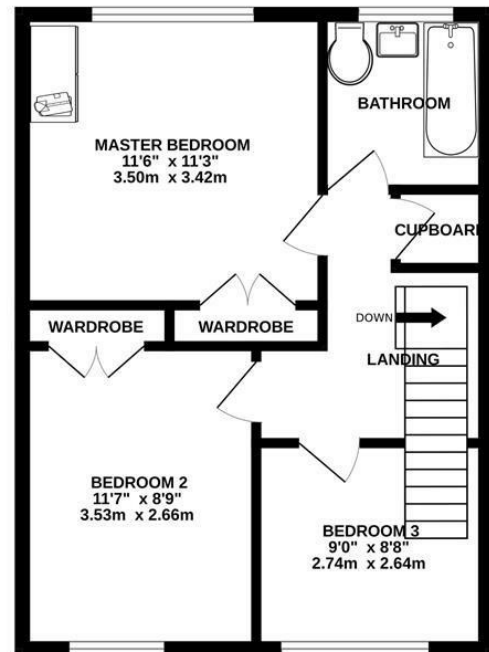


WATFORD LETTINGS | 12 MARKET STREET, WATFORD, HERTFORDSHIRE, WD18 0PD

GROUND FLOOR



1ST FLOOR

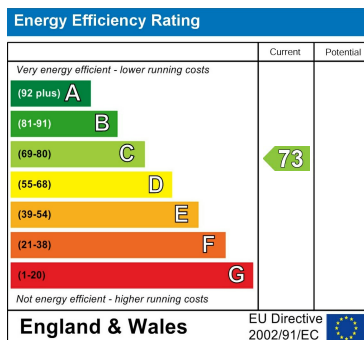


Whilst every attempt has been made to ensure the accuracy of the floorplan contained here, measurements of doors, windows, rooms and any other items are approximate and no responsibility is taken for any error, omission or mis-statement. This plan is for illustrative purposes only and should be used as such by any prospective purchaser. The services, systems and appliances shown have not been tested and no guarantee as to their operability or efficiency can be given.  
Made with Metropix ©2024

Council Tax Band

C

Energy Performance Graph



Call us on

01923 220 012

[enquiries@warrenanthony.co.uk](mailto:enquiries@warrenanthony.co.uk)

[www.warrenanthony.co.uk](http://www.warrenanthony.co.uk)

Agents Note: Whilst every care has been taken to prepare these particulars, they are for guidance purposes only. All measurements are approximate and are for general guidance purposes only and whilst every care has been taken to ensure their accuracy, they should not be relied upon and potential buyers are advised to recheck the