



House - Semi-Detached (EPC Rating: E)

GROVE GARDEN, LONDON, NW4 4SA

Per Month

£3,250 Per

4 Bedroom House - Semi-Detached located in London

FOUR BEDROOM, TWO BATHROOM DETACHED HOUSE IN HENDON FINISHED TO A HIGH STANDARD - AVAILABLE NOW - TWO BATHROOMS - GARAGE INCLUDED.

Property Features:

- Four generously sized bedrooms
- Two modern bathrooms (including a newly refurbished main bathroom with a luxurious power shower)
- Spacious through-lounge with ample natural light
- Recently updated kitchen with brand-new gas cooker
- Triple-glazed windows throughout for enhanced comfort and energy efficiency
- Garage and off-street parking available

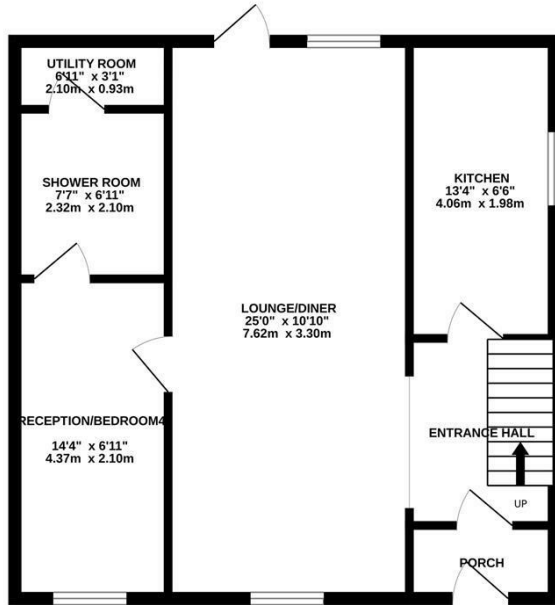
Location Highlights:

- Situated just a short walk from Hendon Central Underground Station (Northern Line), offering excellent transport links to Central London
- Convenient access to major road networks including the A41 and M1
- Regular bus services nearby, including the 113 bus to Central London
- Brent Cross Shopping Centre is approximately 10 minutes away

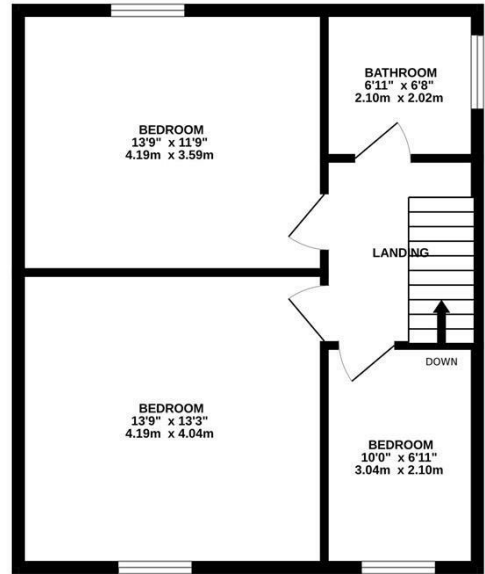


WATFORD LETTINGS | 12 MARKET STREET, WATFORD, HERTFORDSHIRE, WD18 0PD

GROUND FLOOR
606 sq.ft. (56.3 sq.m.) approx.



1ST FLOOR
516 sq.ft. (47.9 sq.m.) approx.



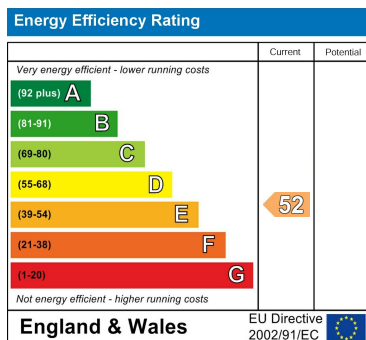
TOTAL FLOOR AREA : 1121 sq.ft. (104.2 sq.m.) approx.

Whilst every attempt has been made to ensure the accuracy of the floorplan contained here, measurements of doors, windows, rooms and any other items are approximate and no responsibility is taken for any error, omission or mis-statement. This plan is for illustrative purposes only and should be used as such by any prospective purchaser. The services, systems and appliances shown have not been tested and no guarantee as to their operability or efficiency can be given.
Made with Metropix ©2025

Council Tax Band

E

Energy Performance Graph



Call us on

01923 220 012

enquiries@warrenanthony.co.uk

www.warrenanthony.co.uk

Agents Note: Whilst every care has been taken to prepare these particulars, they are for guidance purposes only. All measurements are approximate and are for general guidance purposes only and whilst every care has been taken to ensure their accuracy, they should not be relied upon and potential buyers are advised to recheck the